

Sop. Reeds 1

Trumpets 1

TBone 1

Guitar

Piano

Bass

Drums

The score is written on a grand staff with multiple systems. The first four measures (measures 1-4) feature a sustained, wavy line in the upper staves (Sop. Reeds 1, Trumpets 1, and TBone 1). From measure 5 onwards, the instruments play specific melodic and harmonic parts. The Soprano Reeds 1 part includes triplet markings. The Trumpets 1 part features a series of notes with stems pointing down. The TBone 1 part has notes with stems pointing down and some circled notes in measures 5-8. The Guitar part shows chord changes: Cm9, D9#11, Cm9, B13, Cm9, Db7#11, Cm9, B13. The Piano part has some notes in measures 5 and 7. The Bass part is mostly empty. The Drums part has a pattern of strokes in measures 1-4, with circled numbers 1 through 8 below the staff.

S1-20-81



① — ② — ③ — ④ — ⑤ — ⑥ — ⑦ — ⑧

A

Sop Reeds 1

2

3

4

5

Trumpets 1

2

3

4

TBone 1

2

3

4

Guitar

Cm₆ Db₇^{#11} Cm₆ D₁₃ Cm₆ Db₇^{#11} Cm₆ B₁₃

Piano

Bass

Drums

51-20-81

LES DAVIS MUSIC PAPER CHICAGO

9

10

11

12

13

14

15

16

Sop Reeds 1

Alts 2

3

4

5

Trumpets 1

2

3

4

TBone 1

2

3

4

Guitar

Piano

Bass

Drums

col Sop ↑ P5

col Sop

col Sop

col Sop ↑ P5

col sop

Bbm7

Dbm7

Em7 A7

Dm7 G7

Em

A7

G7

AM

9

10

11

12

5

6

1

2

9

10

11

12

17

18

19

20

21

22

23

24

S1-20-81





Reeds

1 13 14 15 16 17 18 19 20

2 *col Alto*

3 *col Ten I*

4 *col Ten II*

5 *col Baritone*

Trumpets

1 5 6 7 8 *col Sop* 17 18 19 20

2

3

4

T'Bone

1 1 2 3 4

2

3

4

Guitar

Piano { 13 14 15 16 17 18 19 20

Bass

Drums

Reeds 1
2
3
4
5

Trumpets 1
2
3
4

TBone 1
2
3
4

Guitar

Piano {

Bass

Drums

Handwritten musical score for a jazz ensemble. The score is organized into systems for different instruments:

- Reeds:** Flutes (1-5) and Clarinets (1-4). Each staff contains handwritten notes with stems and beams, often grouped with slurs.
- Trumpets:** Four staves (1-4) with handwritten notes and stems.
- TBones:** Four staves (1-4) with handwritten notes. Some staves have "8va" written above them.
- Guitar:** A single staff with chord symbols: Cm⁹, Db⁷#11, Dm⁶, Eb⁷#11, Em⁶, F⁷#11, F#m⁶, G⁷b9.
- Piano:** A grand staff with vertical dots indicating a piano accompaniment.
- Bass:** A single staff.
- Drums:** A single staff.

The score is divided into four measures by vertical bar lines. The notation is dense and characteristic of a working draft for a jazz recording.

E1 Open Solos

Reeds 1

2

3

4

5

Trumpets 1

2

3

4

T'Bone 1

2

3

4

Guitar

Piano

Bass

Drums

Handwritten notes and markings on the score:

- A large diagonal slash is drawn across the Trumpets 1 and T'Bone 1 staves.
- The number "12" is written in the center of the score.
- The letters "AS" are written in the center of the score.
- A square box is drawn around the "AS" text.
- Small diagonal slashes are present at the beginning and end of the Trumpets 1 and T'Bone 1 staves.

Sop Reeds 1

2

3

4

5

Trumpets 1

2

3

4

TBone 1

2

3

4

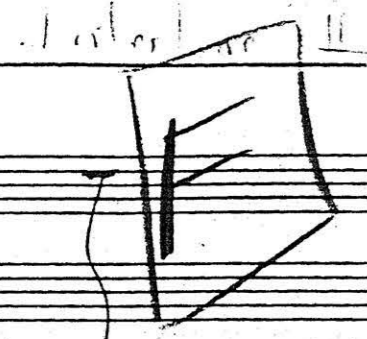
Guitar

Piano

Bass

Drums

S1-20-81



On Cue

Main musical score area containing staves for Sop Reeds 1-5, Trumpets 1-4, TBone 1-4, Guitar, Piano, Bass, and Drums. Includes handwritten notes, musical notation, and chord symbols.

Chord symbols: Ab7, A7bs, D7b9, G7#5, C13, C#7bs, F#7b9, B7#5, Eb7, F7bs, Bbb7, Eb#5, D13, A7bs, D7b9, G#5

(A) (B) (C) (D) (E) (F) (G) (H)

G Open Solos

Reeds 1

2

3

4

5

Trumpets 1

2

3

4

TBone 1

2

3

4

Guitar

Piano

Bass

Drums

12

AS



Title

Reeds 1

2

3

4

5

Trumpets 1

2

3

4

TBone 1

2

3

4

Guitar

Piano

Bass

Drums

FINE