


GIUITAR

LIONEL HAMPTON

CALIFORNIA HERE I COME

arr. by FRANK COMU

A (IN 2)
Eb Eb7 Ab Fmi




Bb7 Cm7 C#o Bb7/D Eb



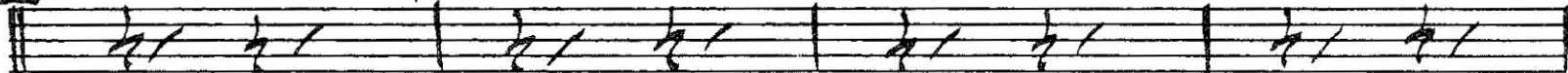
B Eb/G Gbo Bb7/F Bb7




Eb/G Gbo Bb7/F Bb7



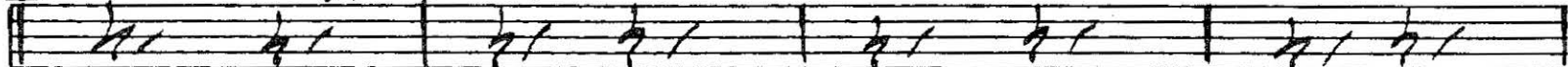
C Eb Eb7 Ab Fmi




Bb7 Cm7 C#o Bb7/D Eb



D Fmi C7/Eb Fm7/Eb Fm7/C G7 Cmi



F7 Fm7/Bb Bb9 (IN 4) HALF TIME (ROCK BEAT) Eb



E *Ab9*
~~*Eb7*~~ ~~*Eb9*~~ *Ab9* *Bb9* *Bb9+5* *Eb6*

SIMILE ROCK BEAT

Eb/G *Gbo* *Bb7/f* *Bb7* *Eb/G* *Gbo* *Bb7/f* *Bb7*

F *Eb7* *Eb9+5* *Ab9* *Bb9* *Bb9+5* *Eb6*

F7 *Fm7/bbBb9* *Eb* *Eb13*

(ROCK)

G *Ab7* *Ab7+* *Db7* *Eb7* *Eb7+* *Ab6*

(ROCK) SIMILE ROCK

Ab/c *Bo* *Eb7/bb* *Eb9* *Ab/c* *Bo* *Eb7/bb* *Eb9*

H *Ab13* *D9+11* *Db13* *Do* *Eb13* *A9+11* *Ab13* *Ao*

(ROCK)

Bbm7 *Ao* *Bbm7/bb* *Gb9* *Ab6* *C9/G* *Fm7* *Bb9* *Bbm7/Eb* *Eb9*

Ab6 *A9+11* *Ab13*

PIANO

LIONEL HAMPTON

CALIFORNIA HERE I COME

arr. by FRANK COMU

A (IN 2) Eb Eb7 Ab Fmi

Bb7 Cm7 C#0 Bb7/D Eb

B Eb/G Gb0 Bb7/F Bb7

Eb/G Gb0 Bb7/F Bb7

C Eb Eb7 Ab Fmi

Bb7 Cm7 C#0 Bb7/D Eb

D Fmi C7/Eb Fm7/Eb Fm7/C G7 Cmi

F7 Fm7/Bb Bb9 (IN 4) HALF TIME (ROCK BEAT) Eb

E Eb7 Eb9+ Ab9 Bb9 Bb9+5 Eb6

SIMILE ROCK BEAT

Eb/c Gb0 Bb7/f Bb7 Eb/c Gb0 Bb7/f Bb7

F Eb7 Eb9+5 Ab9 Bb9 Bb9+5 Eb6

F7 (ROCK) Fm7/bb Bb9 Eb Eb13

G Ab7 Ab7+ Db7 Eb7 Eb7+ Ab6

(ROCK) SIMILE ROCK

Ab/c B0 Eb7/bb Eb9 Ab/c B0 Eb7/bb Eb9

H Ab13 D9+11 Db13 D0 Eb13 A9+11 Ab13 A0

(ROCK)

Bbm7 A0 Bbm7/bb Gb9 Ab6 C9/6 Fm7 Bb9 Bbm7/Eb Eb9

Ab6 A9+11 Ab13

ALTO SAX - I

LIONEL HAMPTON

CALIFORNIA HERE I COME

arr. by FRANK COMD

A (IN 2)

f

B

C

D

(IN 4) HALFTIME (ROCK BEAT) *Long meter*

E

Handwritten musical score for guitar, consisting of eight staves. The first staff begins with a treble clef, a 4/4 time signature, and a dynamic marking of *mf*. The music is written in a key with one sharp (F#) and a 4/4 time signature. The score includes various rhythmic patterns, including eighth and sixteenth notes, and rests. Chord markings are present: 'F' in a box on the second staff, 'G' in a box on the third staff, and 'A' in a box on the fifth staff. The piece concludes with a double bar line on the eighth staff.

Segue to Vamp

I got Rhythm

ALTO SAX - 2

LIONEL HAMPTON

CALIFORNIA HERE I COME

arr. by FRANK COMD

A (IN 2)

f

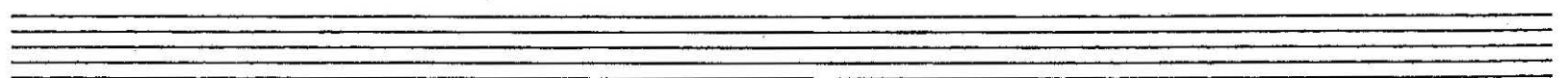
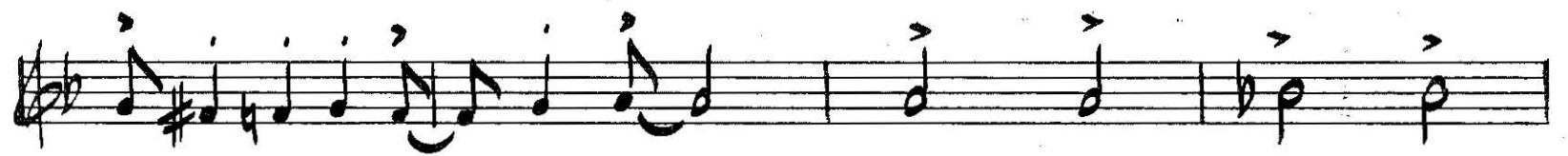
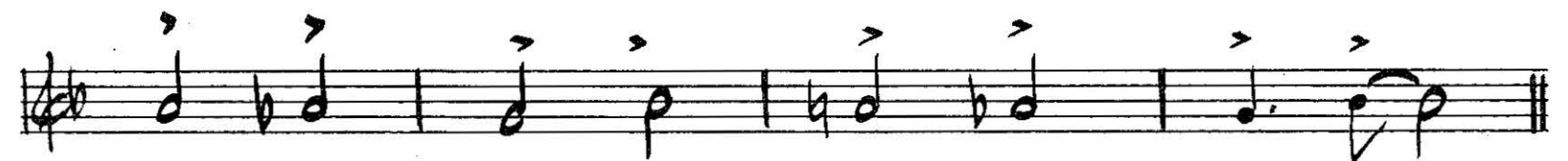
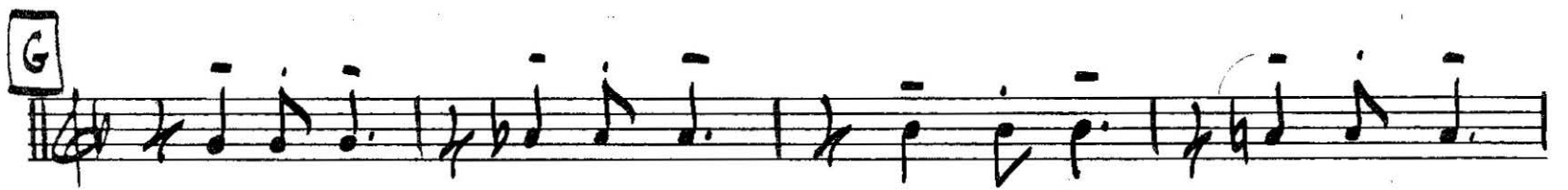
B

C

D

(IN 4) HALFTIME (ROCK BEAT)

E



Handwritten musical notation on a single staff, starting with a treble clef and a dynamic marking 'mf'. The notation consists of a series of eighth and sixteenth notes, some beamed together, with slurs and accents.

Handwritten musical notation on a single staff, featuring a boxed 'F' chord symbol. The notation includes eighth notes with accents and slurs.

Handwritten musical notation on a single staff, continuing the melodic line with eighth notes and slurs.

Handwritten musical notation on a single staff, starting with a boxed 'G' chord symbol. The notation features quarter notes with accents.

Handwritten musical notation on a single staff, featuring eighth notes and slurs.

Handwritten musical notation on a single staff, starting with a boxed 'H' chord symbol. The notation includes eighth notes with various accidentals and slurs.

Handwritten musical notation on a single staff, continuing the melodic line with eighth notes and slurs.

Handwritten musical notation on a single staff, concluding the piece with eighth notes and slurs.

BARI SAX - 5

LIONEL HAMPTON

CALIFORNIA HERE I COME

arr. by FRANK COMO

A (IN 2)

Handwritten musical notation for section A, measures 1-4. It consists of two staves. The first staff starts with a dynamic marking 'f' and contains quarter notes with accents. The second staff continues the melody with quarter notes and a half note.

B

Handwritten musical notation for section B, measures 5-6. It consists of two staves. The first staff has a whole rest followed by a half note. The second staff continues with a half note and a long slur over the final two notes.

C

Handwritten musical notation for section C, measures 7-8. It consists of two staves. The first staff has a quarter note, a whole rest, and a triplet of quarter notes. The second staff continues with quarter notes and a half note.

D

Handwritten musical notation for section D, measures 9-10. It consists of two staves. The first staff contains quarter notes with accents. The second staff continues with quarter notes and a half note.

(IN 4) HALFTIME (ROCK BEAT)

Handwritten musical notation for section D continuation, measures 11-12. It consists of two staves. The first staff has quarter notes with accents. The second staff has a half note followed by a whole rest.

E Slow

Handwritten musical notation for section E, measures 13-14. It consists of two staves. The first staff has quarter notes with accents. The second staff continues with quarter notes and a half note.

TENOR SAX - 3

LIONEL HAMPTON

CALIFORNIA HERE I COME

arr. by FRANK CONRO

A (IN 2) *f*

B

C

D

(IN 4) HALFTIME (ROCK BEAT)

E

Handwritten musical score on ten staves. The notation includes treble clefs, a key signature of one flat (B-flat), and a 4/4 time signature. The music features various rhythmic patterns, including eighth and sixteenth notes, and rests. Chord symbols 'F' and 'G' are written in boxes above the second and third staves respectively. The final staff ends with a double bar line.

Step
to
Vamp

TENOR SAX - 4

LIONEL HAMPTON

CALIFORNIA HERE I COME

arr. by FRANK CONRO

A (IN 2)

Musical notation for section A, measures 1-4. Treble clef, 2/4 time signature. Notes: G4, A4, B4, C5, B4, A4, G4, F4. Accents are present on all notes.

B

Musical notation for section B, measures 1-2. Bass clef, 2/4 time signature. Notes: G2, F2, E2, D2. Accents are present on all notes.

C

Musical notation for section C, measures 1-4. Bass clef, 2/4 time signature. Notes: G2, F2, E2, D2, C2, B1, A1, G1. A triplet of G2, F2, E2 is indicated with a '3' above it. Accents are present on all notes.

D

Musical notation for section D, measures 1-4. Bass clef, 2/4 time signature. Notes: G2, F2, E2, D2, C2, B1, A1, G1. Accents are present on all notes.

(IN 4) HALFTIME (ROCK BEAT)

Musical notation for section D continuation, measures 1-2. Bass clef, 4/4 time signature. Notes: G2, F2, E2, D2. Accents are present on all notes.

E

Musical notation for section E, measures 1-4. Bass clef, 4/4 time signature. Notes: G2, F2, E2, D2, C2, B1, A1, G1. Accents are present on all notes.

Handwritten musical score on ten staves. The first staff has a treble clef and a key signature of one sharp (F#). The second staff has a treble clef and a key signature of one flat (Bb). The third staff has a treble clef and a key signature of one flat (Bb). The fourth staff has a treble clef and a key signature of one flat (Bb). The fifth staff has a treble clef and a key signature of one flat (Bb). The sixth staff has a treble clef and a key signature of one flat (Bb). The seventh staff has a treble clef and a key signature of one flat (Bb). The eighth staff has a treble clef and a key signature of one flat (Bb). The ninth staff has a treble clef and a key signature of one flat (Bb). The tenth staff has a treble clef and a key signature of one flat (Bb). The score includes various musical notations such as notes, rests, and accidentals. Chord symbols F, G, and A are written in boxes above the second, fourth, and sixth staves respectively. The piece concludes with a double bar line on the eighth staff.

Two sets of empty musical staves, each consisting of five lines.

TROMBONE - I

LIONEL HAMPTON

CALIFORNIA HERE I COME

arr. by FRANK COMU

A (IN 2) *f*

B

C (UNIS. SOLI) *f*

D (TUTTI)

E

F

G

(1ST & 2ND SVA) ----- (1ST & 2ND SVA)

H (loco)

TROMBONE - 2

LIONEL HAMPTON

CALIFORNIA HERE I COME

arr. by FRANK CONRU

A (IN 2)

f

gliss

B

gliss

(b)

C (unis. soli)

f

D (tutti)

(IN 4) HALFTIME (ROCK BEAT)
Half notes and 2 drums

E

f

mf *f* *mf*

F

f

f

G

(1ST & 2ND SVA) (1ST & 2ND SVA)

H (loco)

f

f

f **BB**

TROMBONE-3

LIONEL HAMPTON

CALIFORNIA HERE I COME

arr. by FRANK CORBU

A (IN 2)

Musical notation for section A, measures 1-4. The first staff is in 2/4 time with a key signature of one flat (Bb). It begins with a dynamic marking of *f*. The notes are: G2 (quarter), G2 (quarter), A2 (quarter), A2 (quarter), Bb2 (quarter), Bb2 (quarter), C3 (quarter), C3 (quarter). The second staff continues with: D3 (quarter), D3 (quarter), Eb3 (quarter), Eb3 (quarter), E3 (quarter), E3 (quarter), F3 (quarter), F3 (quarter), ending with a glissando on F3.

Musical notation for section B, measures 5-8. The notes are: G2 (quarter), G2 (quarter), Ab2 (quarter), Ab2 (quarter), Bb2 (quarter), Bb2 (quarter), C3 (quarter), C3 (quarter), ending with a glissando on C3.

Musical notation for section C, measures 9-12. The first staff is marked *(unis. soli)* and starts with a dynamic marking of *f*. The notes are: G2 (quarter), G2 (quarter), Ab2 (quarter), Ab2 (quarter), Bb2 (quarter), Bb2 (quarter), C3 (quarter), C3 (quarter). The second staff continues with: D3 (quarter), D3 (quarter), Eb3 (quarter), Eb3 (quarter), E3 (quarter), E3 (quarter), F3 (quarter), F3 (quarter).

Musical notation for section D, measures 13-16. The first staff is marked *(tutti)*. The notes are: G2 (quarter), G2 (quarter), Ab2 (quarter), Ab2 (quarter), Bb2 (quarter), Bb2 (quarter), C3 (quarter), C3 (quarter). The second staff continues with: D3 (quarter), D3 (quarter), Eb3 (quarter), Eb3 (quarter), E3 (quarter), E3 (quarter), F3 (quarter), F3 (quarter). The final measure is marked *(IN 4) HALFTIME (ROCK BEAT)* and contains a half note G2.

E

f *mf* *f* *mf*

F

f *mf*

G

f *mf*

H (Loco)

f *mf*

I

f *mf*

TRUMPET - I

LIONEL HAMPTON

CALIFORNIA HERE I COME

arr. by FRANK CONRO

A (IN 2)

f

||

B

||

||

C

2 3

D

||

(IN 4) HALFTIME (ROCK BEAT)

||

E

f

Handwritten musical notation on a single staff, including a treble clef, a key signature of one flat, and a 4/4 time signature. The notation includes a whole rest followed by a half note chord consisting of F4 and C5.

Handwritten musical notation on a single staff, starting with a boxed letter 'F' in the margin. The notation includes a treble clef, a key signature of one flat, and a 4/4 time signature. It features a sequence of eighth notes: F4, G4, A4, B4, C5, B4, A4, G4, F4.

Handwritten musical notation on a single staff, continuing the sequence of eighth notes from the previous staff: F4, G4, A4, B4, C5, B4, A4, G4, F4.

Handwritten musical notation on a single staff, starting with a boxed letter 'G' in the margin. The notation includes a treble clef, a key signature of one flat, and a 4/4 time signature. It features a sequence of eighth notes: G4, A4, B4, C5, B4, A4, G4, F4.

(1ST & 2ND SVA)

Handwritten musical notation on a single staff, including a treble clef, a key signature of one flat, and a 4/4 time signature. It features a sequence of eighth notes: G4, A4, B4, C5, B4, A4, G4, F4. A bracket labeled '(Locol)' spans the final two notes.

Handwritten musical notation on a single staff, starting with a boxed letter 'H' in the margin. The notation includes a treble clef, a key signature of one flat, and a 4/4 time signature. It features a sequence of eighth notes: H4, G4, F4, E4, D4, C4, B3, A3.

Handwritten musical notation on a single staff, continuing the sequence of eighth notes from the previous staff: H4, G4, F4, E4, D4, C4, B3, A3.

(1ST & 2ND SVA)

Handwritten musical notation on a single staff, including a treble clef, a key signature of one flat, and a 4/4 time signature. It features a sequence of eighth notes: H4, G4, F4, E4, D4, C4, B3, A3. A sharp sign (#) is written below the staff.

TRUMPET - 3

LIONEL HAMPTON

CALIFORNIA HERE I COME

arr. by FRANK CONRO

A (IN 2)

Handwritten musical notation for section A, first line. It starts with a treble clef, a key signature of two flats (Bb, Eb), and a 2/4 time signature. The notes are: G4 (quarter), A4 (quarter), Bb4 (quarter), C5 (quarter), Bb4 (quarter), A4 (quarter), G4 (quarter), F4 (quarter), E4 (half). There are accents over the first six notes. A dynamic marking 'f' is written below the first note.

Handwritten musical notation for section A, second line. The notes are: D4 (quarter), C4 (quarter), Bb4 (quarter), Ab4 (quarter), G4 (quarter), F4 (quarter), E4 (half). There are accents over all notes.

Handwritten musical notation for section B, first line. It starts with a treble clef, a key signature of two flats, and a 4/4 time signature. The notes are: G4 (quarter), A4 (quarter), Bb4 (quarter), C5 (quarter), Bb4 (quarter), A4 (quarter), G4 (quarter), F4 (quarter), E4 (half). There are accents over all notes.

Handwritten musical notation for section B, second line. The notes are: D4 (quarter), C4 (quarter), Bb4 (quarter), Ab4 (quarter), G4 (quarter), F4 (quarter), E4 (half). There are accents over all notes.

Handwritten musical notation for section C. It starts with a treble clef, a key signature of two flats, and a 4/4 time signature. The notes are: G4 (quarter), A4 (quarter), Bb4 (quarter), C5 (quarter), Bb4 (quarter), A4 (quarter), G4 (quarter), F4 (quarter), E4 (half). There are accents over all notes. Above the staff, there are markings '2' and '3' above the second and third measures respectively.

Handwritten musical notation for section D, first line. It starts with a treble clef, a key signature of two flats, and a 4/4 time signature. The notes are: G4 (quarter), A4 (quarter), Bb4 (quarter), C5 (quarter), Bb4 (quarter), A4 (quarter), G4 (quarter), F4 (quarter), E4 (half). There are accents over all notes. A box labeled 'D' is above the second measure.

(IN 4) HALF TIME (ROCK BEAT)

Handwritten musical notation for section D, second line. The notes are: D4 (quarter), C4 (quarter), Bb4 (quarter), Ab4 (quarter), G4 (quarter), F4 (quarter), E4 (half). There are accents over all notes.

Handwritten musical notation for section E. It starts with a treble clef, a key signature of two flats, and a 4/4 time signature. The notes are: G4 (quarter), A4 (quarter), Bb4 (quarter), C5 (quarter), Bb4 (quarter), A4 (quarter), G4 (quarter), F4 (quarter), E4 (half). There are accents over all notes. A dynamic marking 'f' is written below the first note.

2

Musical staff with treble clef, key signature of two flats, and a fermata over a whole note.

Musical staff with treble clef, key signature of two flats, starting with a box labeled 'F' and a dynamic marking 'f'.

Musical staff with treble clef, key signature of two flats, continuing the melodic line.

Musical staff with treble clef, key signature of two flats, starting with a box labeled 'G' and a dynamic marking 'vms.'

Musical staff with treble clef, key signature of two flats, featuring a bracketed annotation '(1ST & 2ND SVA)' and a dynamic marking '(Local)'.

Musical staff with treble clef, key signature of two flats, starting with a box labeled 'H'.

Musical staff with treble clef, key signature of two flats, continuing the melodic line.

Musical staff with treble clef, key signature of two flats, featuring a bracketed annotation '(1ST & 2ND SVA)' and a dynamic marking 'f'.

Empty musical staff.

Empty musical staff.

TRUMPET-4

LIONEL HAMPTON

CALIFORNIA HERE I COME

arr. by FRANK COMO

A (IN 2)

Musical notation for section A, measures 1-4. Treble clef, key signature of two flats, 2/4 time signature. Dynamics include 'f'.

B

Musical notation for section B, measures 5-8. Treble clef, key signature of two flats, 2/4 time signature.

C

Musical notation for section C, measures 9-10. Treble clef, key signature of two flats, 2/4 time signature. Includes measure rests and accents.

D

Musical notation for section D, measures 11-14. Treble clef, key signature of two flats, 2/4 time signature.

(IN 4) HALFTIME (ROCK BEAT)

Musical notation for section D continuation, measures 15-16. Treble clef, key signature of two flats, 4/4 time signature.

E

Musical notation for section E, measures 17-20. Treble clef, key signature of two flats, 2/4 time signature. Dynamics include 'f'.

2

Musical staff with treble clef, key signature of two flats, and a whole rest followed by a quarter rest and two eighth notes.

F

Musical staff with treble clef, key signature of two flats, and a forte (f) dynamic marking. The staff contains a sequence of eighth and quarter notes.

Musical staff with treble clef, key signature of two flats, and a sequence of eighth and quarter notes.

G *unss.*

Musical staff with treble clef, key signature of two flats, and a sequence of eighth and quarter notes with slurs.

(1ST & 2ND SVA)

Musical staff with treble clef, key signature of two flats, and a sequence of eighth and quarter notes with slurs.

H

Musical staff with treble clef, key signature of two flats, and a sequence of eighth and quarter notes with slurs.

Musical staff with treble clef, key signature of two flats, and a sequence of eighth and quarter notes with slurs.

(1ST & 2ND SVA)

Musical staff with treble clef, key signature of two flats, and a sequence of eighth and quarter notes with slurs.

Two empty musical staves.