

California Here I Come

A

Reeds

b5
b5

Handwritten musical notation for the Reeds section. It consists of five staves. The top staff contains a melodic line with eighth and sixteenth notes, some beamed together. The lower staves contain rhythmic accompaniment with plus signs and some notes. There are various markings such as slurs and accents throughout the piece.

Trumpets

Handwritten musical notation for the Trumpets section. It consists of two staves. The top staff has a melodic line with quarter and eighth notes. The bottom staff has a rhythmic accompaniment with plus signs and some notes.

Trombones

Handwritten musical notation for the Trombones section. It consists of two staves. The top staff has a melodic line with quarter and eighth notes. The bottom staff has a rhythmic accompaniment with plus signs and some notes.

Guitar

Handwritten musical notation for the Guitar section. It consists of two staves. The top staff has a melodic line with quarter and eighth notes. The bottom staff has a rhythmic accompaniment with plus signs and some notes.

Piano

Handwritten musical notation for the Piano section. It consists of two staves. The top staff contains a series of chords: E^b, G⁺, A^b, B^b7, A^b/C, D-G, B^b7/D, and E^b.

Bass

An empty musical staff for the Bass section.

Drums

An empty musical staff for the Drums section.



Reeds

Handwritten musical notation for Reeds, consisting of four staves. The notation includes various notes, rests, and articulation marks such as slurs and accents.

Trumpets

Handwritten musical notation for Trumpets, consisting of two staves. The notation includes notes, rests, and slurs.

Trombones

Handwritten musical notation for Trombones, consisting of two staves. The notation includes notes, rests, and slurs.

Guirar

Handwritten musical notation for Guirar, consisting of a single staff with notes and rests.

Piano

Handwritten musical notation for Piano, consisting of a single staff with chord symbols: E^b/G , G^b , F^b/A , B^7 , E^b/G , G^b , B^7/F , and B^7 .

Bass

Empty musical staff for Bass.

Drums

Empty musical staff for Drums.



B

12

Reeds

Musical notation for the Reeds section, featuring a staff with various notes, rests, and articulation marks.

Trumpets

Musical notation for the Trumpets section, featuring a staff with notes and rests.

Trombones

Musical notation for the Trombones section, featuring a staff with notes and rests.

Guitar

Musical notation for the Guitar section, featuring a staff with notes and rests.

Piano

Musical notation for the Piano section, featuring a staff with notes and rests.

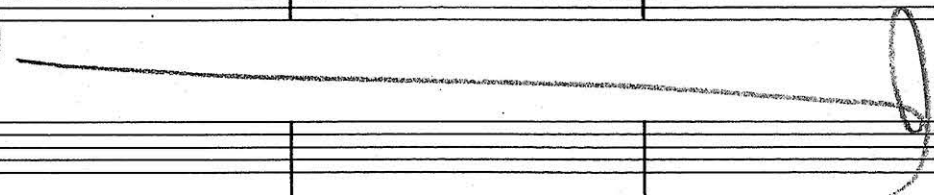
Bass

Musical notation for the Bass section, featuring a staff with notes and rests.

Drums

Musical notation for the Drums section, featuring a staff with notes and rests.

2011 (A)





Reeds

Musical notation for the Reeds section, consisting of four staves. The notation includes various note values, rests, and accidentals across eight measures.

Trumpets

Musical notation for the Trumpets section, consisting of two staves. The notation includes notes, rests, and accidentals across eight measures.

Trombones

Musical notation for the Trombones section, consisting of two staves. The notation includes notes, rests, and accidentals across eight measures.

Guitar

Musical notation for the Guitar section, consisting of two staves. The notation includes notes and rests across eight measures.

Piano

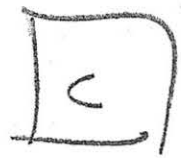
Piano chord notation for the piano part. The chords are: F, F#m, G7, C7/Bb, Eb7, and Eb7. Some chords are circled or crossed out.

Bass

Empty musical staff for the Bass section.

Drums

Empty musical staff for the Drums section.



Reeds

Trumpets

Trombones

Guitar

Piano

Bass

Drums

Reeds

Handwritten musical notation for the Reeds section. It consists of three staves: Clarinet (top), Saxophone (middle), and Bassoon (bottom). The notation includes various notes, rests, and articulation marks. A large slur covers the first three measures, and another slur covers the last three measures. There are some handwritten annotations and corrections throughout the score.

Trumpets

Handwritten musical notation for the Trumpets section. It consists of two staves. The notation includes various notes, rests, and articulation marks. There are some handwritten annotations and corrections throughout the score.

Trombones

Handwritten musical notation for the Trombones section. It consists of two staves. The notation includes various notes, rests, and articulation marks. There are some handwritten annotations and corrections throughout the score.

Guitar

An empty musical staff for the Guitar section.

Piano

Handwritten musical notation for the Piano section. It consists of two staves. The notation shows a series of chords: Eb, Gb0, F-, Bb7, Eb, Gb0, F-, and Bb7.

Bass

An empty musical staff for the Bass section.

Drums

An empty musical staff for the Drums section.

Reeds

Musical notation for the Reeds section, consisting of five staves. The notation includes various notes, rests, and dynamic markings such as *mf* and *f*. A circled 'C' is written above the first staff.

Trumpets

Musical notation for the Trumpets section, consisting of two staves. The notation includes notes, rests, and dynamic markings such as *mf* and *f*.

Trombones

Musical notation for the Trombones section, consisting of two staves. The notation includes notes, rests, and dynamic markings such as *mf* and *f*.

Guirar

An empty musical staff for the Guirar section.

Piano

An empty musical staff for the Piano section.

Bass

An empty musical staff for the Bass section.

Drums

An empty musical staff for the Drums section.



Reeds

Trumpets

Trombones

Guitar

Piano

Bass

Drums