

DON'T CRY MY HEART

"GEORGE"

EMILE CHARLAP
© 1972
LOCAL 802
REGISTERED

NO. M-2 10 STAVE
1595 B'WAY, N. Y.

MADE IN U. S. A.

DON'T CRY

"FRANK"

Handwritten musical notation for the first system on the left page. It begins with a treble clef and a key signature of one flat. The notation includes several measures with notes, rests, and dynamic markings. A circled 'H' is present in the fourth measure, and a circled '8' is in the sixth measure. There are also some scribbles and corrections in the notation.

Handwritten musical notation for the first system on the right page. It begins with a treble clef and a key signature of one flat. The notation includes several measures with notes, rests, and dynamic markings. A circled 'Rit' is present in the second measure. There are also some scribbles and corrections in the notation.

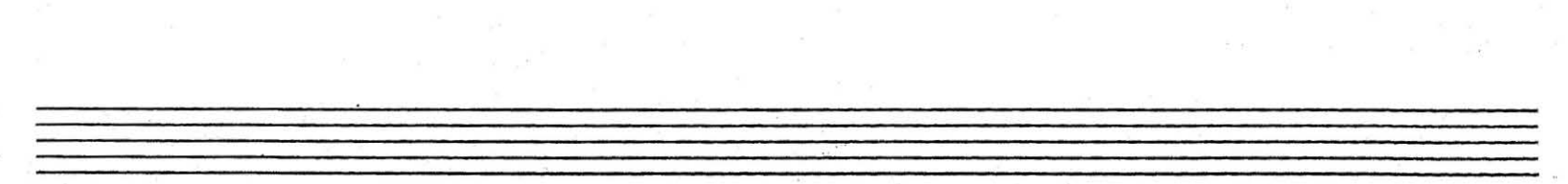
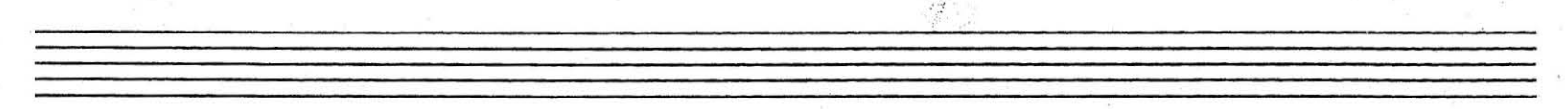
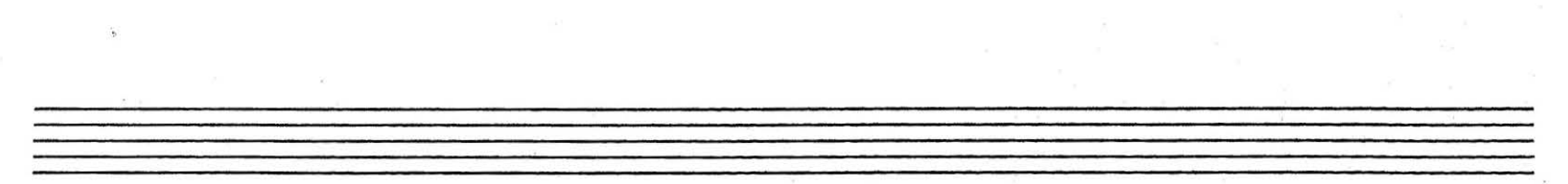
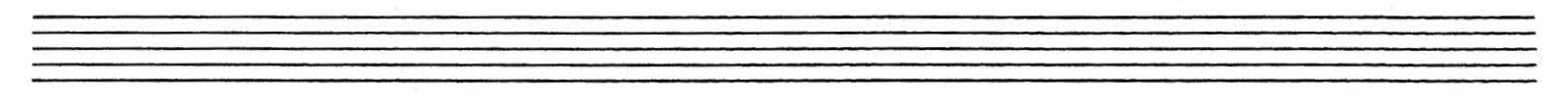
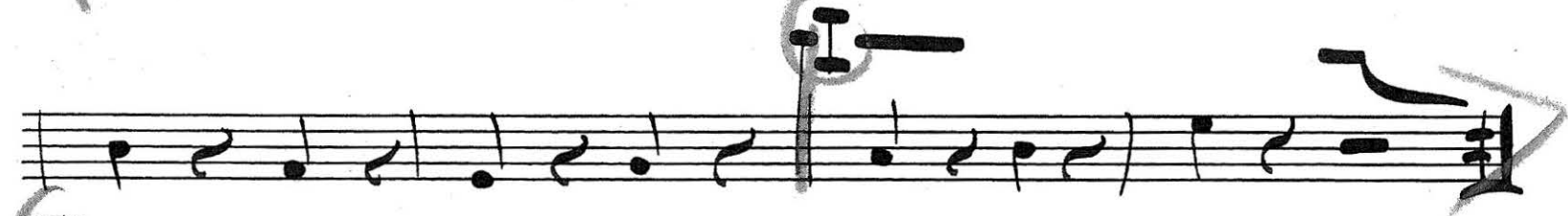
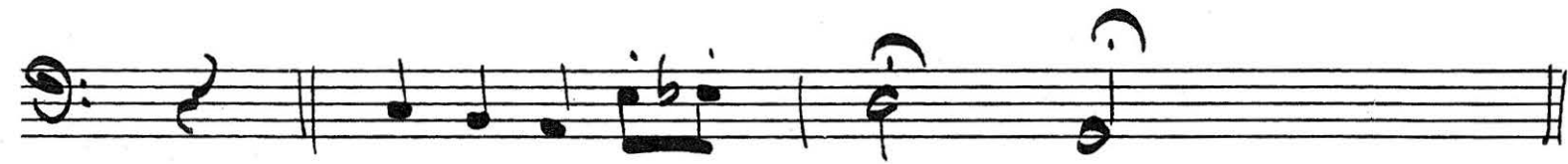
Five empty musical staves on the right page, arranged vertically. Each staff consists of five horizontal lines.

DON'T CRY

"DANNY"

DON'T CRY

"BASS"



— DON'T CRY —

"PIANO"

Handwritten musical notation for the piano part of "Don't Cry". The notation includes various chords and melodic lines across eight staves. The chords are: C, Am7, Em7, Ebm7, Dm7, G7, B7, D7, Am7, D7, Dm7, G7, C, Dm7, G7, Gm7, C7, B7, F, Fm, C, C7, F, Fm, C, Eb0, Dm7, G7, C, C7, B7, C, D7, Am7, D7, Dm7, G7, C, Dm7, G7, D7, C, B7, C.

Handwritten musical notation for the piano part of "Don't Cry". The notation includes various chords and melodic lines across six staves. The chords are: D7, Am7, D7, Dm7, G7, C7, Gm7, C7, E7, F, Fm, C, C7, F, Fm, C, Eb0, Dm7, F7, C, B7, C, D7, Db7, D7, Dm7, G7 (Rit.), Fm7, Em7, Dm7, Cm7. The notation ends with a signature.