



d. notestine

*First keep the peace within yourself,
then you can also bring peace to others.*

THOMAS A. KEMPIS 1380 - 1471

*With our love and best wishes
for a
Blessed Christmas Season*



Louise and Jim McClure
Ken and Sally McClure
Marilyn and Randy Roach
David McClure

“THE CAVENDISH METHODIST CHURCH”

CAVENDISH, IDAHO

The log church at Cavendish, while not particularly old in years, truly represents the pioneer spirit that settled and developed that portion of Idaho. The Cavendish Ladies Club, a non-denominational group, was instrumental in getting the church built in the late 1930's. They solicited small donations, held fund-raising suppers, etc., until they had sufficient resources to proceed. The logs were donated, and the men and women of the community cut them. They all pitched in and built the church by hand, with the aid of horses. The piano and pews were donated, and the bell came from an old church in Troy. The deed is in the name of the Cavendish Methodist Church.

Cavendish, a small town located in extreme western Clearwater County is in a beautiful setting of timber, ranching and farm land. It was first established as Snell's Mill in the early 1860's on the old trail to the Pierce mining area. In 1886, E. A. Snell established a post office and named it Cavendish after Cavendish, Vermont.

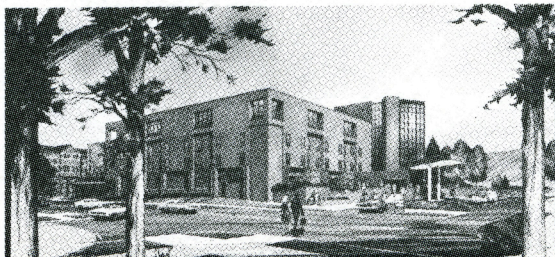


Created and Contributed by

DIANE McNIGHT NOTESTINE

Idaho Artist

Diane Notestine has been a resident of Boise for 12 years. Her paintings have been exhibited at the Art Mart in Boise, at the 1976 and 1977 sessions of the Idaho State Legislature and at various Boise banks.



LIMITED EDITION, for *St. Luke's Hospital Auxiliary to
benefit Mountain States Tumor Institute and
St. Luke's Hospital, Boise, Idaho.*