

What the stadium looks like with its portable gridiron in place (top) and with the "rug" rolled away from the permanent Tartan floor (below).

IDAHO'S DOMED MULTI-PURPOSE CENTER WITH A ROLL-UP FOOTBALL FIELD

A TYPICAL DAY IN THE LIFE OF THE UNIVERSITY OF IDAHO'S UNIQUE DOMED ACTIVITY CENTER...

At the near end, a college junior is practicing place-kicking, sending the pigskin in a long, lazy arc against an end-wall curtain 80 feet high.

In the center, eight exuberant students are playing a game of pick-up basketball.

At the far end, a group of coeds are concentrating on their matches on regulation tennis courts.

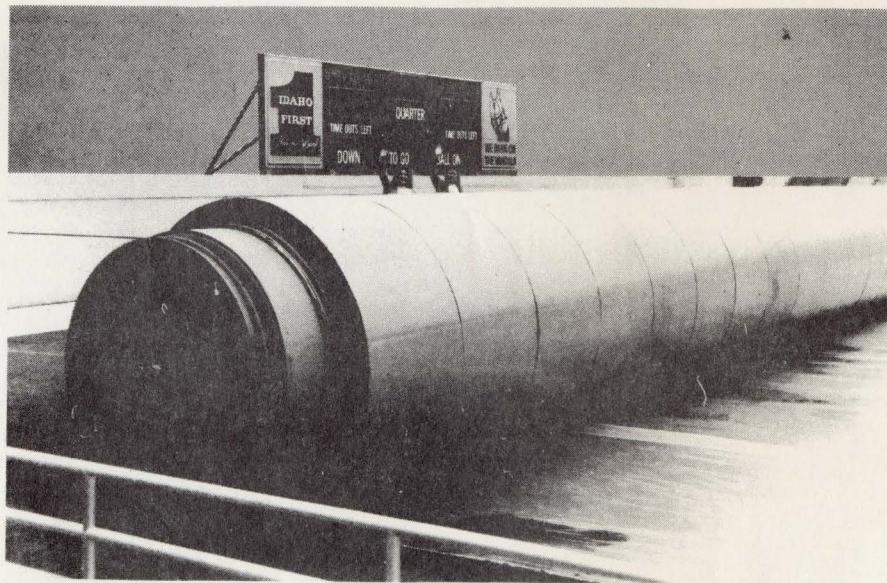
Meanwhile, around the perimeter, a lonely runner is jogging away the miles, while several maintenance men in one corner are setting up for the college commencement exercises only 48 hours away.

While all this is going on, a glowering Idaho sky is releasing tons of

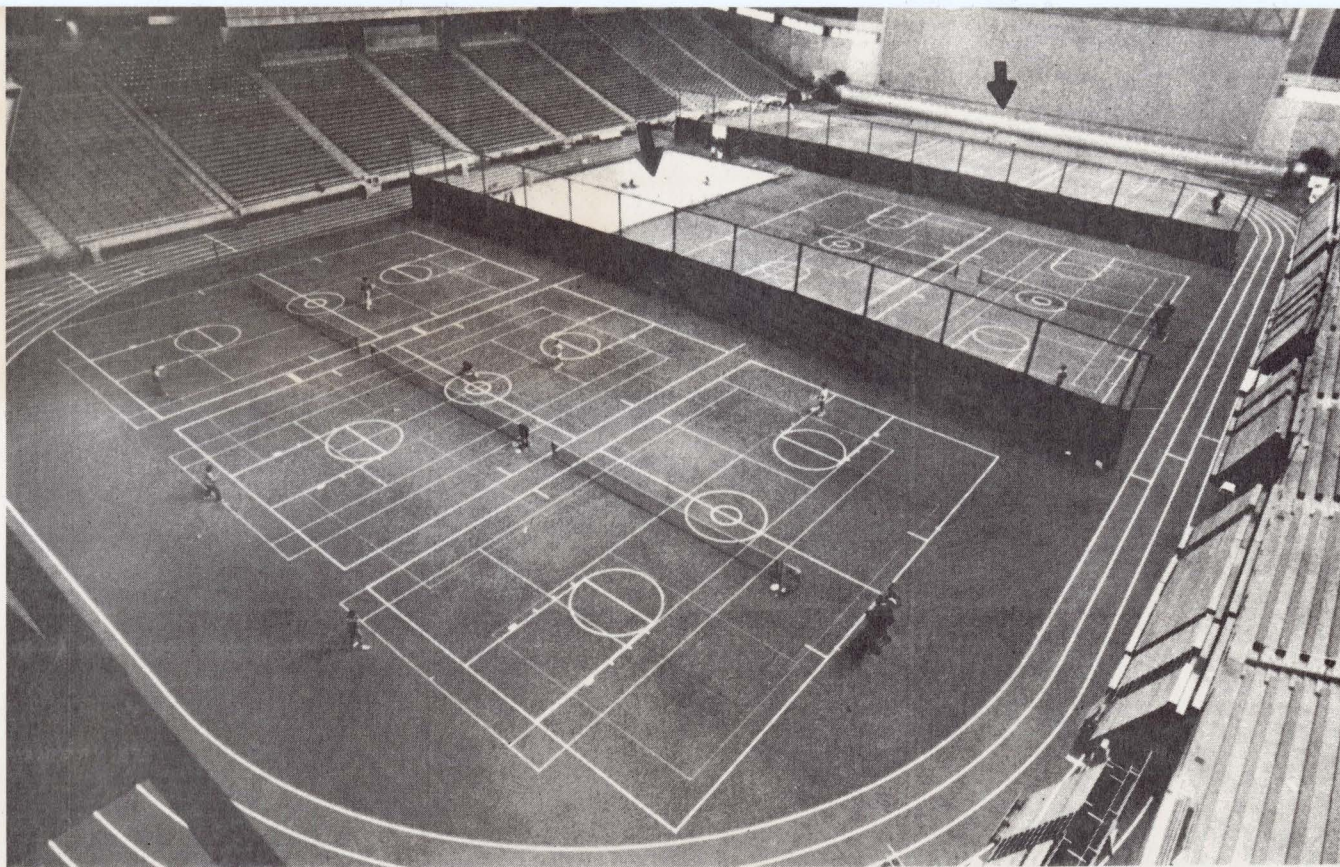
water, which, under ordinary conditions, would have brought all of the action to a halt. But this is the famed "Kibbie Dome" and anything—including football—can be played regardless of what's going on outdoors.

In 1976, this domed Activity Center, constructed at a cost of \$7,859,000, received the highest annual award bestowed by the 72,000-member American Society of Civil Engineers. It was named the "Nation's Outstanding Structural Engineering Achievement"—joining such celebrated award-winners as the St. Lawrence Seaway, the John F. Kennedy International Airport, the St. Louis Gateway Arch, and New York City's World Trade Center. That's pretty fast company!

During its first academic year after completion, UI's multi-purpose facility housed the regular home football games, two rock concerts, an invitational indoor track meet, a trade show, the regular home basketball games, physical education classes, a



This unique 200 x 370 foot "rug" is rolled out directly over the center area and rolled up afterward on a 210-foot long core of 10-gauge steel.



The Kibbe Dome ready for everything—basketball, tennis, volleyball, badminton, and track. Arrow at top shows where the rolled-up football “rug” goes. Arrow at side shows the court on which varsity basketball is played.

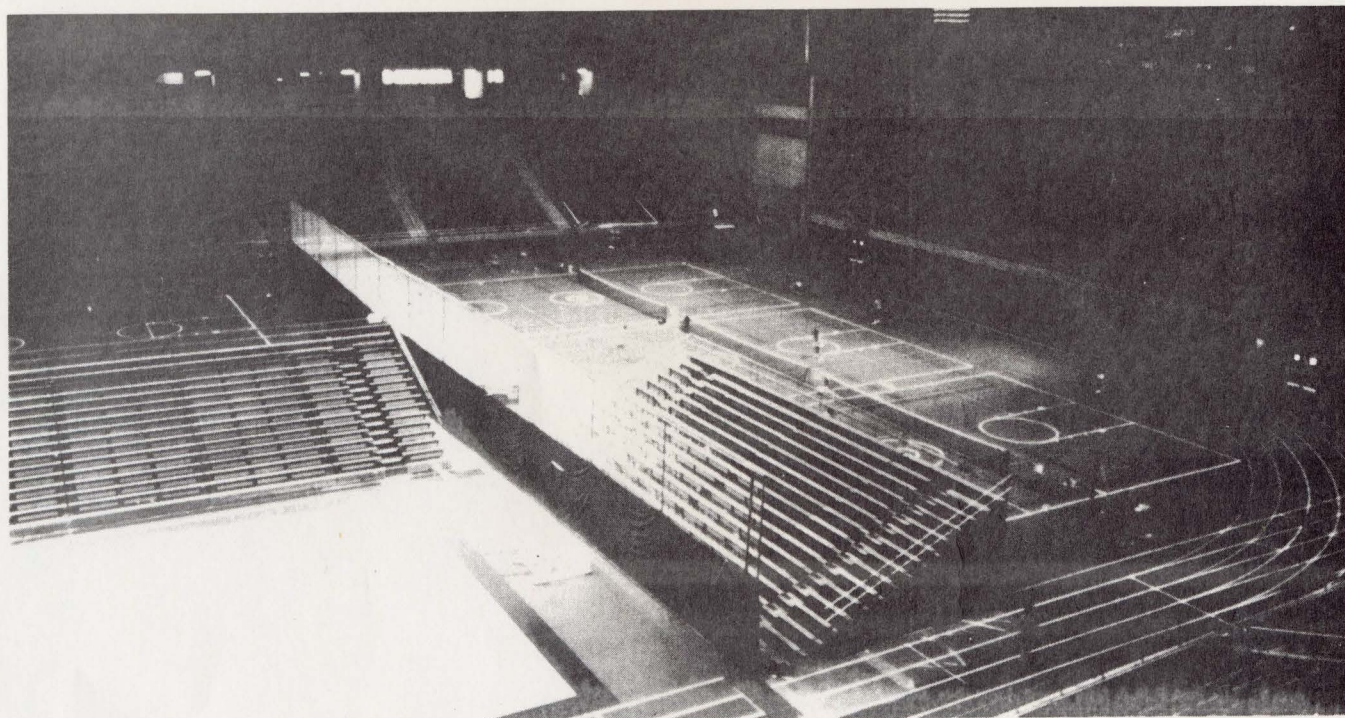
full slate of intramural athletics, general recreation, and commencement exercises.

A huge structure, 400 feet long and

400 feet wide, the Activity Center is covered with a unique 150-foot high, 400-foot span roof. What’s more, it is the U.S.’s only multi-purpose stadium

that has an artificial-turf football field that can be rolled up out of the way during the off-season!

(Continued on page 114)



With temporary bleachers around three sides, the stadium can seat 10,000 for basketball.

Originally, the turf rested on asphalt, but once the roof was put into place the asphalt base was covered with a resilient, durable "Tartan" surface suitable for track, tennis, volleyball, p.e. classes, and non-athletic activities.

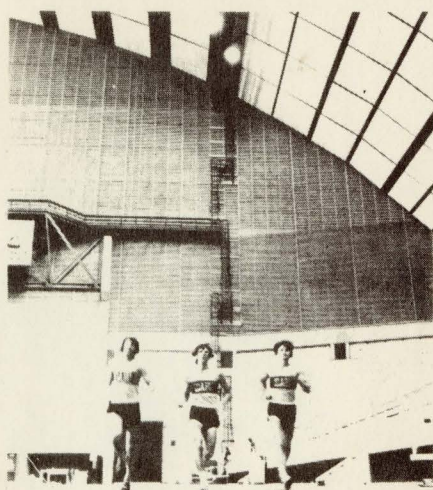
Football field: This unique 200 x 370 feet unitized piece of turf provides a surface for football, soccer, baseball and other sports normally played on grass. It is rolled out directly over the center area and rolled up afterward on a 210-foot long core of 10-gauge steel eight feet in diameter.

Rolled up, the turf is stored (on its core) against an end-zone wall beneath two electric winches bolted about 12 feet off the ground and 210 feet apart.

The normal seating capacity for football is 17,651. Temporary ground level stands provide 3,349 additional seats, increasing the capacity to 21,000.

The varsity basketball court is located in front of the reserved seat section of the grandstand. When the portable stands are rolled into place around the three other sides of the court, the area provides seating for 10,000 spectators.

The "Tartan" urethane surfacing is permanently marked for eight basketball courts (in addition to a regulation hard-base court for varsity basket-



Kibbe Dome features a five-lane synthetic track similar to the one used at the Montreal Olympics.

ball), eight tennis courts, 11 volleyball courts, 16 badminton courts, and a 300-meter, 5-lane running track.

Various combinations of sports activities can be played simultaneously, thanks to canvas partitions that can divide the area into three sections (as shown in the photos).

The center also has a full radio/TV-press-observation gallery and, for non-athletic events such as concerts and commencement exercises, a portable stage that can utilize the additional seating on the playing surface.

The dome, curving on a radius of 247 feet, is made of two layers of laminated wood decking, with steel tubing structural bracing. The wood layers are separated by 7 $\frac{3}{4}$ feet of air and bracing members. Factory-built in 2 x 80-foot modules, the roof was site-assembled into 12 x 240-foot spans (wall to peak); two such spans were hoisted into place and fastened to compose each complete arch section.

Erection took just 24 working days on site. Insulation and weatherproofing were applied afterwards. The dome is designed to withstand violent winds and storms.

The Activity Center was developed over a ten-year period and was financed entirely through student fees and private donations.

The student fee is levied in part to encourage as much student use as possible. The intramural and recreational programs have been expanding and will continue to do so. The center is a facility for all of the students, not just the few, gifted varsity athletes.

The intramural program offers almost three-dozen different activities, in which about 70% of Idaho's 8,000 students participate.

The facility is a cultural and economic asset as well as a sports/recreation center. Trade shows, expositions, rodeos, and major entertainments are lured to Moscow year-round. Within a short time after opening, for instance, the Center hosted a successful home and recreation exposition.

The hugeness of the program is not an unmixed blessing. It brings with it problems of staffing for supervision and officiating. With nine courts, the Center could schedule 27 basketball games in an evening, but how could such a program be staffed?

"Unorganized" general recreation has had a healthy growth since the Center was opened. Facilities not previously scheduled are available from 6

A.M. to 10 P.M. and scores of students are taking advantage of these opportunities.

Still to come are on-site locker rooms and equipment-checkout facilities; these will make general participation even more attractive.

CREDITS

Complex design—Cline, Smull, Hammil Assoc.

Truss roof—Trus-Joist Corp.

Athletic director—Dr. Leon Green

Facility manager—Dennis Hedges

Intramural director—Robert Whitehead

Physical plant director—George Gagon

Photos—Dennis Hedges, Ed Breidenbach, 3M, Cline Smull Hamill, Trus-Joist