

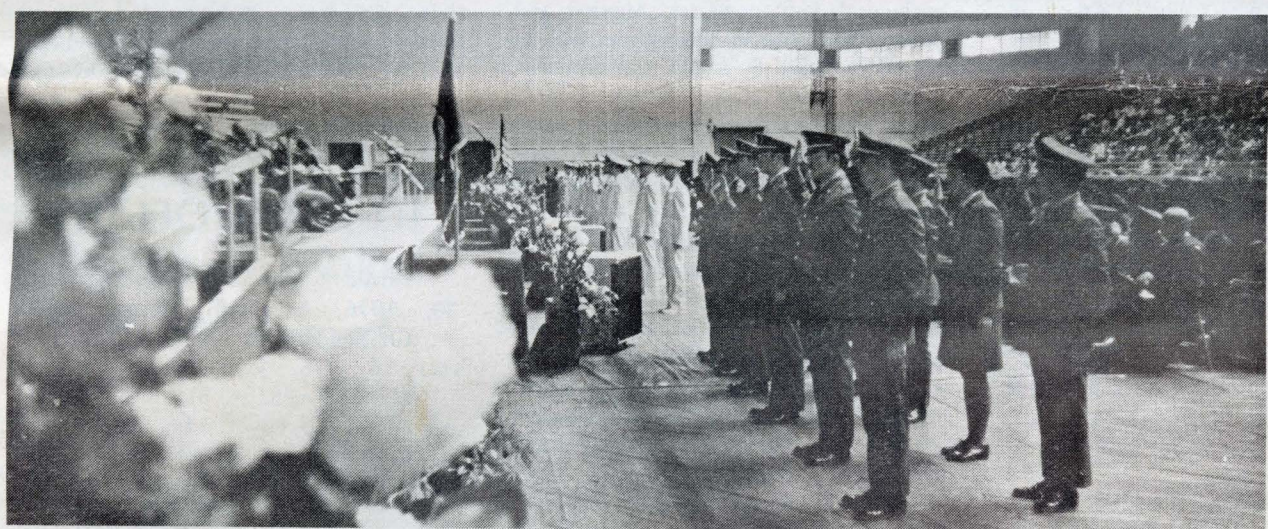
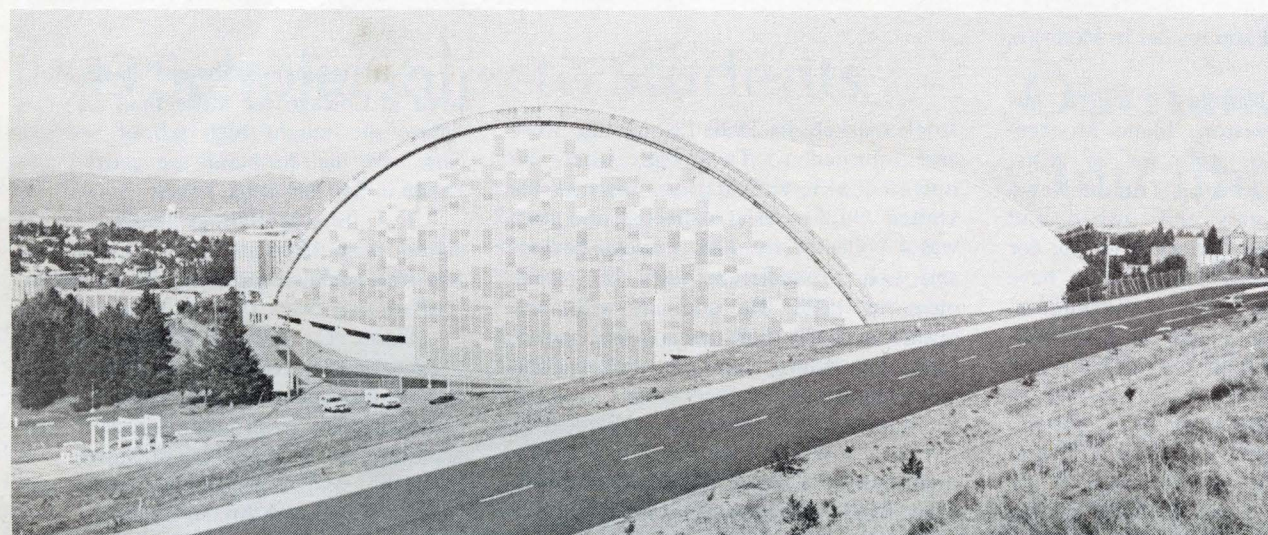
Other Winners: John F. Kennedy Airport



Gateway Arch in St. Louis



St. Lawrence Seaway



Dome Wins National Recognition

The "umbrella" that allows University of Idaho students to engage in sports activities in spite of rain or snow — the 14-story roof of the Kibbie-ASUI Dome — has been named the nation's Outstanding Civil Engineering Achievement of 1976.

The honor was conferred by the American Society of Civil Engineers at a national convention in San Diego, Calif. The 72,000-member society, founded in 1852, gives the award to the project that "demonstrates the greatest engineering skills, and represents the greatest contribution to civil engineering progress and mankind."

The dome, officially the William H. Kibbie-ASUI Activity Center, joins the St. Lawrence Seaway, the John F. Kennedy Airport, the Gateway Arch in St. Louis and the World Trade Center in New York City as recipients of the national honor. The award has been given annually since 1960.

The four-acre arch truss roof, erected in just 24 days, enclosed the concrete shell stadium completed in 1972 and provided the university with a multi-purpose facility. The Kibbie Dome has already housed football and basketball seasons, a home and recreation show sponsored by the Moscow Chamber of Commerce, a varsity track meet and open recreation.

The facility has two Tartan floors, a permanent flooring striped for sports such as tennis, volleyball and basketball, as well as Tartan Turf for football which is rolled down on top of the permanent floor during the fall season.

Architect for the facility was Glen Cline of Boise. Trus-Joist Co., also of Boise, produced the arch trusses.

Context

Offices of University Relations
Moscow, Idaho 83843

1950 A-000-05245
MR CARL C KIILSGAARD
MRS SHARON P KIILSGAARD
RT 1
VIOLA, IDAHO

83872