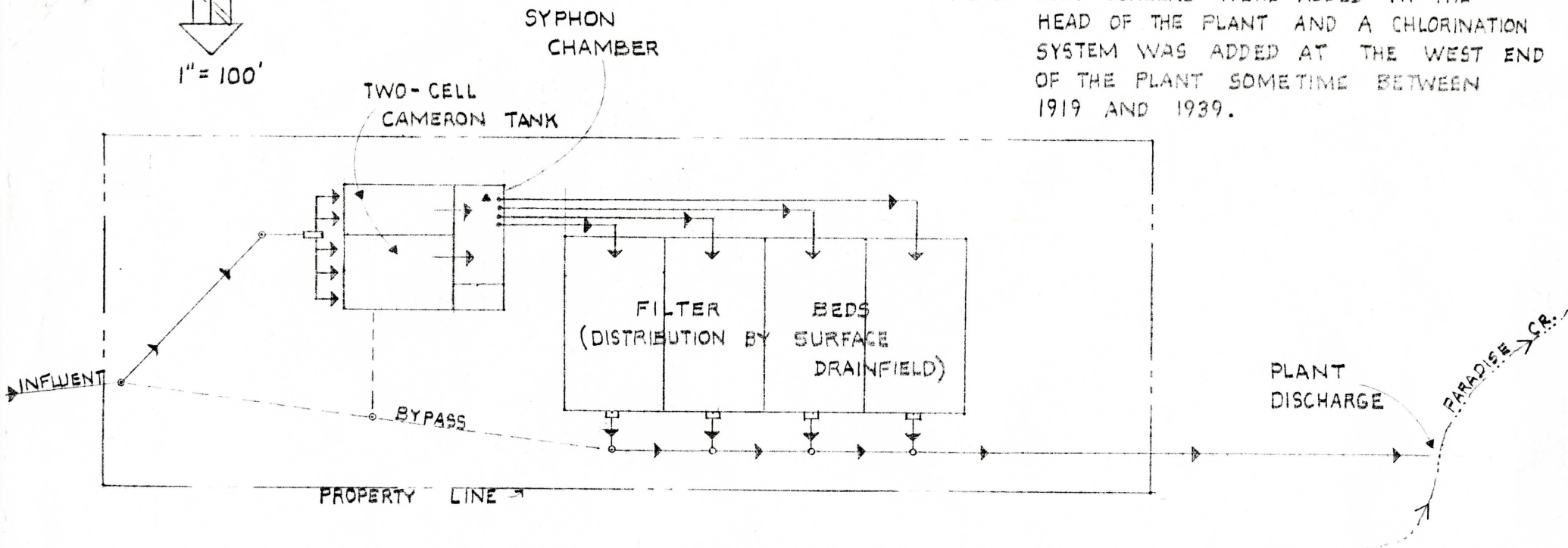
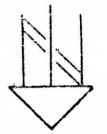


NOTE: BAR SCREENS WERE ADDED AT THE HEAD OF THE PLANT AND A CHLORINATION SYSTEM WAS ADDED AT THE WEST END OF THE PLANT SOMETIME BETWEEN 1919 AND 1939.

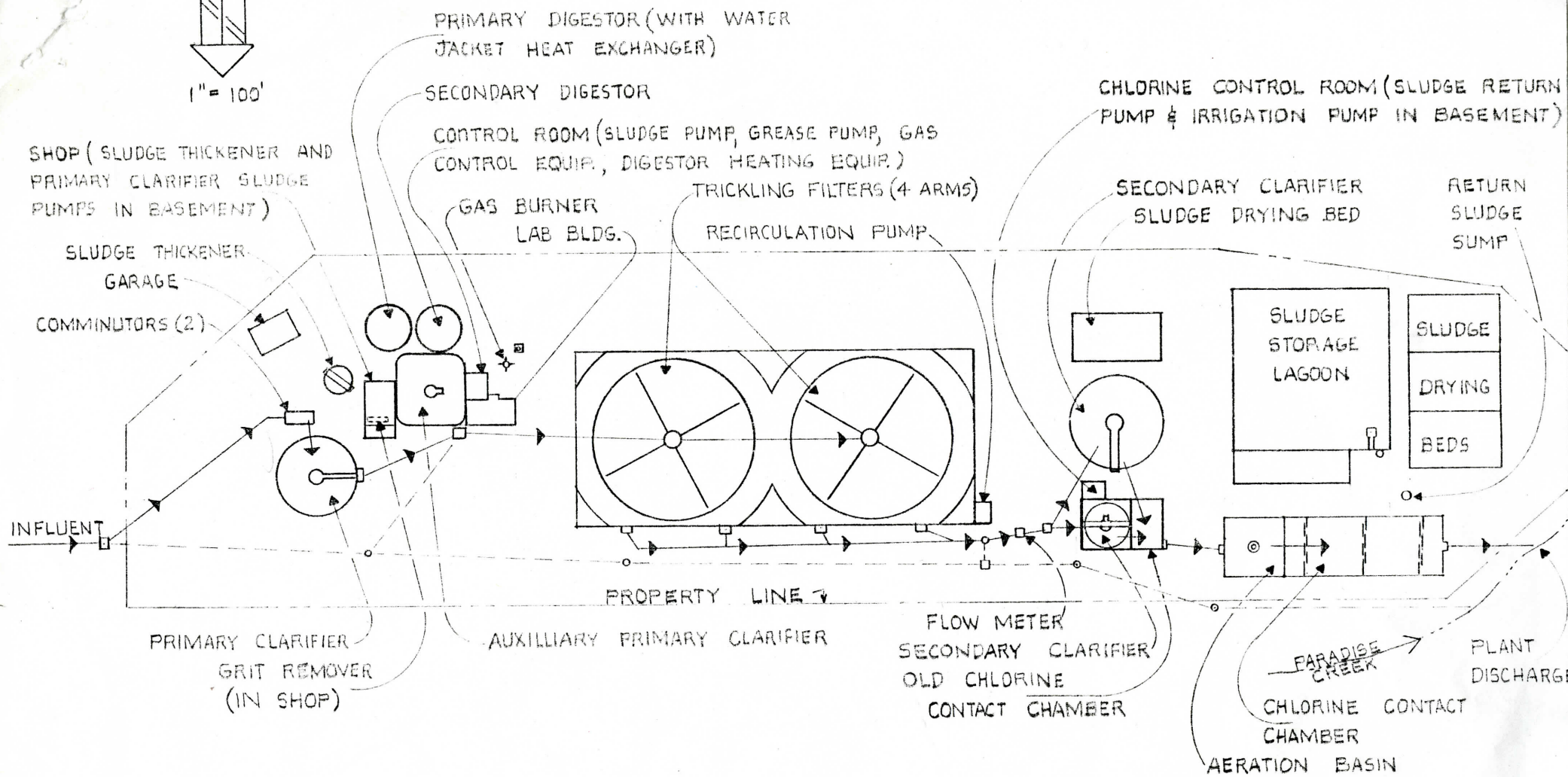


MOSCOW WASTEWATER TREATMENT PLANT
As Constructed - 1919

Dean C. Weyen, PE
ASST. CITY ENG'R.
OCT. 18, 1988



1" = 100'



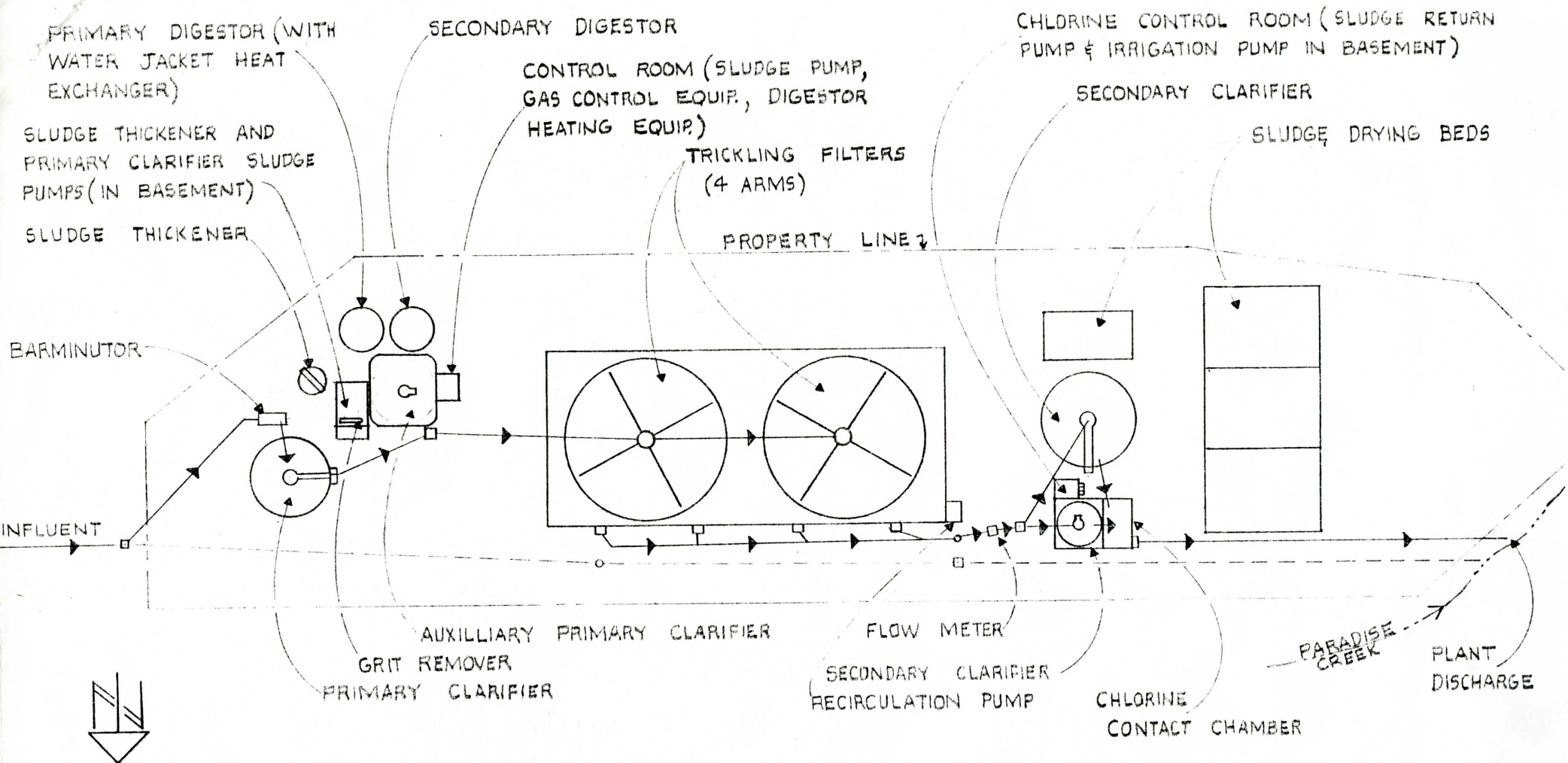
MOSCOW WASTEWATER TREATMENT PLANT

As Constructed - 1975

NOTE:

A SURFACE AERATOR WAS INSTALLED IN THE OLD CHLORINE CONTACT CHAMBER IN 1982.

Dean C. Weyen, PE
 ASST. CITY ENG'R
 OCT., 1988



MOSCOW WASTEWATER TREATMENT PLANT

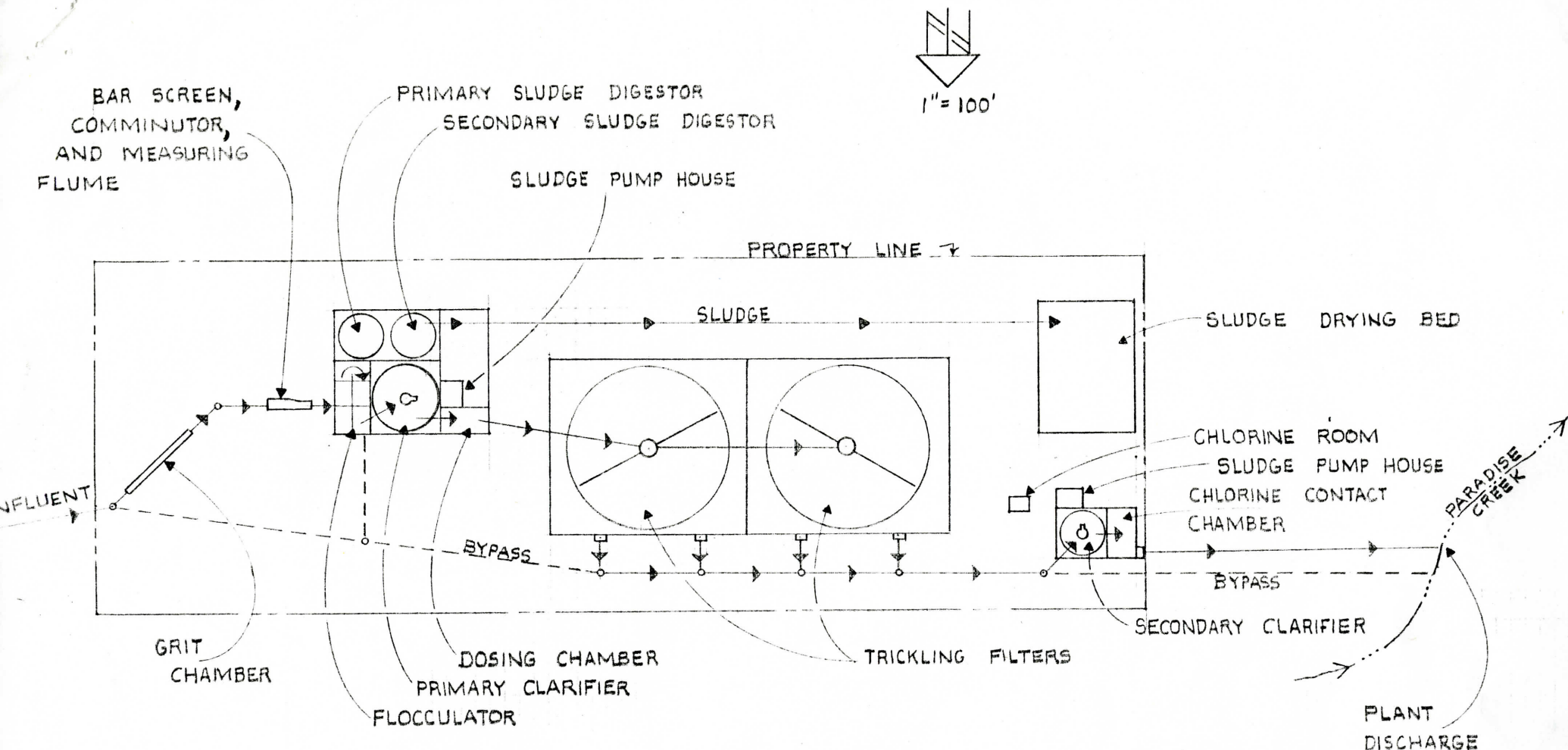
As Constructed - 1958

NOTE:

IN 1961 THE FOLLOWING IMPROVEMENTS WERE MADE:

- | | |
|--|------------------------------------|
| 1. SHOP BLDG. | 6. ADDED A SLUDGE DRYING BED |
| 2. LAB BLDG. & LAB EQUIP. | 7. NEW DIGESTOR GAS CONTROL EQUIP. |
| 3. SLUDGE TRUCK LOADING STANDPIPE | 8. IRRIGATION SYSTEM |
| 4. WASTE GAS BURNER | 9. AUTOMATIC CHLORINE FEED |
| 5. ADDED A COMMINUTOR TO THE EXIST. BARMINUTOR BASIN | 10. PAVING |

Dean C. Weyen, PE
ASST. CITY ENG'R.
OCT., 1988



MOSCOW WASTEWATER TREATMENT PLANT
 As CONSTRUCTED - 1939

Dean C. Weyen, PE
 ASST. CITY ENG'R
 OCT, 1988