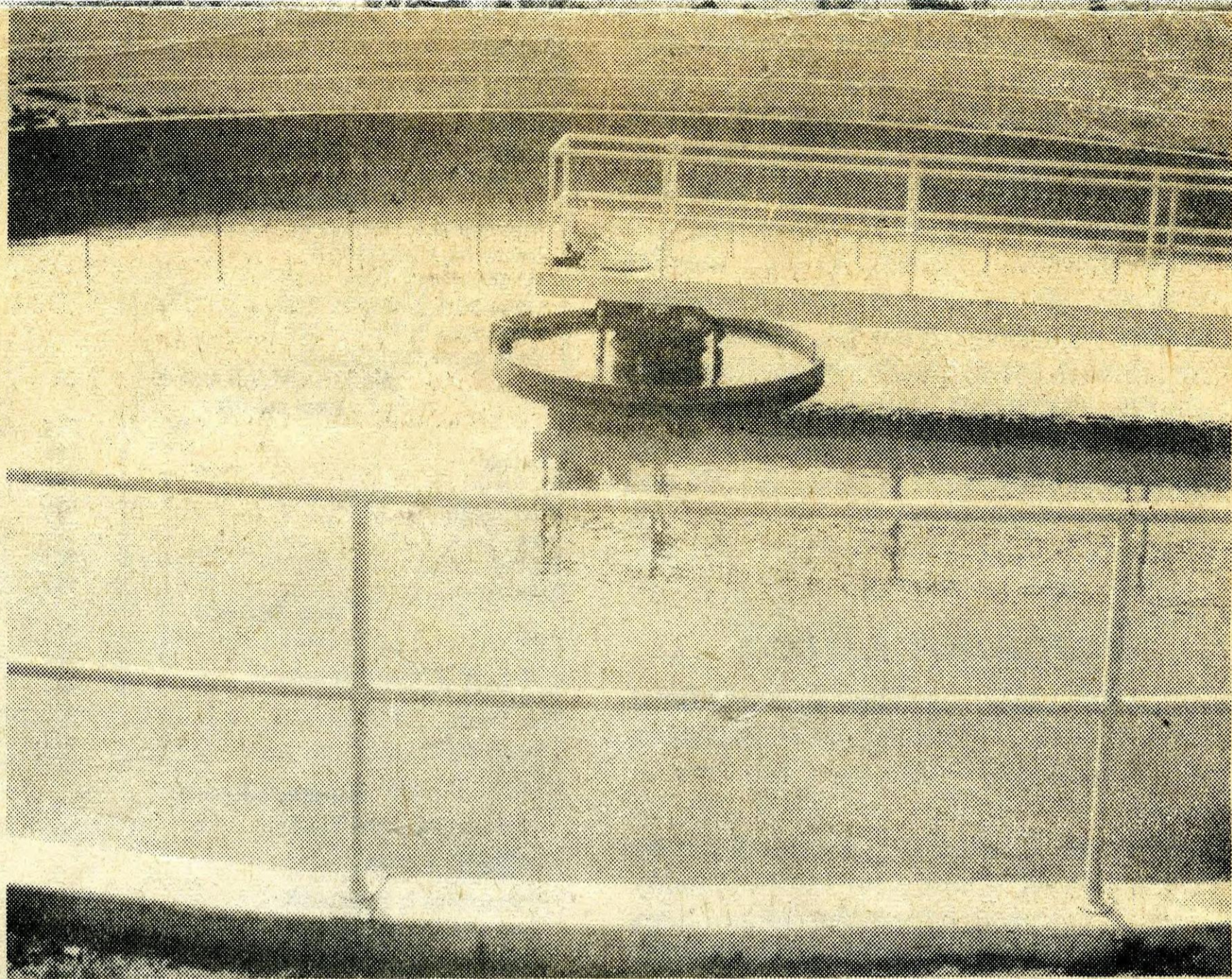


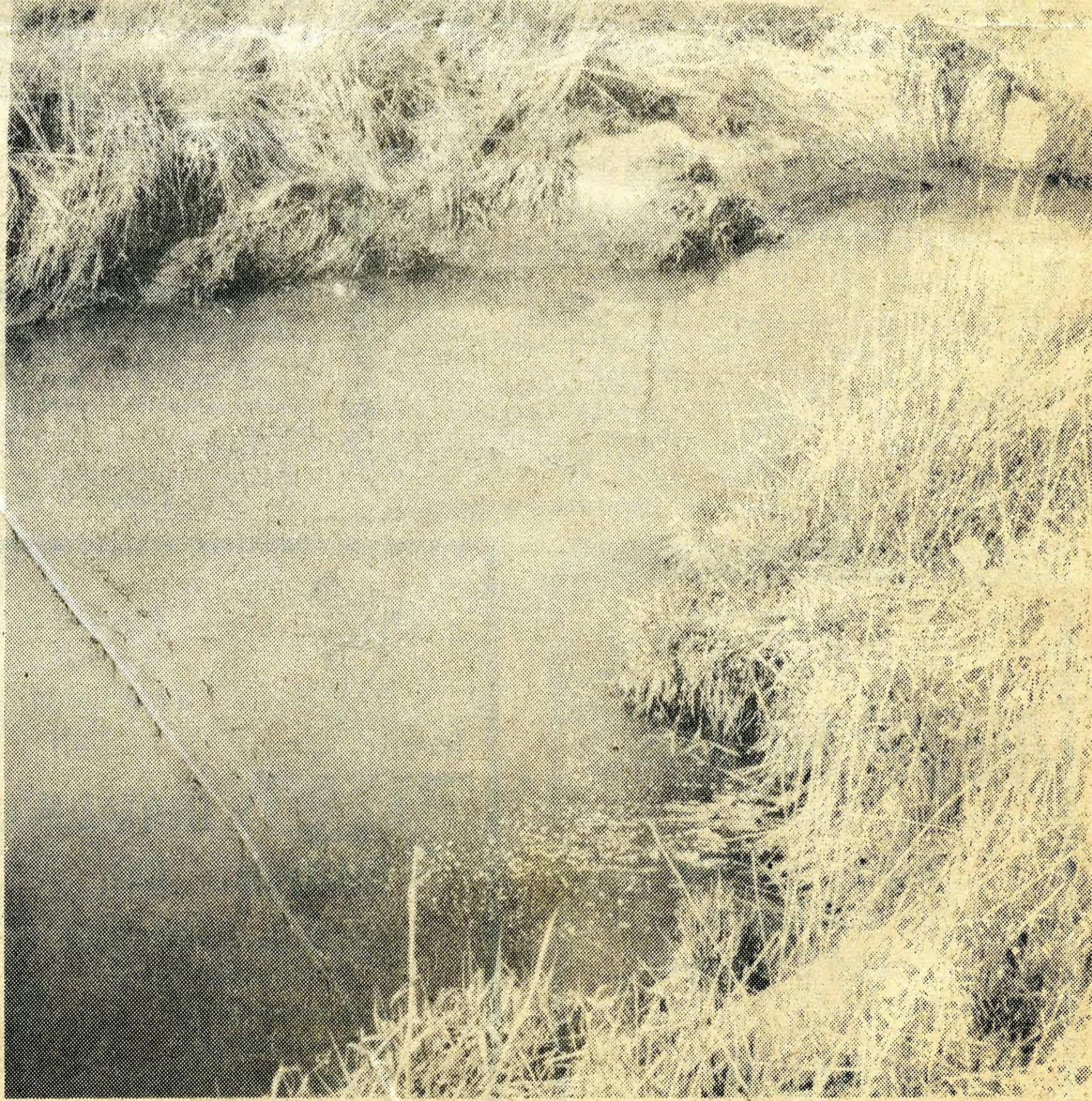
SLUDGE PUMP — Most of the system works on gravity flow but sludge must be pumped into the digesters and water re-circulated. The thickened sludge must be pumped with the large piston pump shown here in order to move it into the digester tanks. To maintain operation of the pump, a small amount of water must be added to the sludge as it enters the piston chamber, and the piston must be oiled constantly. All pipes in the plant are color coded to show whether they carry water, sludge, or gas.



FINAL SETTLING TANK — Before discharge into Paradise Creek the effluent is settled in a terminal settling tank. Any remaining solids that have not been caught are allowed to settle out and are re-circulated. Water overflow is channeled out and goes directly into the creek. Before the final settling chlorine is added to the water to kill any bacteria that remain.



Sludge is pumped into trucks, used as field fertilizer, and the material is used for gardens. Some sludge is dried and used as animal feed. When the material is used for animal feed, the department recommends it be used for food.



FLOWING INTO PARADISE CREEK — The effluent from the treatment plant can be seen flowing into Paradise Creek at the lower right. The water produced by the treatment plant is actually cleaner than the water in the creek above the plant. The clearer water can be seen mixing with the creek water.