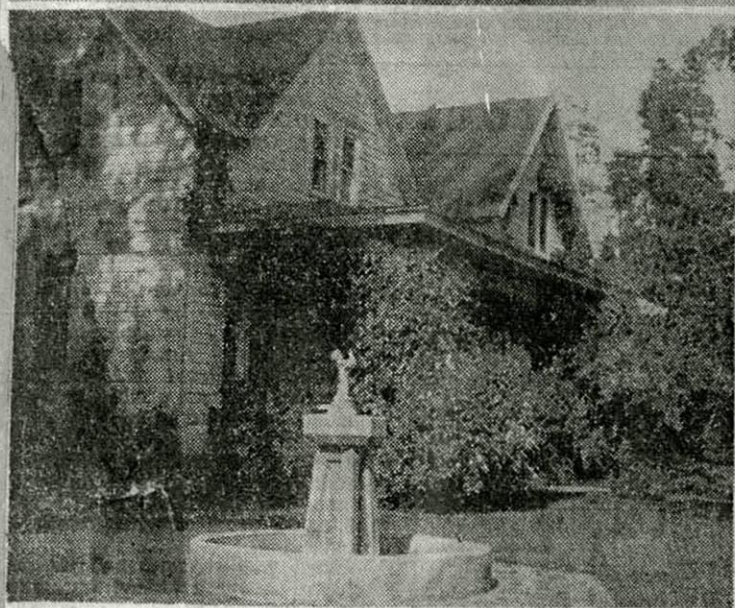
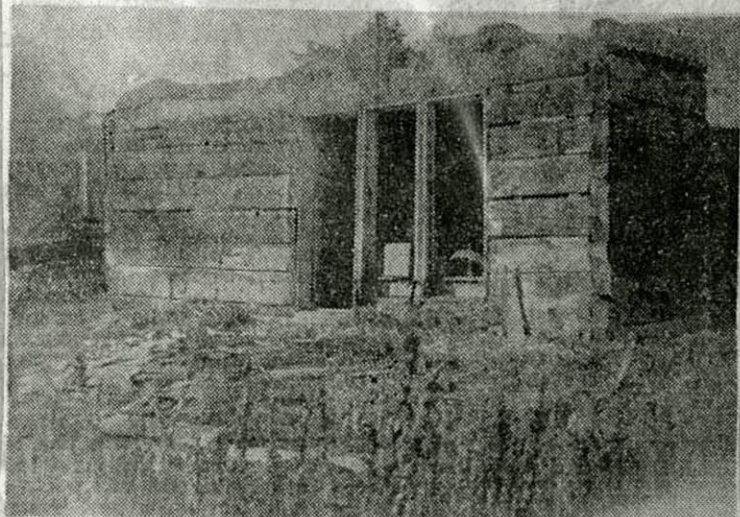


SUNDAY MORNING, NOVEMBER 23, 1941.

# the Inland Empire

## Civil War Relic Is Uncovered



Believed to be the first house built in the Potlatch, Idaho, region this aged log cabin, dating back to 1865, recently was uncovered when outside sidings were removed, revealing hand hewn logs in perfect condition. The cabin is on the W. E. Hearn place and was considered a blot on the landscape. The modern Hearn residence is shown here for comparison.

## UNCOVER CABIN OF ANCIENT DAY

Building of Hand-Hewn Logs  
Was Erected Near Potlatch  
During Civil War.

POTLATCH, Idaho, Nov. 22.—An old landmark in the Potlatch district has been literally uncovered in the razing of an unsightly small building on the W. E. Hearn place, northwest of Potlatch. In making some improvements on the place, it was decided to remove this old structure, which was considered more or less of a blot on the landscape.

After the roof had been removed, as the siding began to come off, it was discovered that a log building, hand-hewn and dove-tailed, had been sided and lined with lumber, which had completely camouflaged its identity.

Hearn recalls that one of the old-timers in this vicinity, the late George Benson, who visited at his home many times, spoke of a little log house which stood on the side hill near the site of the present Hearn home, and from which he took his bearings when, as a pioneer, he used to trek across the country to Colfax and return with a sack of flour on his shoulder.

Still living in this section of the country are Mrs. Homer Canfield of Harvard, Idaho, and Mrs. G. W. Smith, who resides on Fiddler's ridge, who have given some interesting history of the place. The tract of land was homesteaded by Steve McCoy in 1865 and the log house was his home.

There seems to be no doubt in the minds of these pioneers that this was the first house built in the Potlatch area.

About 1877 Mr. McCoy deeded the place to a friend, Frank Peterson, with whom he lived in his declining years. Mrs. Canfield is a daughter of Mr. Peterson and has spent her entire life in this district. Mrs. Smith was born at Princeton and she too recalls many of the details.

Hearn states that the logs are in good state of preservation and will be put to further use.