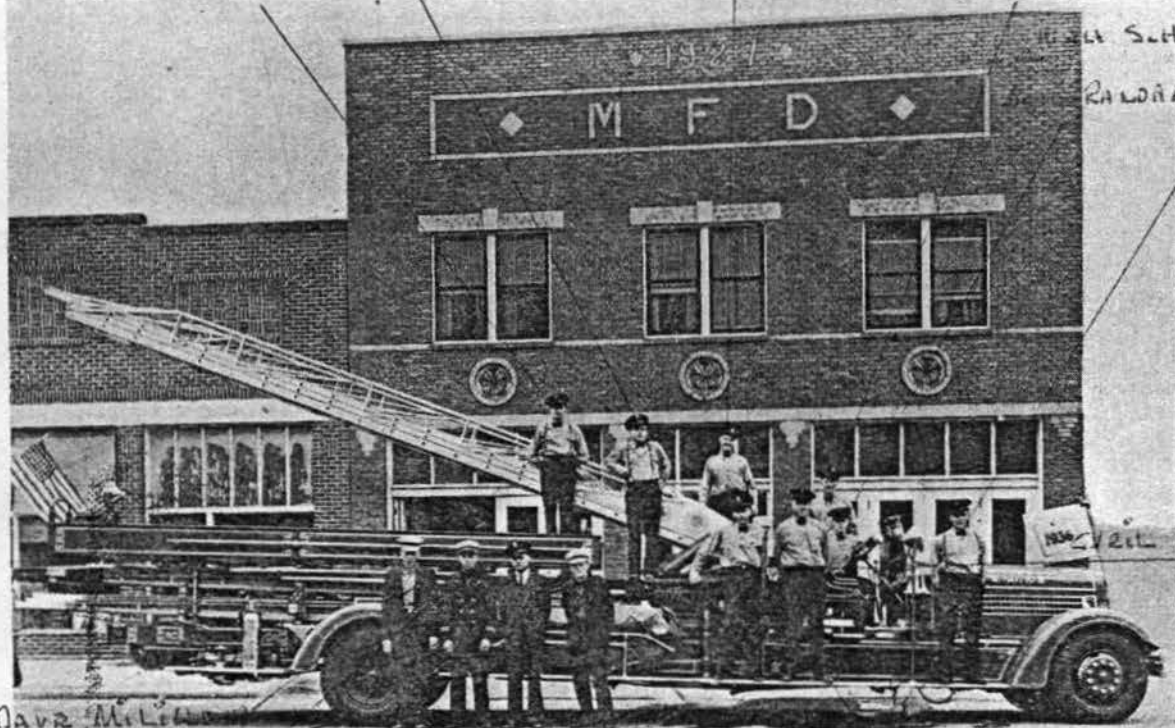


# The Northwest FIREMAN



DECEMBER  
1937

WILSON ROGERS      Russ TATE      ARDIE J. ZISKILL      JIM HELPS



DAVE MILLER      CARL SMITH      HARRY BRAZIER      DAVID KOSLEY  
SALES REP. FOR HOWARD-CORP. CO. - SELL TRUCKS TO CITY

Headquarters Station of the Moscow, Idaho, Volunteer Fire Department, showing the new fully equipped Seagrave Junior Aerial Ladder Truck

See story on page 14

See picture no. 62.

CLIAN W. HZ  
- A.P.D.

## A Short History of the MOSCOW FIRE DEPARTMENT

The Moscow Volunteer Fire Department is a corporation organized under the laws of Idaho. The Department consists of 54 men including department heads. The officers are Carl Smith, Chief; H. D. Powell, First Assistant Chief; Harry Frazier, Second Assistant Chief; C. B. Green, Treasurer; V. H. Orr, Finance and Board Secretary; E. H. Estes, Department Secretary. The Board of Directors consists of Carl Smith, Chairman; V. H. Orr, J. Arvid Anderson and Thomas Kimberling.

The Moscow Fire Department is unique in more than one way. The Department owns the Fire Station and collects \$110.00 monthly rent from the city. The building is a two-story brick structure approximately 60'x100' in dimensions. They have sufficient dishes, silverware, linen, etc., to take care of 200 people at one sitting. All silver and dishes are monogrammed "M.F.D."

Some three years ago the fire department purchased the business building adjoining the station. The firemen purchased the first piece of motor fire apparatus used in the city, however, they presented this equipment to the city. They are proud possessors of the first hand operated fire pump ever to come to the Northwest. Equipment consists of one chemical and hose truck, one pumper and hose truck (American-Lafrance) and the latest addition a Seagrave Junior Aerial ladder truck fully equipped with 1500 feet 2½-inch hose, 250 feet 1-inch, 65 foot aerial ladder, and 252 feet of ground ladders. The department consists of three companies, No. 6, 7, and 8, the latter being the one who mans the newest truck.

Moscow is a city of some 7,000 population and is the home of the Idaho State University. Each Yuletide season the Moscow Department sponsors a grand and gala ball on the campus which is the social event of the year. Guests come from all over the Inland Empire for this affair.

The Moscow Fire Department is a strictly volunteer organization dating back to the '90s, and have always refused to accept compensation from the city for their services. They have a great record over a period of many years for a very low per capita loss.

Carl Smith has been a member of the department for 30 years and for 24 years has been chief. He has seen it grow from the hose cart age to the present motorized department. If you knew Chief Smith and the members of his department, you would not wonder at the marvelous record they have built and maintained over a period of many years. According to Chief Smith, before a man can become a member of the Police Department he must first be a member of the Fire Department.

Moscow is the only Volunteer Fire Department in the entire Northwest that can boast of a straight Aerial Ladder Truck. This apparatus was purchased in 1936 and already has served in a most useful capacity on at least four occasions. Six members of the department sleep at the station. The main hobby of the personnel is fire fighting and the prevention of fires.

"Are you a college man,"

"No. A horse stepped on my hat."—*Inland Veteran.*

## Fire Department BUDGETS

### The Moscow, Idaho Budget for 1938

The 1938 budget of the Moscow Fire Department will not be made until May 1938, but the budget for 1937 was as follows:

Amount appropriated .....	\$3,200.00
Amount expended	
for upkeep,	
estm. ....	\$2,550.00
Amount expended	
for salaries.....	None
Total cost year 1937.....	2,550.00
Net return to fire fund.....	650.00

The unexpended fund returns to City as general fund and is not carried forward to another year.

"There shall be music" in Burlington. Chief Monro is organizing a 25-piece band and advance information from outside sources gives us the hint that already they are blowing some hot music.

## ANSWERS

(Answers to Questions on Page Seven)

- |   |   |
|---|---|
| <p>No. 1—Pry off inside window frame with axe this leaves the entire interior of window frame exposed for careful inspection.</p> <p>No. 2—See that hose is straight with no twists in it otherwise when put under pressure hose might uncouple.</p> <p>No. 3—By "size-up" is meant the making of a quick survey of the situation relative to the fire as encountered by the department upon its arrival.</p> <p>No. 4—Atmospheric conditions, direction and intensity of wind, property exposed through ventilating, apparatus on hand and life hazard.</p> <p>No. 5—It may damage fire hose which may come in contact with it later.</p> <p>No. 6—Banking up of smoke, gases and heat at top of structure and spreading out of same due to inability to reach the atmosphere.</p> | <p>No. 7—Heat, mechanical injury, chemicals and neglect.</p> <p>No. 8—a. Bowline.<br/>b. Square knot.</p> <p>No. 9—a. Lower section of an extension ladder.<br/>b. Upper section of an extension ladder.<br/>c. The butt is the bottom, or ground end of a ladder.</p> <p>No. 10—a. Friction tends to reduce the flow of water through a line of hose.<br/>b. Friction loss in fire hose depends upon the velocity of the water and the interior condition of the hose. Diameter of hose, quality and condition of hose, rate of flow of water, nozzle and engine pressures, all enter into the problem of friction loss, either by affecting the velocity of flow or the smoothness of flow.</p> |
|---|---|