

~~Date~~ ~~BC cr.~~ ~~Dynamite cr.~~

Date BC cr. ~~Dynamite cr.~~ ~~Big cr.~~

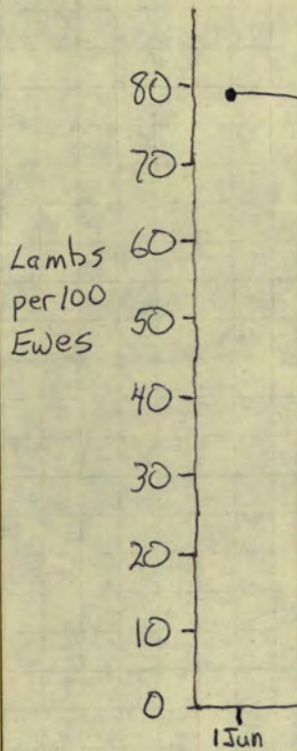
~~18 Jun 90~~  
~~18 Jun 90~~  
1 Jun 90

21E, 18L, 7R (I, II)

1989

(Big Cottonwood/Dynamite Creek)  
Lamb Tallies From Aerial Tracking (1 Jun - 6 Sep, 1989)

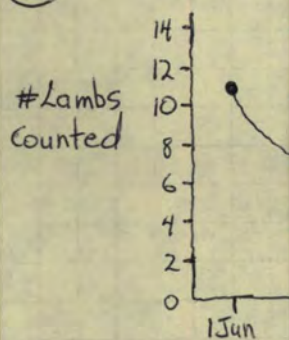
①



Winter Weather

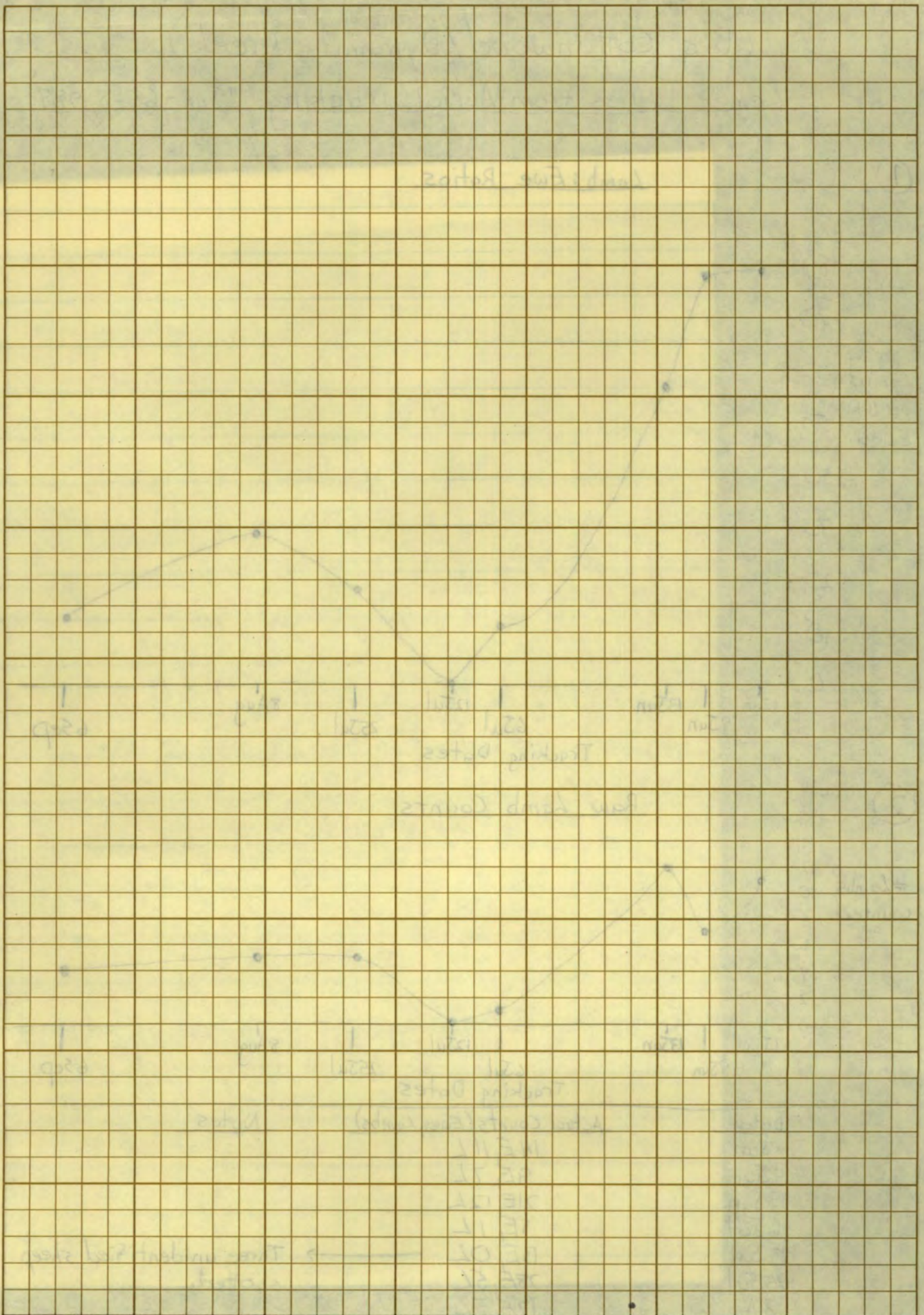
Year (median)	83/84	84/85	85/86	86/87	87/88	88/89	89/90
NOV MIN	30°	26	20	26	23	25	24
NOV SNOW	0"	1	0	0	0	T	0
DEC MIN	9°	8	5	13	17	13	17
DEC SNOW	9"	6	1	1	1	3	2
JAN MAX	30°	28	33	27	29	30	48
JAN MIN	17°	10	12	13	13	14	27
JAN SNOW	9"	10	11	3	8	9	T
JAN P							
FEB MAX	37°	32	38	40	41	34	35
FEB MIN	16°	7	25	22	20	13	15
FEB SNOW	9"	15	9	1	6	8	T
FEB PRECIP	1.05"	.78	3.01	.39	.77	.39	.14
MAR MAX	46°	44	50	49	46	49	50
MAR MIN	28°	19	29	28	25	29	25
MAR SNOW	5"	12	3	0	3	T	0

②



Date  
 1 Jun  
 9 Jun  
 13 Jun  
 6 Jul  
 12 Jul  
 25 Jul  
 8 Aug  
 6 Sep

20E, 10L  
 17E, 5L  
 31E, 4L

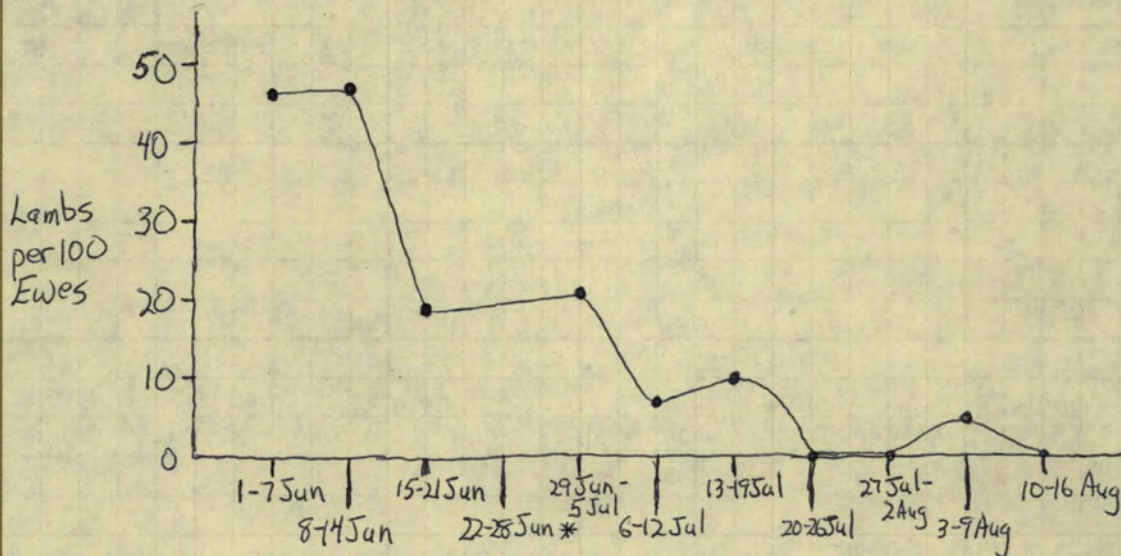


1989

(Big Creek - From Rough Canyon to Cliff Creek)  
Weekly Lamb Tallies From Ground Observation (1 Jun - 16 Aug, 1989)

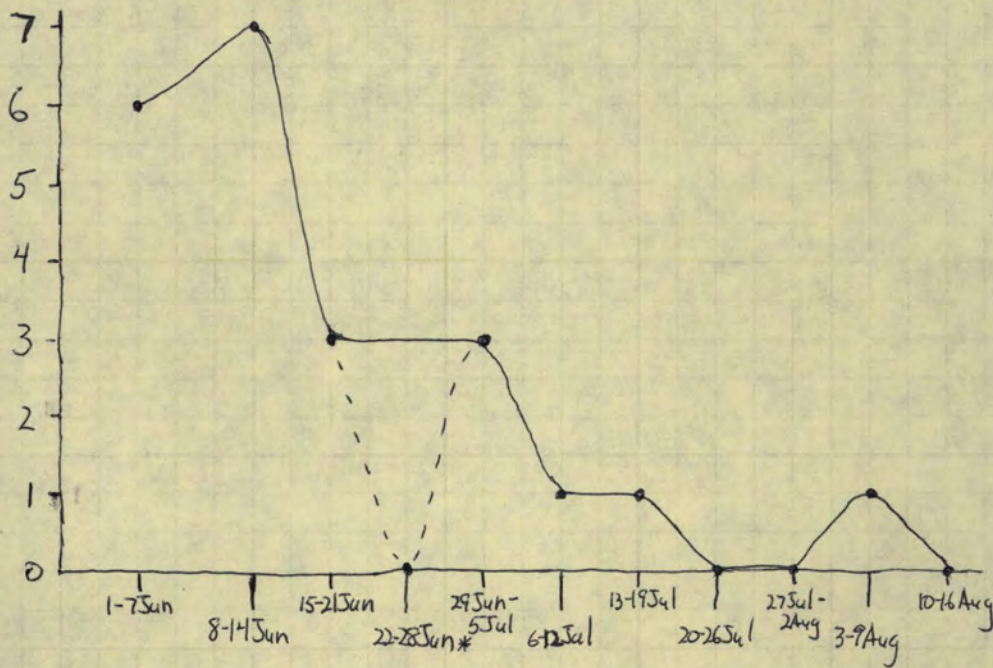
①

Lamb:Ewe Ratios

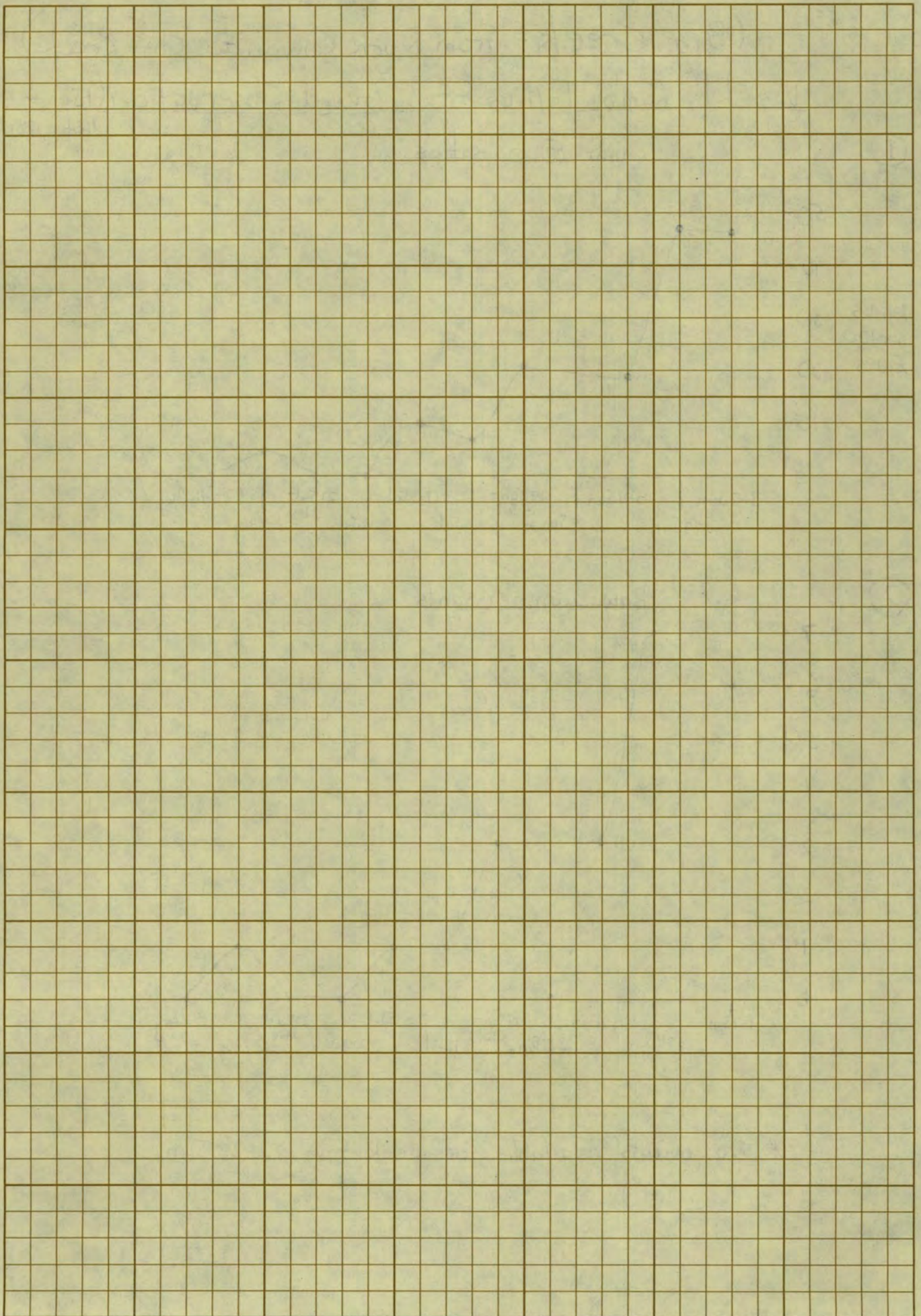


②

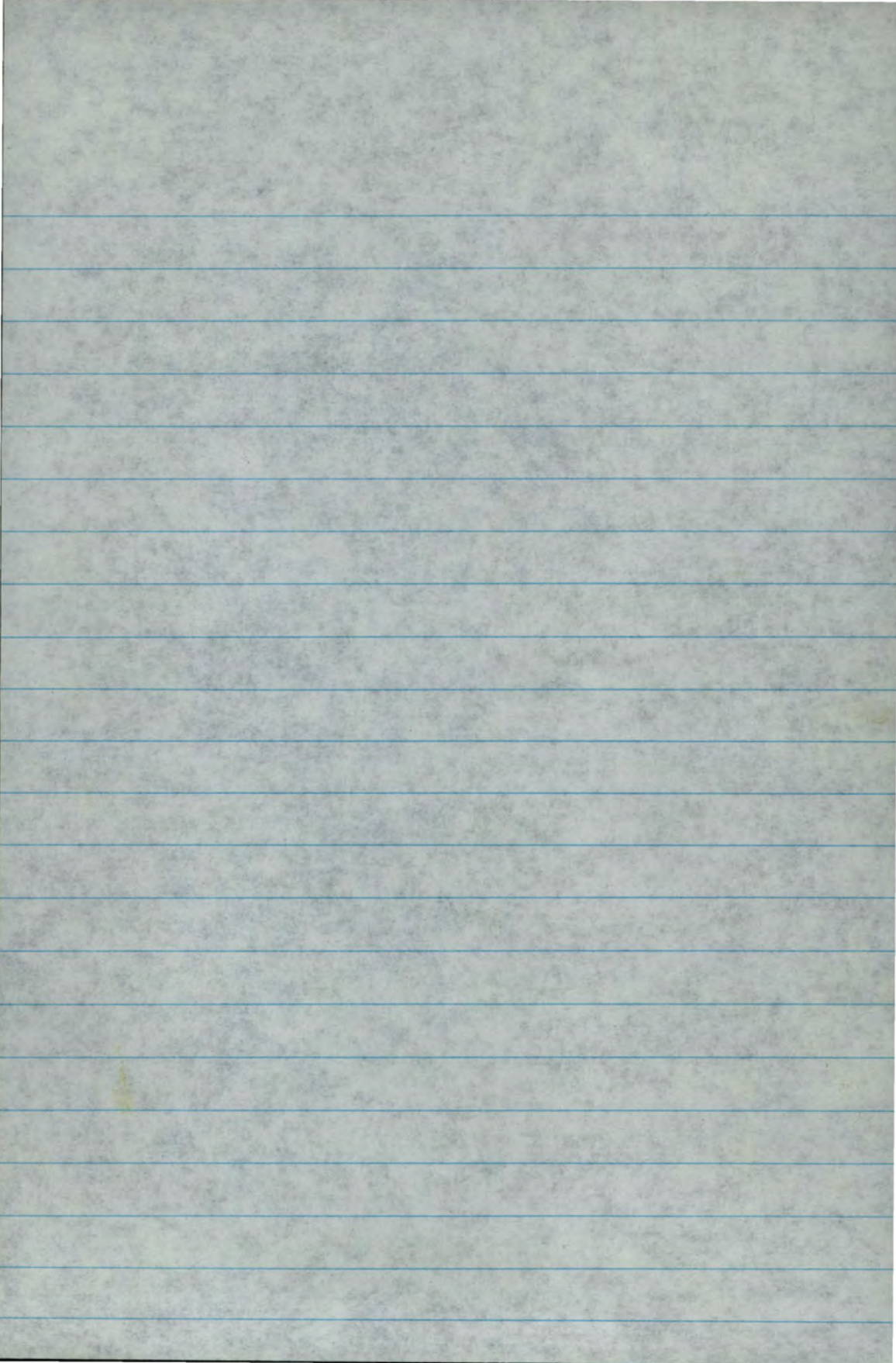
Raw Lamb Counts



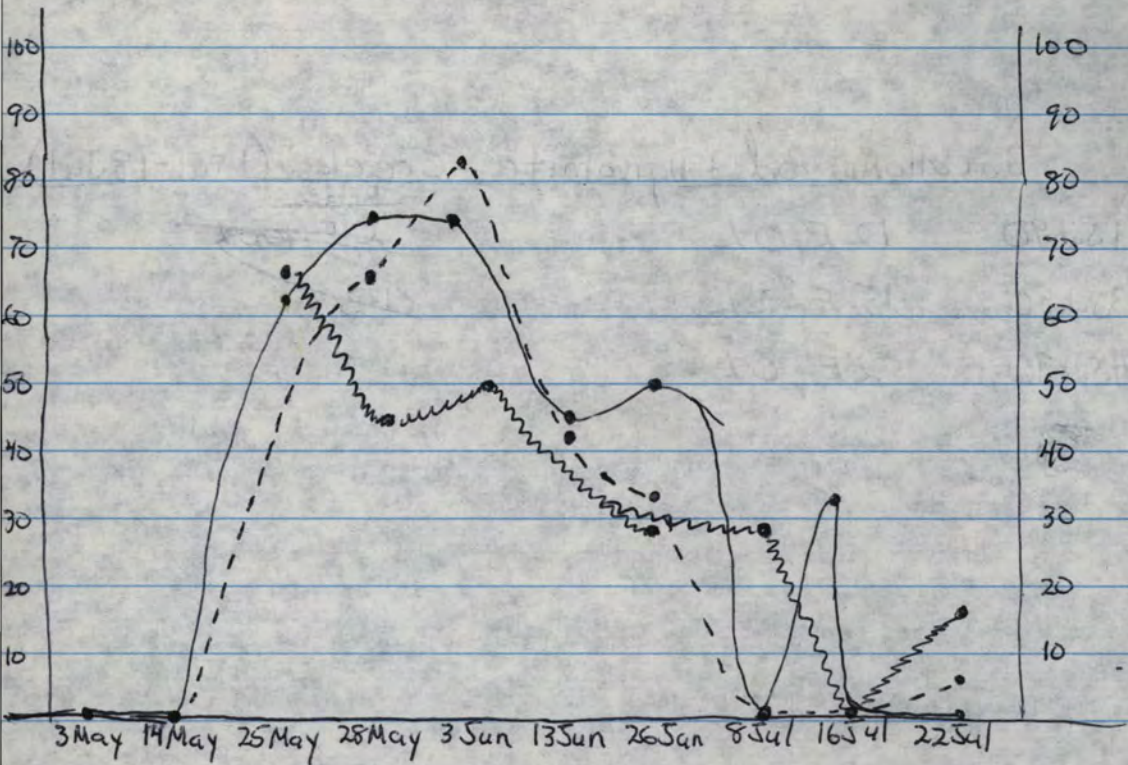
\* No counts available for week from 22-28 Jun.



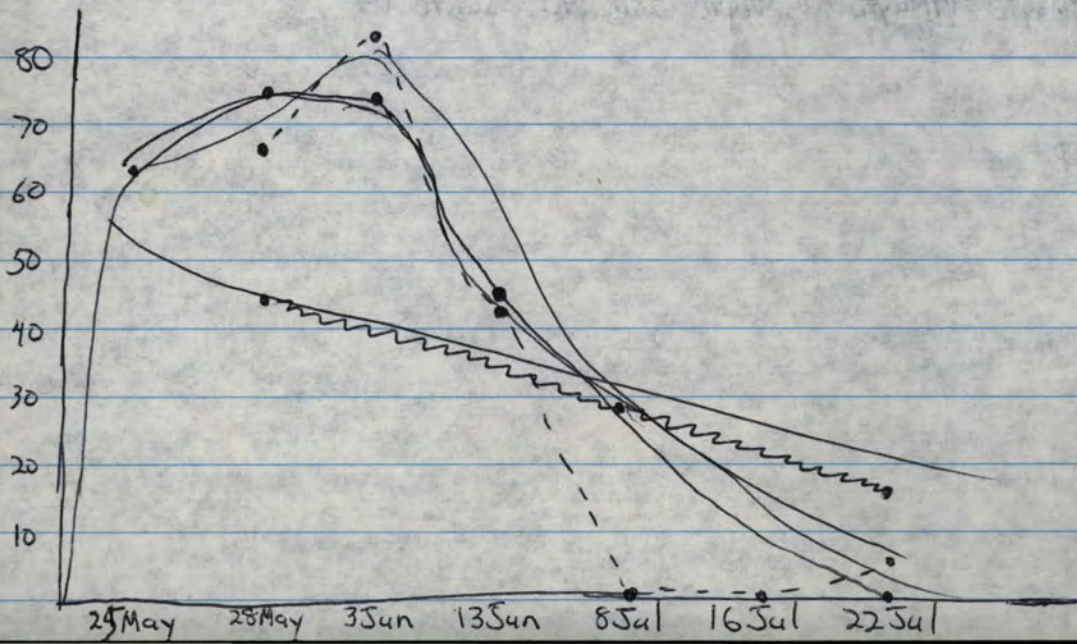
Common Name	Scientific Name	Code
Douglas Fir	<i>Pseudotsuga menziesii</i>	Psme
Ponderosa Pine	<i>Pinus ponderosa</i>	Pipo
Lodgepole Pine	<i>Pinus contorta</i>	Pico
Limber Pine	<i>Pinus flexilis</i>	Pifl
White Bark Pine	<i>Pinus albicaulis</i>	Pial
Mountain Hemlock	<i>Tsuga mertensiana</i>	Tsme
Engelmann Spruce	<i>Picea engelmanni</i>	Pien
Mountain mahogany	<i>Cercocarpus ledifolius</i>	Cele
Juniper	<i>Juniperus</i> ?	?
Bitterbrush	<i>Purshia tridentata</i>	Putr







— Big Creek  
 - - - B. Cottonwood/Dynamite Creeks  
 ~~~ Monumental Creek



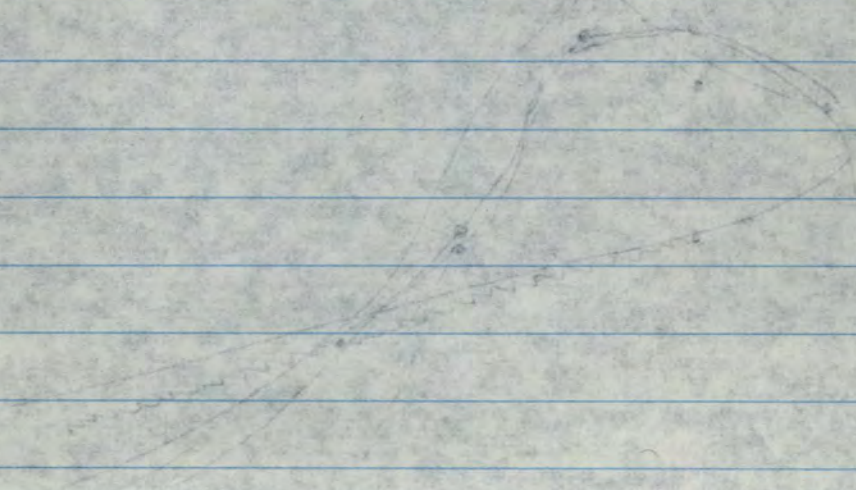
B. Cottonwood + Dynamite Creeks (1 Jul - 18 Jul)

|          |           | <u>Ratio</u>           |
|----------|-----------|------------------------|
| 1 Jul 90 | 12 E, 0 L | <del>0 E / 100 L</del> |
| 3 Jul 90 | 15 E, 2 L | 13.3                   |
| 4 Jul 90 | 2 E, 0 L  |                        |

~~scribble~~

3 May 90 14 May 90 25 May 90 28 May 90 30 Jun 90 13

~~scribble~~



31  
30  
22

|        | BC/Dyn.        |        | Mon.                | Big   |
|--------|----------------|--------|---------------------|-------|
| 3 May  | <del>0/3</del> | ✓0/3   |                     | 0/3   |
| 14 May | <del>0/1</del> | ✓0/1   | 24                  |       |
| 25 May |                | ✓7/11  | 2/3                 | 5/8   |
| 28 May | 16/24          | ✓33/51 | <sup>306</sup> 5/11 | 12/16 |
| 3 Jun  | 24/29          | ✓39/50 | 1/2                 | 14/19 |
| 13 Jun | 10/24          | 15/35  | 2                   | 5/11  |
| 16 Jun | 19/28          | 21/31  | 7                   | 2/3   |
| 26 Jun | 1/3            | 2/5    |                     | 1/2   |
| 8 Jul  | 0/11           | 7/37   | 7/24                | 0/2   |
| 16 Jul | 0/8            | 1/13   | 0/2                 | 1/3   |
| 22 Jul | 2/28           | 4/62   | 2/12                | 0/22  |

|                  | BC    | Dyn.  |     |       |
|------------------|-------|-------|-----|-------|
| 14 May           | 0/1   | —     |     |       |
| 28 May           | 8/10  | 8/14  |     |       |
| 3 Jun            | 7/9   | 17/20 |     |       |
| 13 Jun           | 1/7   | 9/17  |     |       |
| 16 Jun           | 15/21 | 4/7   |     | 64    |
| 26 Jun           | 1/3   | —     |     |       |
| <del>8 Jul</del> |       |       | May | 0/1   |
|                  |       |       | Jun | 34/53 |
|                  |       |       | Jul | 0/11  |
|                  | 7/14  |       |     | 16/24 |
|                  | 1/2   |       |     | 64    |
|                  |       |       |     | 20/31 |
|                  |       |       |     | 2/36  |

0/4      40/62  
54/85      23/36  
7/37      5/75

20/31      64  
54/85      63      23      2