

DAVE LEWIS CABIN RENNOVATION PROJECT, SPRING 2007

Within the next 8 months we are planning to complete a historical restoration of the old Dave Lewis Cabin at Taylor Ranch Field Station. Funding for this project is provided through a generous donation by a private party, Mary Acker. The Lewis Cabin is approximately 100 years old and it had served as Dave Lewis' primary guest-lodging for the quarter century period from 1911 to 1936 when "Cougar" Dave was a big game outfitter (arguably one of Idaho's first commercial outfitters). The intention of this renovation is twofold: 1) To restore this old structure to its 1920's appearance. 2) To make the living space layout more useable for current summer-time use by UI students. A contractor will complete the project. They will interact during all phases with Field Station Managers to maintain the desired historical essence. The following list covers the primary jobs of the renovation project.

- Replace roof with something fire-safe yet reflective of the early 1900's (sod on synthetic pad is one possibility).
- Remove linoleum and replace floor with plank boards.
- Remove interior paneling and restore the inner walls to their original log appearance.
- Remove plywood ceiling and attic. Insulate roof and leave beams open.
- Conceal electrical wiring along exposed walls, perhaps with interior chinking or wood strips. Conceal plumbing. Electrical and plumbing will need to be modified.
- Rebuild/reconfigure the bathroom, reducing size and expanding area of the bedroom.
- Restore the kitchen to a more rustic appearance.
- Rebuild the front (north) porch so it is more rustic and has a roof covering of shakes (or sod to match primary building).
- Replace aluminum window frames with wood window frames.
- Create a rustic interior: including cupboards, furnishings, and appliances.

Oct 2006

Roof & demo package conceal electrical

Flooring

- open up 3 or so panels
- insulate from above
- ce. w/. visgrime

improve on state codes

Associated Roofing

stone coated steel

LDS

Brink

Add. info.

Additional photos

underneath the floor, above
[windows & sizes] the ceiling

- All door openings - measure
- wall thickness
- power receptacles
- foundation thickness

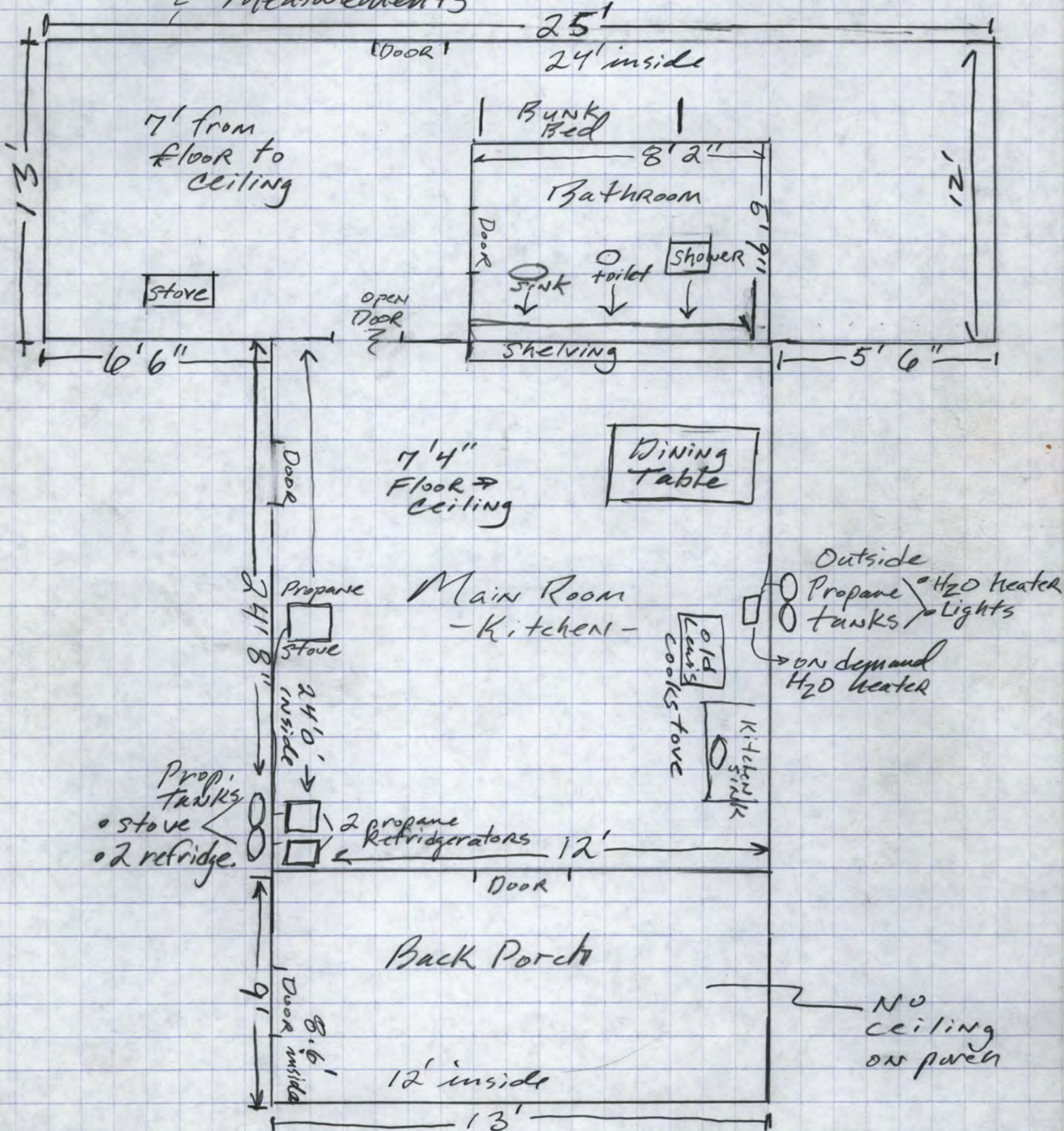
Menu of items

& options such as on the
patch

= moving plumbing to south Bathroom
wall

OLD LEWIS CABIN

Layout (as per 11/06)
 & Measurements



OLD LEWIS CABIN

Layout (as per 11/06)
 & Measurements

