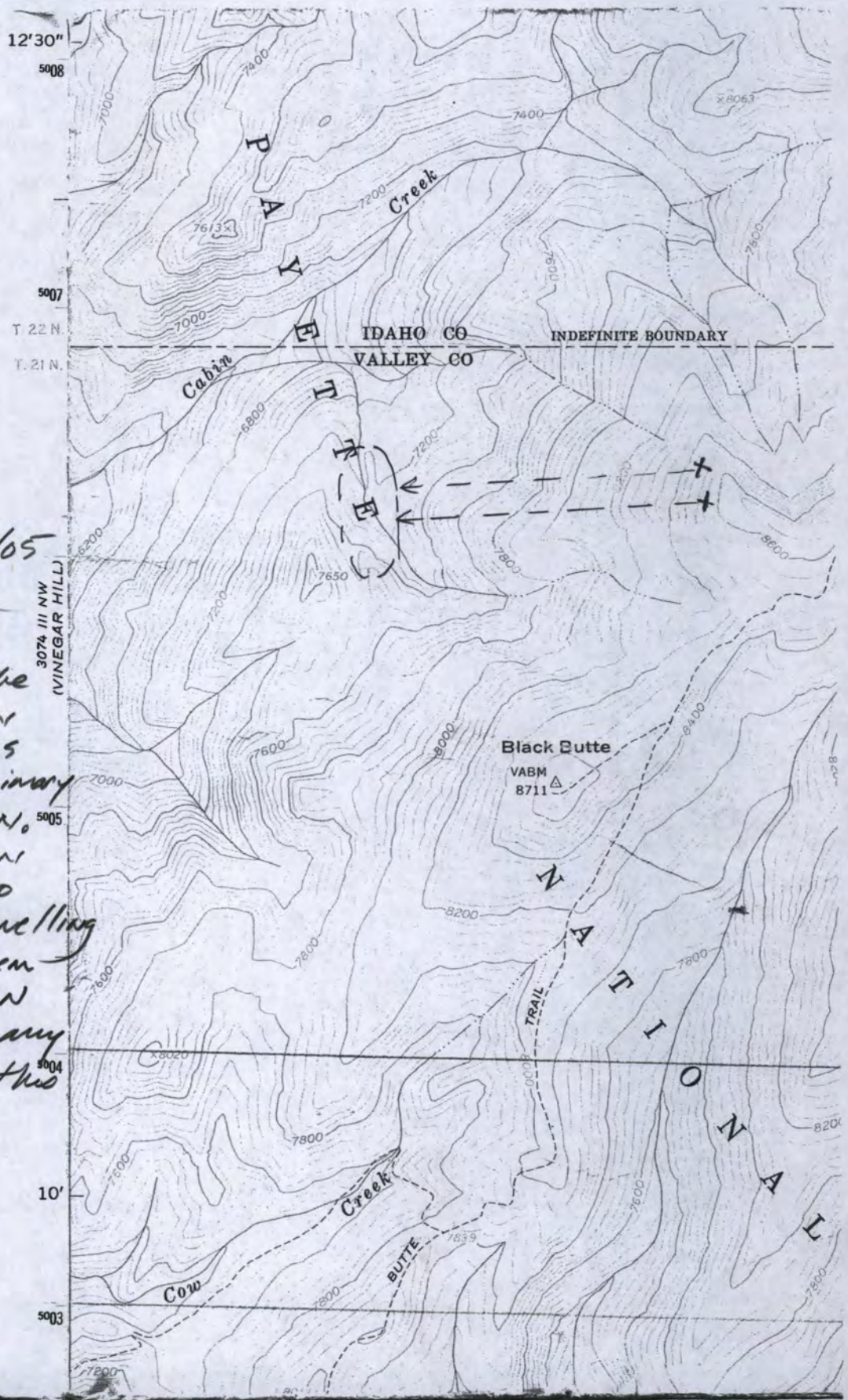


6/18/05

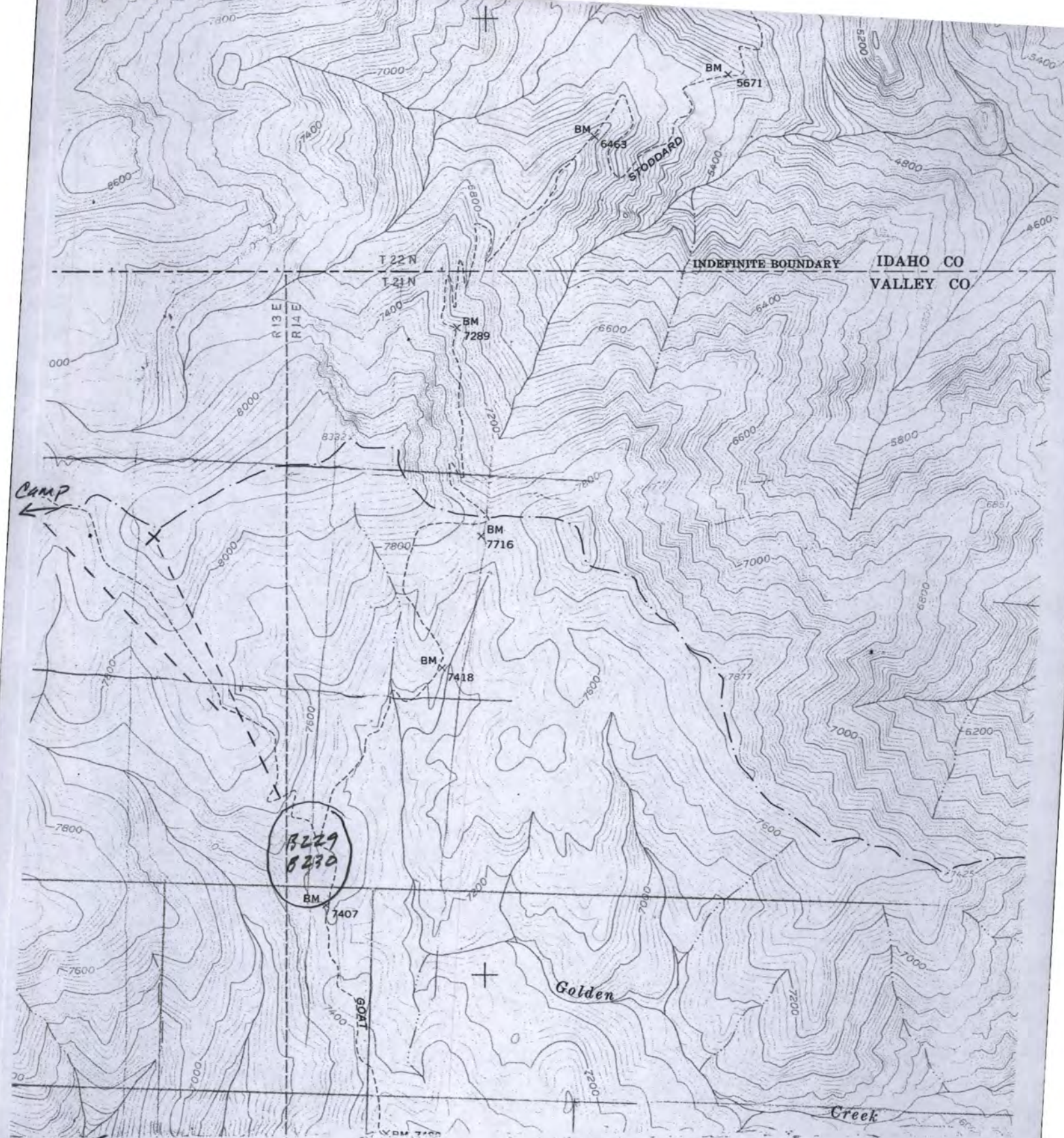
June 18, JA, NR 9:30-10 pm

Strong signal on both B 229 and B 230 in an upper S.F.K. of Cabin Cr.



Summary from 6/18/05 and 6/19/05

Even with both collared wolves in the Black Butte - Golden Meadows vic., there does not seem to be a primary point of localization. When tracks are seen they always seem to be single wolves travelling trails. There does seem to be more wolf sign on Boat Rdg. than any other area searched this spring period.



6/19/05

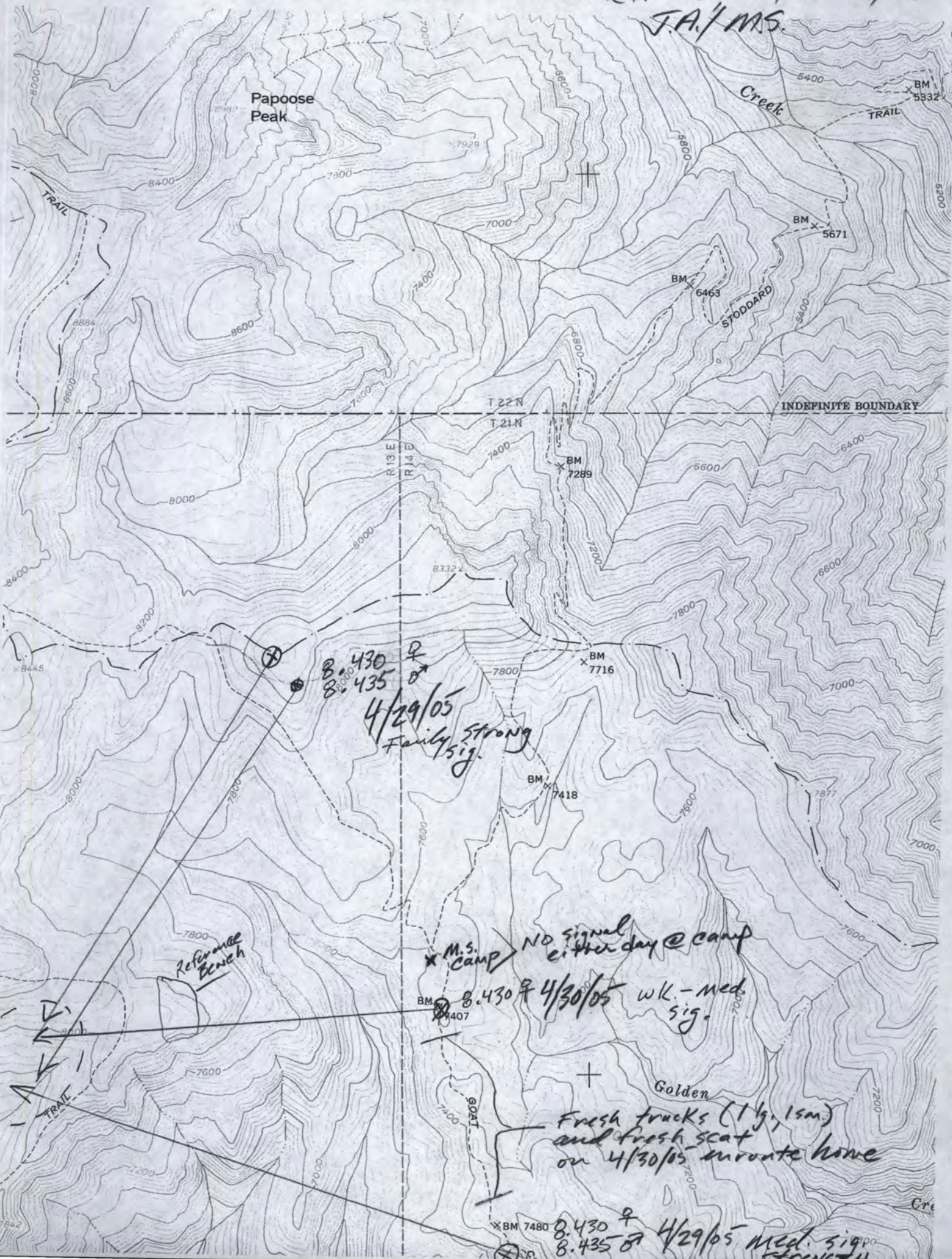
June 19, J.A., N.R.

Directional signal shooting down Cougar Cr. from first wall tent site

Also today, Neil and I searched yesterday's location in the upper Cabin Cr. forks - No sign of rendezvous site: very little wolf sign (2 tracks, 1 possible bed)

DEN SEARCH #1 5/29-30/05

J.A./M.S.



Field Narrative Report Form
Nez Perce Tribe
Wolf Recovery Project

Pack:

Personnel:

Hitch Start Date (MM/DD/YY):

Hitch End Date (MM/DD/YY):

Objectives:

Cooperating Agency Contacts (Name, agency, phone number, location):

Access Information (Maps, trails & trailhead):

Daily Entries (Areas surveyed (drainages, trails, UTM's) visual observations of wolves (numbers/age classes/colors), trapping effort (yes/no). UTM's of wolf locations or den sites.)

Date (MM/DD/YY):

Wolf Reports Received While on Hitch:

Coordination/Outreach Efforts (IDFG, USFS, USFWS, public):

Conclusions (Attach applicable Terrain Navigator maps):