

PLACER MINING LOCATION NOTICES

NOTICE IS HEREBY GIVEN, That James R. Taylor
 the undersigned citizen..... of the United States of America, conforming to the mining laws thereof and
 of the State of Idaho, and the local rules, regulations, and customs of miners, have this.....
 day of March 11,....., A.D. 19 55... located and do hereby claim 20
 acres of Placer Mining Ground, situate, lying and being On Goat Creek about 1/2 mi. up
from Big Creek in Goat Creek Basin.

"The Goat Creek Placer"

in Big Creek..... (unorganized) Mining District, in the County of
Valley..... and State of Idaho, particularly described as follows, to-wit:

Commencing at this monument, which is the Monument..... corner of the claim, said
 monument being corner No. 1, upon which this notice is posted; thence in a West
 direction 200..... feet to corner monument No. 2, the Southwest corner of the
 claim; thence in a North direction 2000..... feet to corner monument No. 3, the
Northwest corner of the claim; thence in a East direction 400
 feet to corner monument No. 4, the Northeast corner monument of the claim; thence in a
South direction 2000..... feet to corner No. 5, the place of beginning.

Thence West 200 ft to
 The said corner monument No. 1, upon which this notice is posted, is situated about 200
 feet in a South direction from Entrance to Goat Creek Basin & 10 ft
East of Trail.

The adjoining claims are none

The corner monuments Nos. 2, 3 and 4 aforesaid are marked upon the side facing corner monument
 No. 1, with the name of the claim and the corner which each of said monuments represents, and all of

PLACER MINING LOCATION NOTICES

NOTICE IS HEREBY GIVEN, That James P. Taylor

the undersigned citizen..... of the United States of America, conforming to the mining laws thereof and of the State of Idaho, and the local rules, regulations, and customs of miners, have this.....

day of March 11, A.D. 1955 Relocated and do hereby claim..... 18

acres of Placer Mining Ground, situate, lying and being at the mouth of Cougar Creek on
the North side of Big Creek.

"Cougar Placer"

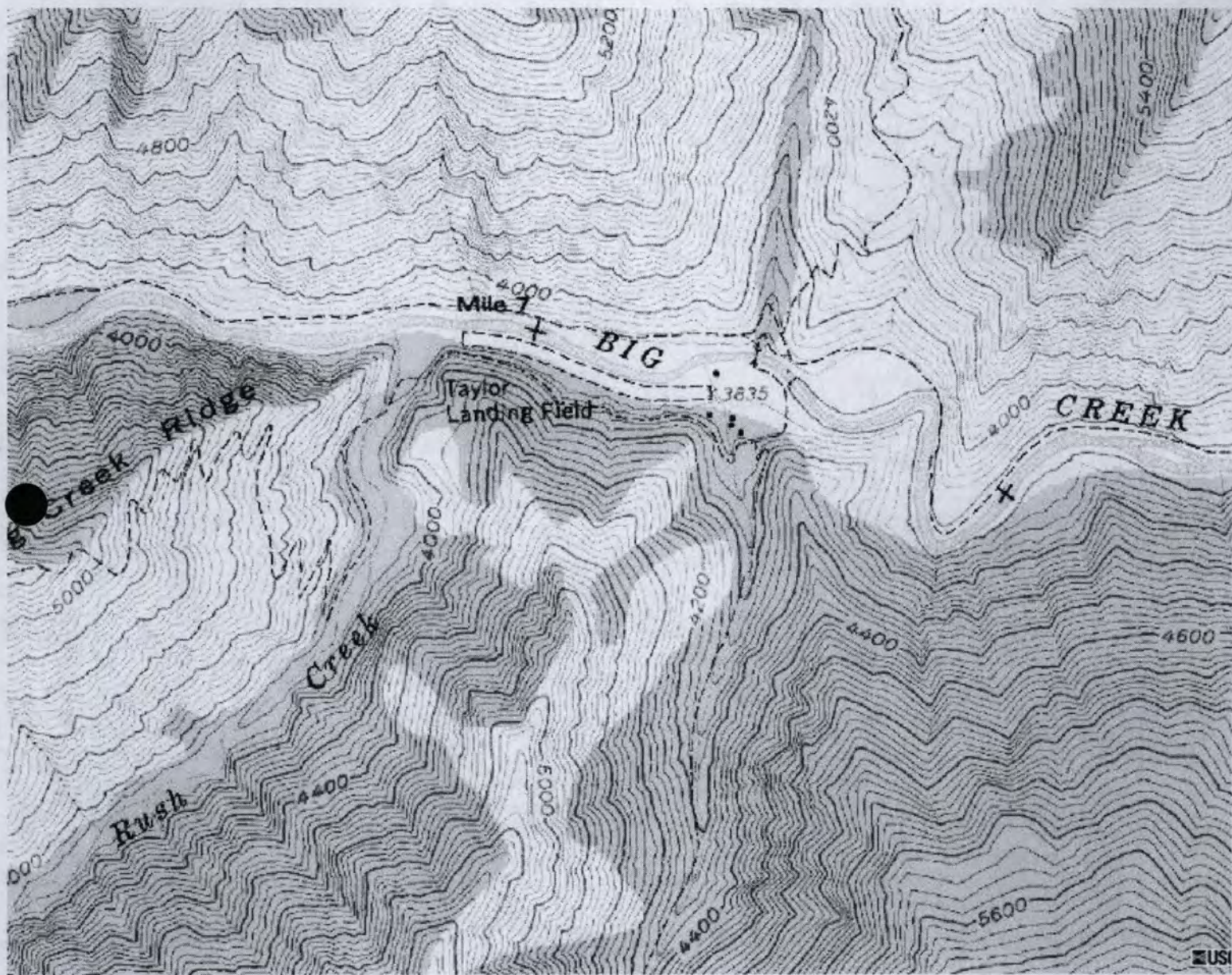
in Big Creek (unorganized) Mining District, in the County of Valley and State of Idaho, particularly described as follows, to-wit:

Commencing at this monument, which is the S.E. corner of the claim, said monument being corner No. 1, upon which this notice is posted; thence in a West direction 1500 feet to corner monument No. 2, the Southwest corner of the claim; thence in a North direction 500 feet to corner monument No. 3, the Northwest corner of the claim; thence in a East direction 1500 feet to corner monument No. 4, the Northeast corner monument of the claim; thence in a South direction 500 feet to corner No. 1, the place of beginning.

The said corner monument No. 1, upon which this notice is posted, is situated about 100 feet in a West direction from The mouth of Cougar Creek on the bank
of Big Creek

The adjoining claims are None

The corner monuments Nos. 2, 3 and 4 aforesaid are marked upon the side facing corner monument No. 1, with the name of the claim and the corner which each of said monuments represents, and all of said monuments are at least four inches in diameter and at least four feet high above ground.



LEGAL DESCRIPTION - TAYLOR RANCH

H. E. SURVEY NO. 809, embracing a portion of, approximately, Sections two and three in Township Twenty North of Range Thirteen east of the Boise Meridian, Idaho, more particularly bounded and described as follows:

Beginning at corner No. 1, from which the east quarter corner of Section one in said Township and Range, bears south eighty-nine degrees fifty-two minutes Twenty-eight Seconds east one hundred fifty-five and three hundredths chains distant; thence, south seventy-eight degrees seven minutes west twenty-two and thirty-four hundredths chains to corner No. 2; thence, south twenty-eight degrees forty-three minutes west nine ^{de} and seventy-six hundredths chains to corner No. 3; thence, north twenty-two degrees forty-three minutes west eleven and thirty-nine hundredths chains to corner No. 4; thence, north eighty-four degrees twenty-three minutes west seventeen and sixteen hundredths chains to corner No. 5; thence, north fifty-three degrees fifty-one minutes west fifteen and twenty-one hundredths chains to corner No. 6; thence, south forty degrees forty-four minutes west twenty-one and seventy hundredths chains to corner No. 7; thence, north nineteen degrees sixteen minutes east twenty-two and thirty-seven hundredths chains to corner No. 8; thence, south eighty-one degrees thirty-eight minutes east sixty-four and fifty-four hundredths chains to corner No. 9; thence, south forty-five degrees twenty-one minutes east four and sixty-eight hundredths chains to corner No. 1, the place of beginning, containing sixty-four acres and eighty-four hundredths of an acre, according to the official plat of the survey of the said land to the General Land Office by the Surveyor-General.