

Summer 2004 Lewis Woodpecker Survey

In the summer of 2003, Stephanie Jenkins completed a survey of woodpecker populations within the Big Creek drainage. This summer, Greg Hansen, Anna Pierce, and Cinnamon Robinson re-evaluated selected nest sites that had been used during Jenkins' study. Using a procedure set forth in "A Field Protocol to Monitor Cavity-Nesting Birds" (Dudley and Saab) nest sites and nest activity was documented. GPS locations differed slightly from what Jenkins had recorded, possibly due to differences in UTM settings. At site 31, Stephanie found three different nesting sites. Due to the GPS inaccuracy, her three locations were lumped into two locations in our survey. We attempted to recheck the same locations, but there may be differences in exact nest sites. We found that nesting activity occurred later in the summer than was proposed by the protocol, but more visits to the nest sites need to be completed before assessing nest successfulness. Below is a summary; recorded UTM locations are summer 2004 recordings.

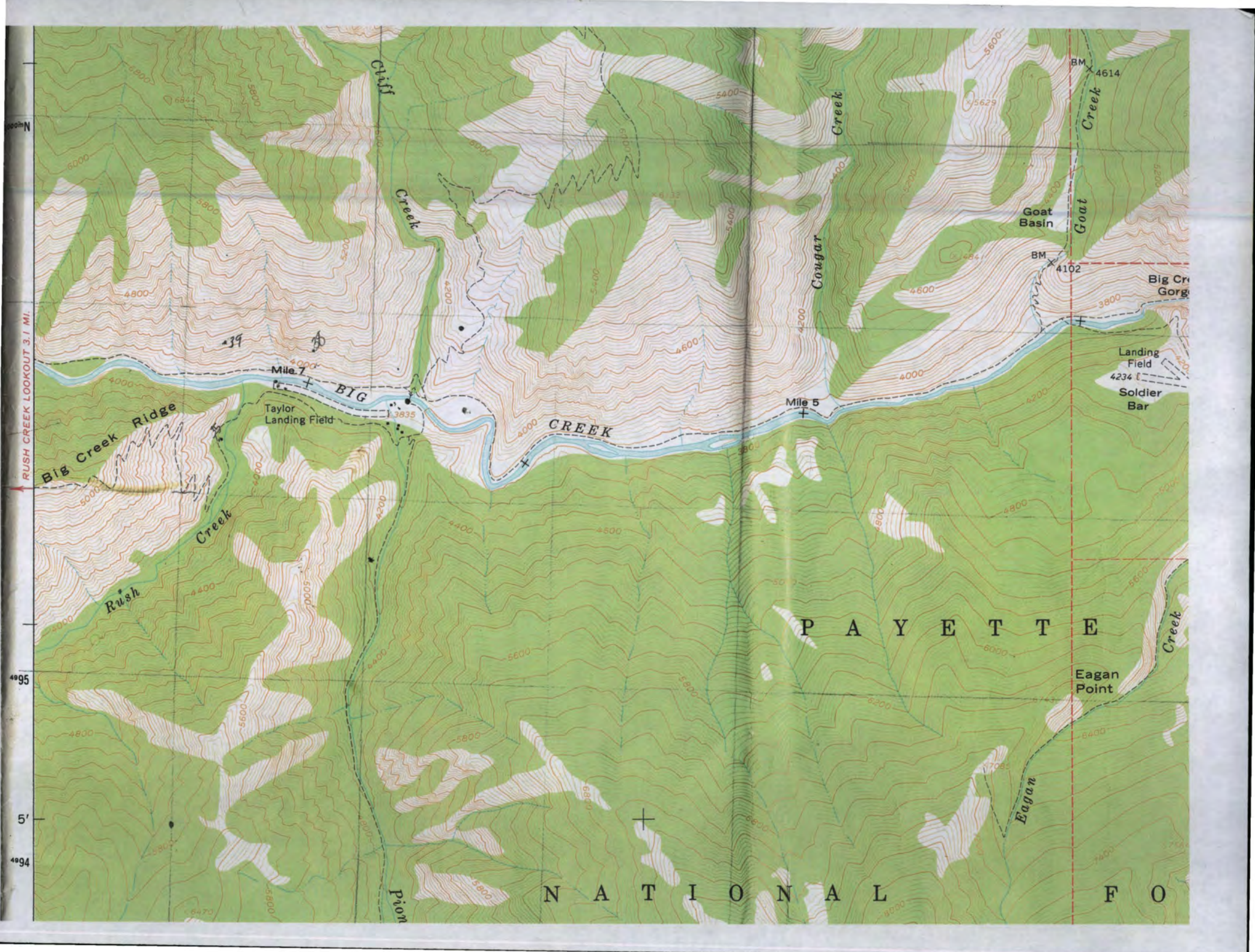
Location	UTM (NAD27)	Status	Date Visited
Cliff Creek	0669238N 4996790E	Inactive	6-14-04
30SJ	0665924N 4997177E	Inactive	6-8-04
31aSJ	0666396N 4996833E	Active- Nestling	6-8-04
31bSJ	0666514N 4996934E	Active- three possible nest sites	6-8-04
32SJ	0666809N 4996830E	Inactive	6-8-04
35SJ	0668269N 4996361E	Active- two nest sites, one with confirmed nestlings	6-14-04
36SJ	0666357N 4997100E	Inactive	6-14-04
38SJ	0668797N 4996565E	Active- one confirmed nest site, one more suspected	6-8-04

6-8-04

- 30SJ- Two POTRI snags with possible cavities, one on bank of river has obvious cavity. No LEWO sightings, no vocalization.
- 31aSJ- POTRI snag 3m from river, 50m from trail, cavity height 7m, tree height 8m.
- 31bSJ- This area may encompass two or all three of Stephanie's site 31 GPS locations. During our observation time (1.5 hours), we counted at least eight

different LEWO landing on multiple POTRI snags and one PSME snag. We also observed some courtship behavior- one LEWO was repeatedly chased from a snag but kept returning, wing displaying was common. No chirping was heard, and in conjunction with the other behavior this leads us to believe that incubation had not yet begun.

- 32SJ- LEWO observed at possible nesting tree, flew from tree-top to tree-top, returning to same POTRI snag. One lone bird, no visible excavations but many possible natural cavities. No vocalization from bird or young, never entered any cavity, foraging observed. Originally thought nest guarding a possibility, now doubt that. Tree height 35m.
- 35SJ- cavity located in the east fork of POTRI sang, 3m below where bark ends, cavity facing away from Rush Creek, and one LEWO perching and possibly nest guarding. Chirping was heard from this cavity. Tree height 20m and nest height of 15m. 1.5m west from first noted tree another POTRI had cavity. Another LEWO was observed on this tree, but never entered cavity. A hawk was observed nearby.
- 36SJ- New GPS locations were not taken for this site; the ones recorded are Stephanie's old ones. There was no activity observed.
- 38SJ- Holly Akenson helped observe this site, found one confirmed active cavity, suspect at least one more nest. Four LEWO observed. Three large POTRI snags within 12m of each other, all with obvious excavations. One with confirmed use is approximately 33m tall, with nest height of 15m, 2.5m from water's edge.
- Cliff Creek- many possible POTRI snags up this drainage, only spotted one LEWO who was foraging. Never entered any cavities, did not have preference to one tree in the area.



RUSH CREEK LOOKOUT 3.1 MI.

4996

4995

5'

4994

Cliff Creek

Creek

Creek

Cougar Creek

BM 4614

Goat Basin

BM 4102

Big Cr Gorge

Landing Field

4234

Soldier Bar

Big Creek Ridge

Mile 7

Taylor Landing Field

3935

Mile 5

BIG CREEK

PAYETTE

Egan Point

Egan

NATIONAL FOREST