



Little Women

the musical

Book by Allan Knee, Lyrics by Mindi Dickstein

Music by Jason Howland

Based on the novel by Louisa May Alcott

Directed by Ricky Kimball

FREE for
U of I
Students

Hartung Theater 625 Stadium Dr. Moscow

7:30 pm, December 6, 7, 12, & 14

2:00 pm, December 8, 14 & 15

Tickets: \$6-\$22 at Bookpeople or call 208-885-6465



University of Idaho
Department of Theatre Arts

INFO: www.uitheatre.com | #UITheatre

Little Women is presented by special arrangement with Music Theatre International (MTI).
All authorized performance materials are also supplied by MTI. www.MTIShows.com

Under A Big Sky

by Randy Reinholz
(Choctaw)

a staged reading
directed by Craig A. Miller



presented
in partnership
with

**NATIVE
VOICES**
AT THE AUTRY



University of Idaho
Department of Theatre Arts

America's Leading
Native American
Theatre Company

MESSAGE FROM THE PLAYWRIGHT

Ut omnimil inctius velic tempores peritium nulliquide se-
quisimus autemolorepe pror sim esequ poreper ferferu
nditiunt, quam reperci aecaectatur sedignam, tet magnit
mi, natus modit modicteturio cus.

Estia dem ut assimus. Hil et a vel iumene num fugiae. Ut
fuga. Agnaten impore corporunt incto te sa solentu ribus.

Pideliquo eost asitem fugitaq uiscidellore sequi uta sum que nos ven-
ditat dolorrum eum, nihitate dolorpor accae re molento volore im et re
coremlpsapide ribearcitio estibus.

Tatem repudam, consedi ut acest andipsandi int.

Bitam, odi nem es secus nam veliandem re delesto cum facid ut illabor
repe voloremportum dolum faceper istio. Ima voloremEvellorem faccus
et quoditatiist alia que volor rerem vellupt atibus, ut erissimaghi blaut
pa sum cori beatiunt quaerum exerempore, es nem qui rerum repudio
temo optam volluptur?



Message from the Chair, Department of Theatre Arts

Harci cus sus quia consequaspis et optiam ent velictatent
optat ant, officit exeroreprem as exeriae nobist et iliberum
et parum rera seque paruptiant est pero magnimi, quae
voloreicium ut et vidiorestis mi, offic temquas acerumet
utem re nihiliaerio blatectempos estest, nem. Agnam
ium exeraeRemqui di ipiendit dipidia turerum quuntur
ibusdae am quo in rem que re cum aut eventi delibus
andendit adia simporum, qui omnia dolorporatum simillam, ut fuga.
Ore simolorest qui in cone porem repratem reicita quas volupta tenest
exped explab ipid mincimincia consero consequ plabor magnatum
doluptatur aut et labore iliaes maxim quiam nimporp oriatus estem
aspella nam aliquis inulparum nobitam fuga non pa pa prae pliqui aut
ulparia spelitae sum fuga sit, ut faccumArionse et aut enis dolum qui
dolest eum que sus delis alicitatia sit, offictas ent eum, quo est, ex-
cesed iatiumque pliquun ducitaspic tem quia estistr untustis eatest, te
net es nimet verum, qui alistota valoribus.



Namet maio et ipsam faciuntem sus quiant aut aliqui cum sequide lit

Your Gift Makes A Dramatic Difference

Our theatre students are bright, successful and want to change the world, one story at a time. Help them become the next generation of fearless artists with a tax-deductible gift to the UI Theatre Arts program or to one of our many theater scholarships.

Make a secure, online gift today by visiting uidaho.edu/give.

Continued from previous page

1990, 1991 and on “One Life to Live” as Blaine Adams, 1991. She received the Regional Irene Ryan Scholarship in 1995. Since then she has appeared in numerous films and plays. In 2016, Kelly was honored with the National KCACTF, Special Achievement in Performance as Medea in “Medea: Her Story.” She is the first ever Uta Hagen Teaching Award recipient presented and sponsored in April, 2019, by the College of Fellows of the American Theatre. In 2018 she was the Moscow Mayor’s Arts Award recipient for Outstanding Achievement in Arts Education.

ABOUT THE ARTISTIC TEAM



RANDY REINHOLZ, (Playwright)(Choctaw) co-founder and Producing Artistic Director of Native Voices at the Autry is an accomplished producer, director, actor and playwright. His play, *Off The Rails*, was produced in 2015 at the Autry and in 2017 at Oregon Shakespeare Festival, Bill Rauch directing. Under *A Big Sky* was workshopped at the Seven Devils Playwrights Conference. He has produced and directed over 75 plays in the United States, Australia, Mexico, Canada, and Great Britain. He is a Professor at San Diego State University, where he has served as Head of Acting, Director of the School of Theatre, Television, and Film, and Director of Community Engagement and Innovation. He was recently honored with the Ellen Stewart Career Achievement Award from ATHE (Association of Theatre in Higher Education).

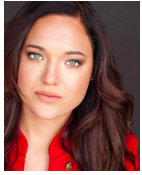


CRAIG A. MILLER (Director) is the Head of Directing and Assistant Professor of Acting and Directing at the University of Idaho Theatre Arts Department. Miller holds an M.F.A. in Theatre from the University of South Carolina, Columbia, and a B.S. in Theatre from Illinois State University. Miller is the former Artistic Director and Education Director at 6th Street Playhouse in Santa Rosa, California, where he produced several award-winning seasons from 2011-2018. Prior to that, he founded Houston’s Texas Repertory Theatre and served as its artistic director for seven years. He has also worked as the casting associate for The Shakespeare Theatre of New Jersey, is the past artistic director of the Clinton Showboat Theatre in Clinton, IA, and was the founder/artistic director of Chicago’s East Window Theatre Company. He is an award-winning director of over 150 productions at regional theatres across the country, an accomplished sound designer, and arts educator, having taught acting and directing at the University of South Carolina, The 6th Street Playhouse School of Drama, and Houston’s Lone Star College System.

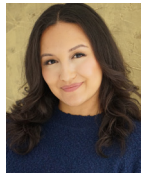


JEAN BRUCE SCOTT, (Producer) co-founder of Native Voices at the Autry and Producing Director Emerita, has spent over 25 years developing new plays, including more than 200 by Native American playwrights. For Native Voices she has produced 26 plays (including 22 world premieres) in 39 productions, 24 New Play Festivals, 8 Short Play Festivals, 15 Playwrights Retreats, numerous national and international tours, more than 230 workshops and over 275 play readings. In 2014 Scott was instrumental in formalizing the Native Voices Artists Ensemble to mentor and support outstanding and promising Native American actors, directors, writers, and producers. She has received a McKnight Fellowship, a MAP Grant, Playwrights Arena’s Lee Melville Award, and serves on the Leadership Board of the Theatrical Producers League of Los Angeles, Large Theatres, and is a member of the National Theatre Conference, New York.

ABOUT THE CAST



SAMANTHA BOWLING (Cherokee) / LIZ LEAF is a writer and actress whose credits include several indie feature films: Back to Awesome, Syfy's Tomb Invaders, and Lifetime Movie Network's Psycho Brother in Law. Television credits: MBC's Cut, Dirty Laundry, as well as various internet comedy shorts. She performs stand up, improv and sketch comedy around Los Angeles, and is a Native Voices at the Autry Artists Ensemble Member, and a founding member of Chrysalis Pictures Productions. She also writes music and performs aerial arts.



CHARLEY FLYTE (Lakota/Mohawk) / **RONNIE** is an actor and writer based in Los Angeles. She studied Film at the John Hopkins University, acting at the T. Schreiber Studio, and improv at UCB. Favorite credits include Rosie in Rush; The Operator in The Absentee; and Queen Titania in A Midsummer Night's Dream. She is member of the Native Voices at the Autry Artists Ensemble, and a 2019 Finalist for the Sundance Native Filmmaker Fellowship Lab.

SHEILA TOUSEY (Menominee/Stockbridge-Munsee) / **VELMA LEAF** is in her third season in the



Acting Company of the Oregon Shakespeare Festival: As You Like It; Between Two Knees; Othello; Manahatta; Julius Caesar; Off the Rails. Broadway: In the Summer House (Lincoln Center). Off-Broadway: The Late Henry Moss (Signature Theatre); Iphigenia and Other Daughters, The Scarlet Letter (Classic Stage Company); Rez Sisters (New York Theatre Workshop); Woyzek (The Public Theater). Regional: Our Town (Chautauqua Theater Company); Mad River, Alchemy of

Desire (Cincinnati Playhouse); Master Butchers Singing Club (Guthrie Theater); Carbon Black (Native Voices at the Autry); The Late Henry Moss (Magic Theatre); Tongue of the Bird (Intiman Theatre); Antigone in New York (Arena Stage); Slavs (Berkeley Rep); Buz'gem Blues (Trinity Rep); Baby Blues (Pennsylvania Center Stage). Film/TV: This So-Called Disaster, Christmas in the Clouds, Backroads, Wildflowers, Ravenous, Sparkler, Lord of Illusions, Silent Tongue, Thunderheart, Law & Order, Law & Order: SVU, Coyote Waits, A Thief of Time, Skinwalker, The X-Files, Grand Avenue, Slaughter of the Innocents, Medicine River.

KALANI QUEYPO (Blackfeet, Hawaiian) / **GIL BENSON** is a founding member of SAG-AFTRA's



National Native American Committee and serves on the Advisory Council for Native Voices at the Autry. Kalani can be seen in the Oscar-nominated, Terrence Malick film, The New World; Steven Spielberg's Emmy Award winning mini-series Into the West and Slow West (Sundance GRAND JURY PRIZE). Television credits include Fear the Walking Dead, Mad Men, Nurse Jackie, Bones, Hawaii Five-0, and a critically acclaimed performance as Squanto in Saints & Strangers. Kalani is currently shooting a third season of Jamestown with the producers of Downton Abbey.

KELLY QUINNETH / **SUNSHINE KING** Kelly Eviston Quinnett is a professor and head of acting



at the University of Idaho and the current past chair of Region 7 Kennedy Center American Theatre Festival. In 1990, she was the recipient of the National Irene Ryan Scholarship presented by the Kennedy Center American College Theatre Festival, which led to her being placed under a development contract with ABC. She appeared on "All My Children" as Maria Monterey in

Coming Soon!

2020 Spring Season

Deep Calls by Kendra Phillips | directed by KT Turner

Feb. 7-16, 2020 | The Forge Theater

The story of a young woman trying to leave and heal from a life in prostitution. We follow Carson on a moving journey toward restored identity and self-worth as she journals her experiences as a fairy tale adventure, not ready to face some events. For mature audiences.

The Moors by Jen Silverman | directed by Lennie Dean

Mar. 6-15, 2020 | The Hartung Theater

Two sisters and a dog live out their lives on the bleak English moors, and dream of love and power. The arrival of a hapless governess and a moor-hen set all three on a strange and dangerous path. "The Moors" is a dark comedy about love, desperation and visibility.

You Can't Take It With You by Moss Hart & George

S. Kaufman directed by Craig A. Miller

April 24-May 3, 2020 | The Hartung Theater

One of the most popular plays of modern time, an eccentric family allows each member to pursue his own ambition in the home, but their routine is disrupted when a daughter with a regular job wants to bring her fiancé and his Wall Street family to dinner. A Pulitzer Prize-winning comedy.

University of Idaho Theatre Arts Faculty

Robert Caisley, Chair
Michael Brandt
Sarah Campbell
Jesse Dreikosen
David Harlan
Ann Hoste
David Lee-Painter
Chian-ann Lu

Craig A. Miller
Dean Panttaja
Ginger Sorensen

Emeritus
Fred Chapman
Ed Chavez
Stephanie Miller
Forrest Sears

ABOUT NATIVE VOICES AT THE AUTRY

Founded in 1994 by Producing Artistic Director Randy Reinholz (Choctaw) and Producing Executive Director Jean Bruce Scott, Native Voices at the Autry became the resident theatre company at the Autry Museum of the American West in 1999.

It is the only Equity theatre company devoted exclusively to developing and producing new works for the stage by Native American, Alaska Native, and First Nations playwrights.

The company provides a supportive, collaborative setting for Native theatre artists from across North America and is committed to putting Native narratives at the center of the American story in order to facilitate a more inclusive dialogue on what it means to be American.

In 2014 the company established the Native Voices Artists Ensemble to more fully support the extraordinary talents of its Native actors, writers, musicians, directors, designers, and producers.

The Ensemble is devoted to developing new work in a collaborative process as well as supporting Native Voices' ongoing focus on the work of individual playwrights.

Native Voices was the resident theatre company at the Tony Award-winning La Jolla Playhouse 2016-2018; is a member of Actors' Equity Association, LA Stage Alliance, and the Dramatists Guild; an associate member of the National New Play Network; and a Constituent Theatre of Theatre Communications Group (TCG), the national organization for the American theatre. Visit TheAutry.org/NativeVoices for more information.

**NATIVE
VOICES**
AT THE AUTRY

Under A Big Sky

Written by Randy Reinholz (Choctaw)

Directed by Craig Miller

Producer.....Jean Bruce Scott
Dramaturg.....Robert Caisley
Stage Manager.....Grace McGreevy

Cast (in order of appearance)

Liz Leaf.....Samantha Bowling
Velma Leaf.....Sheila Tousey †
Sunshine King.....Kelly Quinnett
Ronnie Watts.....Charley Flyte
Gil Benson.....Kalani Queypo †



†Member of Actors' Equity Association, the Union of Professional Actors and Stage Managers in the United States

SPECIAL THANKS

*The Autry Museum of the American West,
Elisa Blandford, Robyn Hetrick, Jeni Mahone,
The Seven Devils Playwriting Conference.*