

Day - NW  
SD  
421  
P68a  
1963/64



**1963-64  
COMBINED  
ANNUAL  
REPORT**

# **P T P A**

**Potlatch Timber Protective Association**



**60th Year of Cooperative Forest Protection  
State – Federal – Private**

# Official Directory

## Potlatch Timber Protective Association

1963 and 1964

### OFFICERS

George W. Beardmore, *President* ..... Lewiston, Idaho  
Roger L. Guernsey, *Vice-President* ..... Boise, Idaho  
Adrian G. Nelson, *Secretary-Treasurer* ..... Orofino, Idaho  
A. B. Curtis, *Chief Fire Warden* ..... Orofino, Idaho  
M. O. Koppang, *Ass't Chief Fire Warden* ..... Orofino, Idaho

### DIRECTORS

George W. Beardmore ..... Lewiston, Idaho  
Roger L. Guernsey ..... Boise, Idaho  
R. G. Sackerson ..... Seattle, Washington  
Jack Mead ..... Juliaetta, Idaho  
Bruce Colwell ..... Coeur d'Alene, Idaho

### COMMITTEE ON FIRE PROTECTION

George Rauch, *Chairman* ..... Lewiston, Idaho  
Roger L. Guernsey ..... Boise, Idaho  
Bruce Colwell ..... Coeur d'Alene, Idaho

### AUDITING COMMITTEE

Roger L. Guernsey, *Chairman* ..... Boise, Idaho  
Bruce E. Colwell ..... Coeur d'Alene, Idaho  
W. G. Cochran ..... St. Maries, Idaho

### LEGISLATIVE COMMITTEE

Roger L. Guernsey, *Chairman* ..... Boise, Idaho  
Jack Mead ..... Juliaetta, Idaho  
George Rauch ..... Lewiston, Idaho

Day - Nov  
SD  
421  
P68a  
1963/64



**Woods foreman, foresters and industry people meet with Association protection leaders to discuss the problems of fire protection each spring. This Industry-Association conference has paid big dividends in recent years in working out much detail to provide smooth action and cooperation in the work of fire protection. In 1964 nearly 150 persons turned out for the conference.**

## 1963-1964 Report of the Chief Fire Warden

Orofino, Idaho  
November 30, 1964

Officers and Directors:

### POTLATCH TIMBER PROTECTIVE ASSOCIATION

I respectfully submit my annual reports for the period of November 30, 1962, to November 30, 1963 for the 1963 season and the period of November 30, 1963, to November 30, 1964, for the 1964 season.



**LAND BOARD SPEAKERS**—In 1963 the CTPA-PTPA sponsored a forest tour to show resource values both public and private, the matters of interest. The program during the 1963 tour featured outstanding persons shown above. Left to right: Bud Merriman, Manager, NP Railway Land Dept.; Colonel James Beddow, Army Corp of Engineers; Elton McQuery, Counsel, States Governments, San Francisco; Roger Guernsey, State Forester; John Carver, Asst. Secty. of the Interior; Eugene Taylor, County Assessor, Latah County Idaho; Ernie Woletz, Dean, College of Forestry, U of I; William Johnston, Managing Editor, Lewiston Tribune; and A. B. Martin, Pacific Northwest Power Co. (not shown).

## FIRE SEASON

The 1964 fire season followed a winter of above normal snowfall with more than average precipitation throughout the fire season. Records taken at the Elk River weather station show 8.26 inches of rainfall during June, July and August, as compared to the 37-year average of 4.08 inches for the same period. September precipitation was 1.76 inches, very near the 37-year average of 1.72 inches. During the usual critical fire season months there was 100% more precipitation than average. The longest period without rainfall occurred during a 10-day period in the latter part of June and the first part of July. During the last 37-year period only one other year, 1948, exceeded this year in the amount of precipitation for the three month period where 10.81 inches was recorded as compared to 8.26 inches this year. With this well distributed rainfall in above normal amounts the fire season for 1964 was well below normal in length and severity than preceding fire seasons. Vegetation remained green, throughout the fire season.

The first fire of the season was on June 26 in the Boehl's Cabin area. Only two definite storm periods occurred during the fire season. The first was in mid-July and started ten fires on the Association area. All were quickly contained and resulted in no merchantable timber loss. The second storm period occurred in mid-August and lightning started ten fires, all but one of which were limited to less than  $\frac{1}{4}$  acre. The Gold Butte No. 2 fire was set by lightning near the top of a ridge and quickly spread to several acres before protection crews arrived. This fire burned in a cut-over area and part of a recently used log landing but there was no damage to merchantable timber. The last fire of the season occurred on September 29 as a result of debris burning. During the 1964 season 29 fires occurred, with 25 started from lightning and 4 from other sources. Our annual average acres burned for the past twenty years is 98.45, as compared to  $2\frac{1}{2}$  acres this season. The average number of fires expected is 62, as compared with 29 fires this year. The two distinct lightning storm periods accounted for 69% of all fires, while the remaining 31% were generally scattered throughout the month of July.

In summarizing the 1964 season, it was one of the wetter seasons with less storm activity than normal.

## COMMUNICATIONS

Our communications continue to improve with additions of new equipment and improvements in the use of existing equipment. Radio has generally replaced ground line telephones. Only two main telephone lines were maintained and operated during fire season. These are as follows: (1) Elk River-Boehl's Cabin line which also serves our main observation

tower, Elk Butte, and (2) Boehl's Cabin-Freezeout Lookout line. Having two detection points with radio and telephone service increases our efficiency in advent of radio failure. Many miles of our abandoned telephone lines were removed this year.

In the operation of modern radio communication equipment, electrical power at our major detection points is all important. This year a light duty power line was constructed to Mason Butte Lookout. Through a cooperative arrangement, power was made available at McGary Butte Lookout. Elk Butte, our main radio relay station, has had electrical power and a stand-by power plant for several years.

With our communications radio link with industry we are continuing to inform operators of weather forecasts and other information pertaining to forest protection.

### IMPROVEMENTS

The 1964 fire season, being generally easier than normal, gave an opportunity to accomplish several improvements. When crews were not on fires they were kept busy on improvement projects as follows: (1) Construction of an addition to the main shop at Elk River. This will facilitate the consolidation of buildings, as the removal of several buildings is



**FIRE SCHOOL**—New employees of the CTPA-PTPA are gathered for fire training, tool use, safety and other subjects to develop our new employees into their greatest potential. A week training program is usually planned. This also helps to better know the ability of our new workers and tends to help them in the work they are best adapted for.

planned for the future. (2) Construction of a winter-time entrance way into the Radio Relay Station at Elk Butte. A cement block building was constructed on top of the existing underground radio facility, giving additional room and an easier winter access. (3) Fire protection roads were constructed in the Mary Mix-Pinchot Butte area and in the area west of McGary Butte. (4) A power line was constructed to Mason Butte Lookout.

### SLASH DISPOSAL

Slash Disposal operations were carried on by the Potlatch Forest Protective District as provided in House Bill 80, Chapter 74, of the 1945 Idaho Legislature.

With generally an easier than normal fire season slash disposal work progressed rapidly this season. Slash disposal work and forest protection crews are housed and fed in the same camps. The following gives some information as to the slash operations by areas within the Association:

(1) Elk River area operates with one 8-man crew, with one foreman and one D-6 dozer, which was shared with the Bovill-East Fork operation.

(2) Boehl's area had one 6-man crew with one foreman and one D-6 dozer on slash disposal.

(3) Mason Butte-Park area operated with one 2-man dozer crew, one foreman and a part-time 5-man slash crew.

(4) Bovill-East Fork area used one 5-man slash crew with one foreman and one D-6 dozer, the dozer being shared with the Elk River operation.

Personnel in the Bovill-East Fork area and in the Mason Butte-Park area were hired locally. In the Boehl's and Elk River areas slash personnel were boarded in the Association camps.

### DWORSHAK DAM PROJECT

The 87th United States Congress authorized construction of the Dworshak Dam, formerly named Bruce's Eddy Dam. Congress changed the project name to Dworshak Dam, honoring the late Senator Henry Dworshak, who was instrumental in securing the project.

The Dworshak dam will create a 16,970-acre lake between the Potlatch and Clearwater Timber Protective Associations areas and will inundate several miles of forest protection roads, bridges, the Boehl's Cabin camp protection facility and two air strips along the river. Negotiations with the Army Engineers are in progress to protect the interests of the Association in these facilities. All these items are vital to protec-

tion, management and care of the forests in this area. Negotiations will continue with the Army Engineers to insure the best possible transportation routes, air strips, bridges and camp facilities that can be provided.

### CONCLUSION

The 1963 legislature amended the fire laws to provide a closed fire season May 10 to October 20. This change from May 1 to October 31 came about as a result of cattlemen and other interests who wished liberalization of free burning time. Forestry interests concurred in the desire for more satisfactory dates and in the interest of greater cooperation and greater harmony. I hope that Idaho now has a more satisfactory fire season and I am sure it has if all interests will work together and consider the best interests of all.

We have worked very hard to provide a high degree of inspection and aid to those who desire burning permits. I am pleased to report that no incidents of careless burning occurred the past two years. There were 27 burning permits issued during the 1964 season. This number is less than in previous years. This is primarily because most of the land clearing and cleaning up of old logging areas has now been completed on this Association. No permits were refused because of unsafe conditions but the Association cooperated with one



**DWORSHAK DAM CLEARING**—Early stages of construction at the Dworshak Dam site in 1964 included the clearing work. Above can be seen the first clearing project. Many miles of up-stream forested hill sides remain and it will take several years for completion. The Association has entered into a contract with the Army Engineers to assist them in some of the work and with fire regulations.



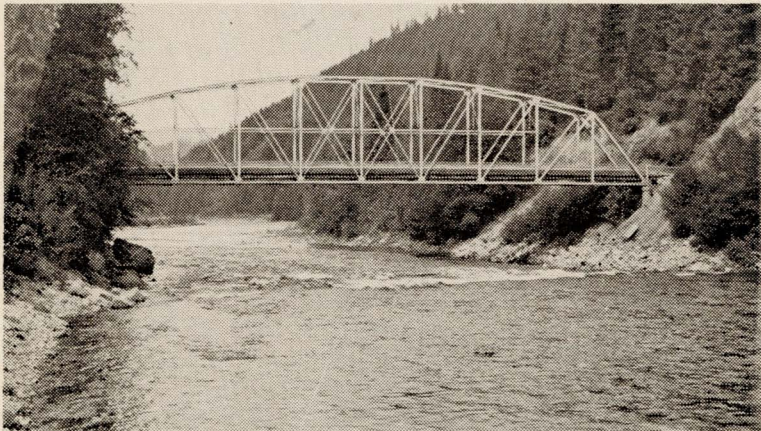
rancher by furnishing a tanker truck as stand-by. Burning permits were issued as follows:

1964	Logging Slash	Land Clearing	Grass & Stubble	Debris Burning	TOTAL
Spring .....	1	3	0	0	4
Fall .....	5	9	3	6	23
TOTAL .....	6	12	3	6	27

Through the years as more machines are used in the woods for logging, construction and other purposes we have more fire in and around the areas of equipment use. Many of these fires are hard to put out and are very costly. As more gasoline powered machinery is used, such as power saws, tractors, loaders, trucks, etc., it is only natural that more fires will occur.

We must improve spark arrestor equipment and be sure that it is in good condition at all times while in the forests. Increased exposures increases the incidence of fires. During the past year a greater effort was made to improve spark arrestor equipment and the cooperation was gratifying. We have weakness, however, on the part of some who are not prone to fully comply and in my opinion, stronger teeth are needed in our spark arrestor laws.

I wish to thank our many cooperators for making 1964 a very successful season.



**BENTON CREEK BRIDGE**—This 200 feet span across the North Fork of the Clearwater river near the mouth of Benton creek was built by the Clearwater Timber Protective Association in 1934. It is an important river crossing connecting many thousands of acres of forest land. The bridge will be 100 feet under water when the Dworshak Dam is completed. Army Corps of Engineers have a crossing planned at a higher location to keep this important facility.

**REPORT ON BLISTER RUST CONTROL OPERATIONS  
ON THE POTLATCH TIMBER PROTECTIVE  
ASSOCIATION**

**1963 - 1964**

**by**

**U. S. F. S.**

Blister rust control work on state and private lands within and adjacent to the Potlatch Timber Protective Association during 1963 and 1964 included the eradication of ribes, hand antibiotic treatment of immature white pine, and the aerial antibiotic treatment of pole and mature white pine stands.

A 30-man ribes eradication camp was located on the East Fork Potlatch Creek near the mouth of Bob's Creek during the last two field seasons. Crewmen eradicated ribes from high value white pine lands near Badger Meadows and Mallory Creek. The ribes eradication work was necessary on the recently logged lands to protect the white pine seedlings from severe blister rust infection until the stand becomes old enough (at least 10 years) for effective antibiotic treatment.

Antibiotic treatment crews used the antibiotic, Actidione, to hand treat immature white pine on state and private lands in Moose Creek, Feather-Porcupine, Nat Brown-Purdue, and Clarkia units during 1963 and 1964.

Helicopters were used to apply the antibiotic, Phytoactin, to high value white pine pole stands on state and private land in the following units: North Fork Palouse, South Fork Palouse, Big Sand, Little Sand, Strychnine, Cedar-Blair, West Fork Merry Creek, Clarkia, Keeler, Anthony, Flewsie-Gramp, Big Creek, Feather-Porcupine, West Fork Potlatch, Moose Creek, Nat Brown-Purdue, and Breakfast Creek.

An aerial antibiotic spray unit located at Clarkia used helicopters to treat 2,037 acres of white pine pole stands on private land in the Cedar-Blair unit during June, 1964. The financing of this project included \$10,000 from the State of Idaho pest control fund and \$10,000 Federal matching money.

During September, 1964, two helicopters were used to apply Phytoactin to 1,200 acres of state owned mature white pine on Breakfast Creek near the mouth of the Floodwood drainage. The mature white pine is about 120 years old and only moderately infected with blister rust. The aerial antibiotic treatment of this selected stand is expected to control most of the present blister rust infection and may also provide some immunity against early re-infection.

The planned 1965 blister rust control program on state and private lands will be concentrated in the Elk River area. Both hand and aerial antibiotic treatment will be used to control blister rust on white pine reproduction and pole stands in the Butterfield, Cameron, Elk River, Lone Meadow, Oviatt, Bull Run, and Burnt Creek units.

The blister rust control workers in the Cooperative camps were trained in fire suppression work in 1963 and 1964. Although 1963 had a high fire frequency, a few blister rust control man-days were spent on actual fire suppression. The cool and wet summer of 1964 also resulted in a minimum amount of blister rust control fire activity.

#### COOPERATIVE BLISTER RUST CONTROL FUNDS

Year	Federal Funds	State Funds	Private Funds	Total
1963	\$47,956*	\$27,506	\$9,560	\$85,022
1964	50,501*	33,747	8,755	93,003

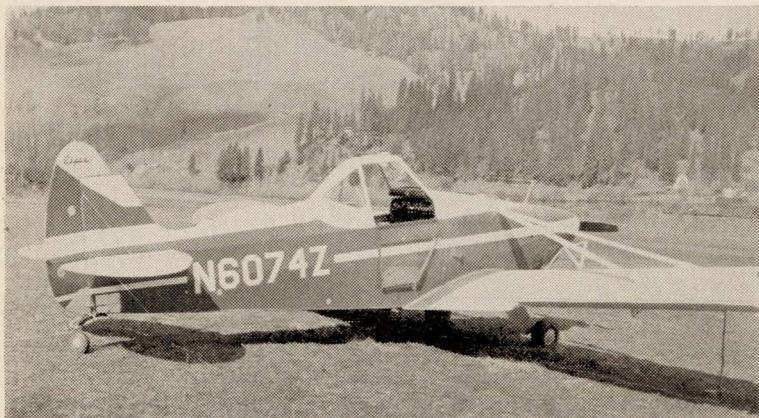
\*Includes cost of supervision.

#### RIBES ERADICATION ACCOMPLISHMENT

Year	Men Employed	Acres Worked	Man Days	Ribes Destroyed
1963	40	1,850	1,740	89,600
1964	30	1,630	1,294	86,900

#### ANTIBIOTIC TREATMENT

Year	Men Employed	Acres (Hand Treatment)	Acres (Aerial)	Man-Days	Trees Treated
1963	70	1,490	2,330	779	360,300
1964	50	1,810	6,550	793	429,900



**NEW AIRPLANE**—This Piper Pawnee airplane was secured through surplus property channels during 1964. The Piper Pawnee was used during the fire season as a fire patrol plane.

DETAILED STATEMENT OF FIRES—1964

No.	Name	Date	Acres	Sub. Div.	S	T	R	Land Owner	Cause	Type of Land	Damage
1	Kuykendall Creek	6-26-64	Spot	SWNW	32	42N	4E	Potlatch Forests	Lightning	Mer. Timber	None
2	Roadside	7- 2-64	Spot	SESW	12	41N	5E	State of Idaho	Lightning	Mer. Timber	None
3	Clug's Jump Off	7- 1-64	Spot	SENE	12	41N	5E	State of Idaho	Lightning	Mer. Timber	None
*4	Baumgardner	7- 4-64	Spot	SENE	2	37N	1E	Olson Ranch Co.	Debris Burn	Cut Over	None
5	Goat Creek	7- 6-64	Spot	SWSW	7	42N	5E	State of Idaho	Lightning	Mer. Timber	None
6	Fisher Creek	7- 7-64	Spot	NWSE	31	39N	3E	U. S. F. S.	Logger	Cut Over	None
7	Swimming Hole	7-14-64	Spot	NWNE	26	40N	2E	Potlatch Forests	Lightning	Reproduction	None
8	Shake Mill	7-14-64	Spot	NENW	26	40N	2E	Potlatch Forests	Lightning	Reproduction	None
9	Grice Ridge	7-15-64	Spot	SENE	28	42N	3E	U. S. F. S.	Lightning	Cut Over	None
10	Camp 41	7-14-64	Spot	SENE	1	39N	2E	Potlatch Forests	Lightning	Reproduction	None
11	Short Cut	7-14-64	Spot	SWNE	1	41N	3E	Potlatch Forests	Lightning	Cut Over	None
12	Reed Place	7-14-64	Spot	NWSW	14	38N	1W	Harold Breeden	Lightning	B.O. & Grass	None
13	Windy Pt.	7-14-64	Spot	SENE	25	41N	2E	U. S. F. S.	Lightning	Mer. Timber	None
14	Gold Butte No. 1	7-14-64	Spot	SESE	29	40N	4E	U. S. F. S.	Lightning	Mer. Timber	None
15	Trapper Peak	7-15-64	Spot	SWNE	32	42N	4E	U. S. F. S.	Lightning	Mer. Timber	None
16	Meadow Creek	7-15-64	Spot	SENE	18	41N	5E	Potlatch Forests	Lightning	Mer. Timber	None
17	Feather Creek	7-23-64	Spot	SWNE	27	42N	1W	Milwaukee Land Co.	Lightning	Mer. Timber	None
18	O'Donnell Saddle	7-28-64	Spot	SESE	18	42N	5E	State of Idaho	Lightning	Mer. Timber	None
19	Cedar Creek	8-17-64	Spot	NESW	35	42N	5E	State of Idaho	Lightning	B.O. & Grass	None
20	Gold Butte No. 2	8-17-64	2½	NWSW	26	40N	3E	Milwaukee Land Co.	Lightning	Cut Over	None
21	Gold Butte Landing	8-17-64	Spot	SWSW	26	40N	3E	Milwaukee Land Co.	Lightning	Cut Over	None
22	Haights Meadow	8-22-64	Spot	SWSE	19	38N	1E	Potlatch Forests	Lightning	Cut Over	None
23	Ridge Fire	8-18-64	Spot	SWSW	26	40N	3E	Milwaukee Land Co.	Lightning	Cut Over	None
24	Gold Hillside	8-18-64	Spot	NWSW	26	40N	3E	Milwaukee Land Co.	Lightning	Cut Over	None
25	Bark Camp	8-18-64	Spot	NWNW	13	40N	3E	Diamond National	Lightning	Reproduction	None
26	Windy Peak	8-18-64	Spot	SWNE	16	42N	3E	U. S. F. S.	Lightning	Reproduction	None
27	Gold Creek Bank	8-18-64	Spot	NWNW	23	40N	3E	Diamond National	Lightning	Reproduction	None
28	Round Meadow Ck.	8-18-64	Spot	NWSE	28	40N	1E	U. S. F. S.	Lightning	Mer. Timber	None
29	Weaver	9-29-64	Spot	NWSE	28	39N	1W	Lester Weaver	Debris Burn	B.O. & Grass	None

\*—Outside Association Boundary



**PRESENT BOEHL'S CABIN CAMP**—Protection headquarters at Boehl's Cabin will be under 100 feet of water with the completion of the Dworshak Dam in 1971. This forest headquarters has been in existence since 1905 and its re-location to high ground is planned. The new location is placed at approximately one mile up Breakfast creek at an elevation of approximately 25 feet above the lake that will be created. (See below.)



**New Boehl's Cabin site.**

## WEATHER INFORMATION

Observations taken at P.T.P.A., Elk River, Idaho—1964

Date	Prec.	Monthly Totals	Totals Carried Fwd.	Prec. During Fire Season
<b>May</b>				
1	.09		.09	
2	.10		.19	
3	.16		.35	
4	.40		.75	
5	.11		.86	
10	.12		.98	
11	.02		1.00	
13	.35		1.35	
17	.13		1.48	
23	.35		1.83	
28	.01		1.84	
May Total		1.84		
<b>June</b>				
2	.13		1.97	.13
4	.03		2.00	.16
5	.08		2.08	.24
6	.11		2.19	.35
7	.37		2.56	.72
8	.80		3.36	1.52
9	.10		3.46	1.62
11	.37		3.83	1.99
12	.01		3.84	2.00
14	.04		3.88	2.04
16	.34		4.22	2.38
17	.13		4.35	2.51
18	.25		4.60	2.76
19	.05		4.65	2.81
21	.41		5.06	3.22
June Total		3.22		
<b>July</b>				
2	.02		5.08	3.24
5	.09		5.17	3.33
9	.05		5.22	3.38
15	1.47		6.69	4.85
18	.03		6.72	4.88
21	.01		6.73	4.89
29	.03		6.76	4.92
30	.31		7.07	5.23
31	.31		7.38	5.54
July Total		2.32		
<b>August</b>				
1	.27		7.65	5.81
2	.22		7.87	6.03
5	.02		7.89	6.05
18	.38		8.27	6.43
19	.58		8.85	7.01
26	.25		9.10	7.26
27	.04		9.14	7.30
28	.78		9.92	8.08
29	.04		9.96	8.12
30	.14		10.10	8.26
August Total		2.72		

**September**

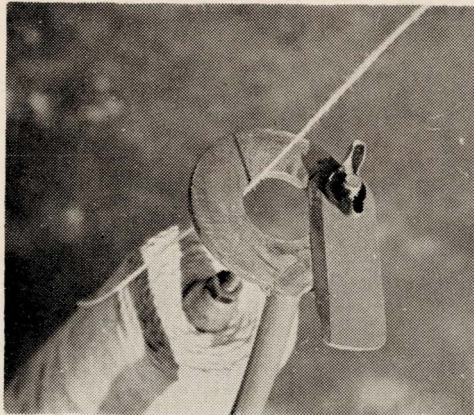
1	.06	10.16	8.32
2	.84	11.00	9.16
3	.29	11.29	9.45
18	.13	11.42	9.58
20	.19	11.61	9.77
21	.13	11.74	9.90
30	.12	11.86	10.02

September Total 1.76

**October**

1	.22	12.08
3	.08	12.16
9	.33	12.49
10	.78	13.27
15	.09	13.36
16	.06	13.42
17	.28	13.70
25	.04	13.74
26	.27	14.01
28	.27	14.28
30	.08	14.36
31	.05	14.41

October Total 2.55



**STRING RESEARCH** — In an effort to speed men over rough terrain from any location to a fire, this simple string dispenser was devised this year. The string released from an airplane flying at low elevations across timber lands can easily be followed. An airplane can lay string to a fire in two or three minutes and thus provide guidance aid to many fires which otherwise would take much more time to lead ground crews. This simple innovation was used in 1964 with good results. In heavier timber stands with dense canopy a colored plastic tape can be used which gives better visibility to ground crews.

**COMPARISON OF MONTHLY PRECIPITATION  
TAKEN AT ELK, RIVER, IDAHO**

	1964	1963	1962	1961	1960	1959	1958	1957	1956	1955	1954	1953	1952
June	3.22	2.70	1.39	1.31	1.29	2.36	4.38	1.55	2.19	2.14	3.59	1.32	3.80
July	2.32	.33	.20	.24	.12	.09	1.14	.49	1.11	1.84	.57	.00	.30
August	2.72	.43	.96	.51	2.45	1.17	.57	.64	2.38	.03	3.67	1.25	.42
3 Month Total	8.26	3.46	2.55	2.06	3.86	3.62	6.09	2.68	5.68	4.01	7.83	2.57	4.52
September	1.76	2.00	2.54	2.23	.90	7.79	2.90	.33	1.29	2.60	.63	.52	.49
4 Month Total	10.02	5.46	5.09	4.29	4.76	11.41	8.99	3.01	6.97	6.61	8.46	3.09	5.01

	1951	1950	1949	1948	1947	1946	1945	1944	1943	1942	1941	1940	1939
June	2.16	4.76	1.85	4.54	4.19	3.18	1.24	2.54	3.82	3.86	3.49	1.00	2.33
July	.93	1.35	.33	5.11	.27	.95	.12	.11	.83	1.39	.49	2.49	.63
August	.46	.30	.07	1.16	.38	.00	.61	1.17	.64	.36	1.85	.02	.05
3 Month Total	3.55	6.41	2.25	10.81	4.84	4.13	1.97	3.82	5.29	5.61	5.83	3.51	3.01
September	1.51	.37	2.31	1.12	2.41	1.69	3.49	2.38	.27	.51	4.42	4.06	.85
4 Month Total	5.06	6.78	4.56	11.93	7.25	5.82	5.46	6.20	5.56	6.12	10.25	7.57	3.86

	1938	1937	1936	1935	1934	1933	1932	1931	1930	1929	1928	Total	37-Year Avrg.
June	2.05	3.94	3.41	1.77	3.31	2.63	.99	.60	2.08	2.54	1.13	94.65	2.56
July	.40	.33	.44	.27	.19	.27	.41	.34	.95	.12	.65	28.12	.76
August	.52	.68	.12	.80	.00	.74	.14	.07	.58	.14	.13	28.19	.76
3 Month Total	2.97	4.95	3.97	2.84	3.50	3.64	1.54	1.01	3.61	2.80	1.91	150.96	4.08
September	1.97	.74	.79	.57	.64	2.49	.63	2.00	1.52	.27	.54	63.53	1.72
4 Month Total	4.94	5.69	4.76	3.41	4.14	6.13	2.17	3.01	5.13	3.07	2.45	214.49	5.80

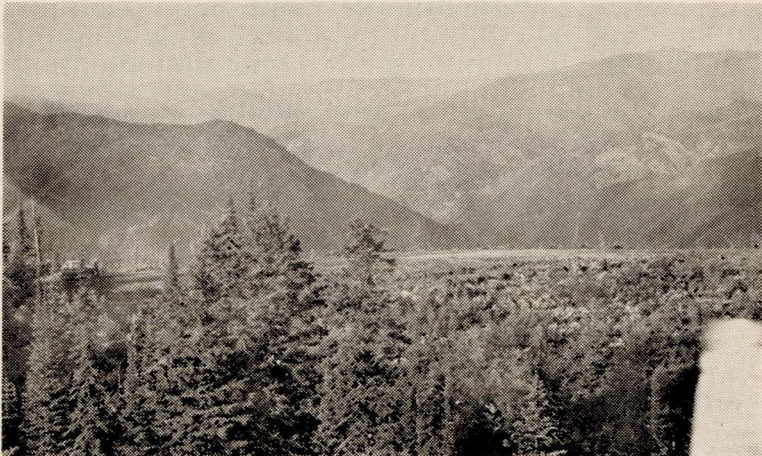


**TABLE NO. 1**  
**SHOWING FIRES BY CAUSE, EXTENT OF LOSS, CLASS**  
**AND ACREAGE INSIDE ASSOCIATION BOUNDARY**  
**1964**

	Light- ning	Un- known	Brush Burn- ing	Campers Hunters	Rail- road	Smokers	Misc.	Total
No. of Fires	26	0	0	0	0	0	3*	29
Percent	89.6	0	0	0	0	0	10.4	100%
Acreage	2½	0	0	0	0	0	0	2½
Class of Fire								
A	25	0	0	0	0	0	3	28
B	1	0	0	0	0	0	0	1
C	0	0	0	0	0	0	0	0
Net Loss MBF	0	0	0	0	0	0	0	0
Net Loss Poles	0	0	0	0	0	0	0	0

\*(1-Logger; 1-Old Mill Site; 1-Debris Burning)

	Light- ning	Un- known	Brush Burn- ing	Campers Hunters	Rail- road	Smokers	Misc.	Total
Cutover	7	0	0	0	0	0	2	9
Mer. Timber	11	0	0	0	0	0	0	11
B.O. & Grass	2	0	0	0	0	0	1	3
Reproduction	6	0	0	0	0	0	0	6
Totals	26	0	0	0	0	0	3	29



**HELIPORT ON SMITH RIDGE**—Wide spots on ridges in the back country are sometimes developed into ports. This port is on Smith Ridge, elevation about 5,000 feet, and in an area with considerable lightning fire occurrence. This development is a big assist in handling fires that occur near by.

**FIRE OCCURRENCE OVER A 41-YEAR PERIOD**  
(1924-1964 Inclusive)

	41-Year Total Number	Total Percent	41-Year Ave. Number
Lightning Fires .....	1,774	70%	43.2
Man Caused Fires .....	774	30%	18.9
Totals .....	2,548	100%	62.1

**BREAKDOWN OF FIRES**

Lightning .....	1,774	70%	43.2
Unknown .....	61	2%	1.5
Brush Burning .....	92	4%	2.2
Campers & Hunters .....	149	6%	3.6
Railroad .....	24	1%	.6
Smokers .....	226	9%	5.5
Incendiary .....	105	4%	2.6
Miscellaneous .....	117	4%	2.9
Totals .....	2,548	100%	62.1

**LIGHTNING STRIKE REPORT, 1964**

	Cedar	W. Fir	W. Pine	R. Fir	Y. Larch	Y. Pine	Y. Spruce	Hem- lock	Duff	Per Total	Cent
Live	6	10	4	1	2		1			24	92%
Dead		2								2	8%
Total Reported										26	100%

**P.T.P.A.**

**9 Year (1956-1964) Combined**

Live	47	94	55	19	17	7	2	17	0	258	65%
Dead	17	59	31	11	8	1	1	6	2	136	35%
Total Reported										394	100%

**P.T.P.A.-C.T.P.A.**

**9 Year (1956-1964) Combined**

Live	94	236	103	37	31	16	2	20	0	539	68%
Dead	36	114	46	21	14	14	2	6	2	255	32%
Total Reported										794	100%

**TABLE NO. 3**  
**FIRES IN FUEL TYPES**

	Extreme High	High	Normal	Total
Acreage in Association	15,020	6,060	448,599	469,679
Percent of Area	3.2	1.3	95.5	100%
Fires Expected	3	8	42	53
Actual Number of Fires	1	4	24	29
Percent	3.4	13.8	82.8	100%

**AIR PATROL VALUE—1964**

	Number	Percent
Fires First Discovered by Lookouts	7	24%
Fires First Discovered by Air Patrol	12	41%
Fires First Discovered by Others	10	35%
Total Fires	29	100%
Fires on which airplanes were used for location	16	
Airplanes used for Buzzing (Directing men)	10	
Total number of fires on which airplanes were used (Supply, Buzzing, Location, Discovery, etc.)	26	

**TANKER USE**

Total fires on which tankers were used	5
Total hours tankers were used (1 fire had two tankers in use at same time)	40½
Tanker size varied from 300 gal. to 1,000 gal.	

**AIRPLANE USAGE—1964**

Item	Hours
Fire Patrol and Directing men to Fires Detection, Fire Location, etc.	138.14
Equipment Service (Repair, Parts, Delivery, Mechanic Transportation)	8.98
Inspection Trips, Slash and Road	14.26
Overhaul, Test, Maintenance	11.48
Employee Passenger Service	9.20
Ambulance Service	7.15
Fire School Training Program	2.26
Total Hours	191.47

**AIR COST BREAKDOWN—1964**

Regular Fire Patrol .....	\$ 460.47
Locating and Buzzing (Directing) men to fires .....	151.50
Fire Training Program .....	23.68
Passenger Service .....	171.35
Repairs, Gas, Oil, Inspections, etc. ....	1,500.01
Less Credit Hazard Reduction Account .....	—878.07
Total P.T.P.A. Costs .....	\$ 621.94

One man on regular work schedule used as pilot when needed.  
One pilot hired as needed with wages of \$467.75 included in above.

---

**1964 PRODUCTION**


---

Total Log Production from Operators		
Holding contracts with F.M.A.		
	(Feetage)	182,045,990
Dollars Received from Above	-----	\$183,677.81
Total Log Production from Compliance		
	(Feetage)	6,296,870
And Cash Bond Operators	(Cords)	18.5
Dollars Received from Above	-----	\$ 6,296.87
Total Log Production	---- (Feetage)	188,342,860
	(Cords)	18.5
Total Money Received from Logs	-----	\$189,974.68
Total Cedar Production from Operators		
Holding Contracts with F.M.A.		
30' and shorter	-----	1,246
35' and longer	-----	17,353
Total Cedar Poles	-----	18,599
Posts	-----	-----
Dollars Received from Above	-----	\$ 10,072.37
Total Cedar Pole Production from Compliance		
And Cash Bond Operators		
30' and shorter	-----	283
35' and longer	-----	718
Total Cedar Poles	-----	1,001
Shake Board	-----	9,120
Posts	-----	25,967
Dollars Received from Above	-----	\$ 761.15
Total Cedar Production		
30' and Shorter	-----	1,529
35' and longer	-----	18,071
Total Cedar Poles	-----	19,600
Shake Board	-----	9,120
Posts	-----	25,967
Total Money Received from Cedar	-----	\$ 10,833.52
Total Dollars Received from All Operations		\$200,808.20

---

**BALANCE SHEET**

Close of Business—November 30, 1964

**Assets:****Current**

Idaho First National Bank, Potlatch .....		\$ 7,801.35*
Accounts Receivable—Sundry .....	\$ 800.59	
Assessments Receivable .....	8,749.59	
Mdse. Inventory—Provisions & Supplies .....	5,209.87	
State Insurance Fund .....	269.88	15,029.93
		<hr/>
Total Current Assets .....		\$ 7,228.58

**Fixed**

Camp Equipment & Tools .....	5,899.90	
Radio System .....	3,482.55	
Road Equipment & Machinery .....	471.67	
Livestock & Equipment .....	37.16	
Headquarters Building .....	7,874.04	
Motor Vehicles .....	3,003.38	
Telephone System .....	1,871.66	
		<hr/>
Total Fixed Assets .....		\$22,640.36
		<hr/>
Total Assets .....		\$29,868.94

**Liabilities:**

Grazing Fees Payable .....	\$ 4,500.40	
State Withholding Tax .....	139.00	
Surplus—Present Worth, Nov. 30, 1964 .....	25,229.54	
		<hr/>
Total Liabilities & Surplus .....		\$29,868.94

\*—Credit Balance

## OPERATING REPORT

December 1, 1963, to November 30, 1964

**Revenue:**

Membership Assessments .....	\$ 37,914.92	
Non-Member Assessments .....	3,049.75	
Other Income .....	3,935.83	
Forest Service—Protection Charges .....	24,539.52	
Dept. of Interior—Protection Charges .....	1,877.42	
Federal Contribution—Clark McNary Funds .....	20,444.06	
Wanigan .....	202.10	
Total Operating Revenue .....	91,963.60	
Grazing Fees Collected .....	4,500.40	
Gross Revenue .....		\$ 96,464.00

**Expenses:**

Fire Expense—Regular .....	\$ 393.68	
Fire Expense—Emergency .....	\$ 739.09	1,132.77
Headquarters Expense .....		17,705.61
Salary & Expense, Chief Fire Warden .....		4,981.47
Workmen's Compensation Insurance .....		797.90
Lookout Development & Maintenance .....		972.09
Maint. of Livestock & Equip. ....		35.63
Maint. of Radio System .....		1,367.43
Main Office Expense .....		5,825.83
Maint. of Road Equip. & Machinery .....		4,045.07
Maint. of Headquarters Buildings .....		681.06
Maint. & Operation of Motor Vehicles .....		6,245.12
Maint. of Established Roads & Trails .....		6,784.32
Maint. of Telephone System .....		1,945.87
Patrolling, Smokechasing & Lookout Watch. ....		12,632.71
Airplane Patrol .....		621.94
New Road & Trail Building .....		937.83
Miscellaneous Expense .....		1,389.92
Insurance .....		2,762.50
State Unemployment Tax .....		2,274.65
Federal Unemployment Tax .....		439.69
Federal Insurance Contributions Act .....		1,923.31
TOTAL .....	\$ 75,502.72	

**Depreciation Deductions:**

Camp Equipment & Tools .....	\$1,334.03	
Radio System .....	543.57	
Road Equipment & Machinery .....	160.27	
Livestock & Equipment .....	34.86	
Headquarters Buildings .....	874.89	
Motor Vehicles .....	581.01	
Telephone System .....	267.38	3,796.01
Total Expense & Depreciation .....	\$ 79,298.73	
Grazing Fees to be Distributed .....	4,500.40	
Blisters Rust Contributions .....	8,749.59	13,249.99
Total Gross Expense .....		\$ 92,548.72
Net Gain for Period to Surplus .....		\$ 3,915.28

**ACREAGE AND ASSESSMENT OF MEMBERS**

1964

	Acreage	Assessment No. 1 10c	Blister Rust Assessment 3c	Total Assessment 13c	Amount Paid Prior to Nov. 30, 1964	Balance Due
L. Cardiff, Inc. ....	160	\$ 16.00	\$ 4.80	\$ 20.80	\$ 16.00	\$ 4.80
Diamond National Corp. ....	22,870	2,287.00	686.10	2,973.10	2,287.00	686.10
Joslyn Mfg. & Supply Co. ....	43	4.30	1.29	5.59	4.30	1.29
Mead & Howard Lumber Co. ....	4,282	428.20	128.46	556.66	428.20	128.46
Milwaukee Land Co. ....	6,464	646.40	193.92	840.32	646.40	193.92
Northern Pacific Railway Co. ....	1,895	189.50	56.85	246.35	189.50	56.85
Potlatch Forests, Inc. ....	132,022	13,202.20	3,960.66	17,162.86	13,202.20	3,960.66
State of Idaho .....	123,917	12,391.73	3,717.51	16,109.24	12,391.73	3,717.51
	<u>291,653</u>	<u>29,165.33</u>	<u>8,749.59</u>	<u>37,914.92</u>	<u>29,165.33</u>	<u>8,749.59</u>

Assessment No. 1 of 10c per acre was levied July 27, 1964

Blister Rust Assessment of 3c per acre was levied Nov. 27, 1964

**GRAZING FEES COLLECTED—1964**

	<b>Sheep</b>	<b>Cattle</b>	<b>Dollars</b>
A. R. Bohman		50	100.00
Edwin Brosten		71	142.00
Clearwater Outfitters		35	70.00
Dicks Cr. Grazing Assn.		528	1,056.00
George Hatley		5	10.00
N. E. Heath & Sons		44	88.00
Don Kress		36	72.00
McGregor Land & Livestock Co.	2136		854.40
North Fork Grazing Assn.		129	258.00
Floyd E. Parker		5	10.00
Don McKinney & Sons		10	20.00
Mervin DeRuwé	2000		800.00
Total P.T.P.A. Leases	4136	913	\$3,480.40
U.S.F.S. Collections		510	1,020.00
Totals	4136	1423	\$4,500.40

Fees not include Livestock grazed on U.S.F.S. Lands

**GRAZING FEES DISTRIBUTED**

	<b>Acreage</b>	<b>Factor</b>	<b>Amount</b>
L. Cardiff, Inc.	160	.00055	\$ 2.48
Diamond National Corp.	22870	.07841	352.87
Joslyn Mfg. & Supply Co., Inc.	43	.00015	.68
Mead & Howard Lumber Co.	4282	.01468	66.06
Milwaukee Land Co.	6464	.02216	99.73
Northern Pacific Railway Co.	1895	.00650	29.25
Potlatch Forests, Inc.	132022	.45267	2,037.20
State of Idaho	123917	.42488	1,912.13
Totals:	291653	1.00000	\$4,500.40



**MEMORANDUM COMPARISON**

**Fiscal Years 1962, 1963 and 1964**

	1962	1963	1964
Number of Members (including N. P. Railway Co.) -----	8	8	8
Amount of Members Acreage Assessed (Acres) -----	289,912	291,818	291,653
Rate of Assessment per Acre (Members) -----	.15	.16	.13
Non-Member Acreage Assessed (Acres) -----	52,686	52,507	52,572
Non-Members Assessment Collected -----	\$ 2,947.43	\$ 2,699.14	\$ 3,049.75
U. S. Forest Service Acreage (Acres) -----	111,543	111,543	111,543
Public Domain—Department of Interior (Acres) -----	13,174	12,533	12,533
Net Grazing Fees Distributed or to be Distributed -----	\$ 4,455.80	\$ 4,214.80	\$ 4,500.40
Gross Payroll -----	\$ 59,245.24	\$ 65,072.03	\$ 53,115.17
Clark-McNary Contributions -----	\$ 23,813.76	\$ 20,799.52	\$ 20,444.06
Total Revenue -----	\$102,726.04	\$ 95,573.99	\$ 96,464.00
Total Expense -----	\$103,397.40	\$117,657.24	\$ 92,548.72
Total Receipts -----	\$116,742.91	\$124,696.24	\$117,081.58
Total Disbursements -----	\$120,562.62	\$138,603.60	\$120,261.51
Total Accounts Receivable, Nov. 30th -----	\$ 10,173.90	\$ 8,404.54	\$ 9,550.18
Total Accounts Payable, Nov. 30th -----	\$ 4,585.59	\$ 4,373.32	\$ 4,639.40

## 1963 Annual Report

### 1963 FIRE SEASON

The 1963 fire season on the Potlatch Timber Protective Association was characterized by the largest number of fires in any one year since 1929. The average season, for a period of over 50 years, indicates a fire occurrence of about 63 fires per year. This year 133 fires occurred, or 202% of the average, and resulted in 69.62 acres burned as compared to the long-time average of 107 acres burned per year. During the 1963 season 91% of the fires were caused by lightning, while the 41-year average indicates 69% have been caused by lightning.

Fire weather conditions were generally more favorable in 1963 than for some time past. The most critical portion of the fire season occurred in late September and the first few days of October. In July there were 3 days with measurable precipitation for a total of .33 of an inch and in August there were three days with a total of .43 of an inch of rain. The longest period without precipitation was 20 days, from August 12th to September 2nd. June precipitation was 106% of the 36-year average, while July precipitation was only 46% of the long-time average and in August 61% of the average for the month was recorded.

During the 1963 fire season there were three lightning storm periods. The first period occurred on August 4th, setting 35 fires and resulting in 11.25 acres burned. Following this storm, on August 7th a fire started on cedar operations and resulted in 43.12 acres burned and was the most costly fire during the 1963 season. This case of a man-caused fire is being prepared for the courts in order to obtain the expenses of the Association from the operator. On August 12th lightning storms started 63 fires on the Association area, resulting in 2 acres of burned area. Eleven fires were started by a storm on September 1 and these fires burned 3½ acres.

In summation of the 1963 fire season, better fire weather conditions existed during the usually critical months. Storms were generally accompanied with precipitation. Lightning fires accounted for 38% of the acreage burned while man-caused fires resulted in 62% of burned area. The number of lightning sets was far above normal with less than normal acreage burned.

During the 1963 season a total of 46 burning permits were issued by the Association. The Association personnel have cooperated very well with land owners to assist in obtaining better burns without endangering adjacent property. Burning permits were issued as follows:

1963	Logging Slash	Land Clearing	Stubble & Grass	Debris Burning	Total
Spring	2	15	1	3	21
Fall	6	18	1	0	25
Total	8	33	2	3	46

### IMPROVEMENTS

In spite of a very active fire season improvement work was continued on the Association. Construction of low standard fire access roads were the main projects and are listed as follows: (1) Approximately  $\frac{3}{4}$  of a mile of jeep road constructed south of the Freezeout lookout. (2) One mile of road built on the Mary Mix area of the Floodwood creek drainage. (3) Approximately two miles of jeep road constructed on the ridge extending west from the McGary lookout. This road will connect with the Boulder creek road system.

### COMMUNICATIONS

Our communications system continues to improve with addition of new equipment and improvement in the use of existing equipment. A new base station was purchased for the Elk River dispatch office.

The number of miles of telephone lines has greatly diminished due to continued improvement on the Association radio system. During the 1963 fire season the following telephone lines were maintained: Boehl's Cabin to Elk River; Elk River to Big Island; Elk River to Mason Butte.

### LEGISLATION

Five years ago the state legislation changed the closed fire season dates from June 1 through September 30, to May 1 through October 31. During the past session of the legislature the extended fire season was shortened to May 10 through October 20. Some groups in the state have been opposed to the longer season, but those concerned with fire protection considered the longer season a wise piece of legislation.

### BRUCE'S EDDY

The 87th Congress of the United States authorized the construction of the Bruce's Eddy project. A 673-foot high dam will create a 16,970-acre lake at high level during the summer along the south east boundaries of the Association.

The contract for the first phase of clearing the pool area will be awarded prior to the 1964 fire season. Association personnel have cooperated with the Army Engineers in rec-

ommendations concerning slash disposal and debris removal with emphasis on the protection of adjacent timber lands to the pool area.

The first phase of the pool clearing will extend approximately 5 miles upstream from the dam site. The contractor will be allowed to burn slash and debris in the pool area during the closed fire season with precautionary measures. The main concern of Association personnel is to assure holding of all fires inside the pool area. The planning and cooperation of all parties will be very important and will be the key to protection of adjacent timber stands.



**BUS GROUP**—The Association Directors toured parts of the Association with Army Corp of Engineers during the summer of 1964 to consider re-location sites for the new Boehl's Cabin camp and a re-located airfield, which will also be needed as the present Larson Bar airstrip will also be inundated.

**DETAILED STATEMENT OF FIRES—1963**

No.	Name	Date	Acres	Sub. Div.	S	T	R	Land Owner	Cause	Type of Land Damage	
1.	Right of Way	5-30-63	¾-acre	NENE	27	40N	2E	U. S. Forest Service	Debris Burn	Cut-over	None
2.	Feather Creek	6-28-63	Spot	NENE	27	42N	1W	Milwaukee Land Co.	Lightning	Mer. Timber	None
3.	Mason Butte	7-14-63	Spot	SESW	16	38N	1E	Potlatch Forests	Lightning	Mer. Timber	None
4.	Jerico Lookout	7-14-63	Spot	NESW	17	39N	3E	U. S. Forest Service	Lightning	Mer. Timber	None
5.	Bacon	7-25-63	Spot	NENE	14	38N	1E	Potlatch Forests	Lightning	Mer. Timber	None
6.	Trappers Peak	8- 4-63	Spot	NWNE	5	41N	4E	State of Idaho	Lightning	B. O. & Grass	None
7.	Stoney Creek	8- 4-63	7-acre	NWNW	5	41N	3E	Potlatch Forests	Lightning	Cut-over	None
8.	O'Donnell Creek	8- 4-63	Spot	NENE	19	42N	5E	Diamond National	Lightning	Cut-over	None
9.	Camp 40 Shortcut	8- 4-63	Spot	SENW	1	42N	3E	U. S. Forest Service	Lightning	Mer. Timber	None
10.	So. Fork Robinson	8- 4-63	Spot	NESW	17	40N	4E	Milwaukee Land Co.	Lightning	Mer. Timber	None
11.	Bear Wallow	8- 4-63	Spot	SENE	7	41N	4E	State of Idaho	Lightning	Mer. Timber	1.5 MBF
12.	Mallory Creek	8- 4-63	Spot	SENW	6	41N	2E	Milwaukee Land Co.	Lightning	Mer. Timber	None
13.	Isabella Ridge	8- 4-63	Spot	SENW	13	41N	3E	Potlatch Forests	Lightning	Mer. Timber	None
14.	Orr	8- 4-63	Spot	SWSW	12	41N	3E	Potlatch Forests	Lightning	Mer. Timber	None
15.	Gold Butte	8- 4-63	2-acre	SWSW	36	40N	3E	State of Idaho	Lightning	Reproduction	None
16.	Elmberry	8- 4-63	Spot	NWSE	29	40N	4E	U. S. Forest Service	Lightning	Reproduction	None
17.	Breakfast Creek	8- 4-63	Spot	SWNE	20	41N	4E	State of Idaho	Lightning	Mer. Timber	None
18.	Clover Leaf	8- 4-63	Spot	NESW	22	39N	2E	Potlatch Forests	Lightning	Cut-over	None
19.	Meadow Creek	8- 4-63	Spot	SWSE	21	39N	2E	U. S. Forest Service	Lightning	Reproduction	None
20.	Laguna	8- 4-63	Spot	NESE	26	42N	1W	U. S. Forest Service	Lightning	Mer. Timber	None
21.	McHalpin	8- 4-63	Spot	NWNE	35	42N	1W	Milwaukee Land Co.	Lightning	Mer. Timber	None
22.	Corral	8- 4-63	Spot	SENW	16	40N	1E	State of Idaho	Lightning	Cut-over	None
23.	Camp Y	8- 4-63	Spot	NWSE	16	38N	2E	Potlatch Forests	Lightning	Cut-over	None
24.	Bobs Creek	8- 4-63	Spot	NESE	12	41N	1E	Potlatch Forests	Lightning	Mer. Timber	None
25.	Patterson	8-12-63	Spot	NENE	33	41N	2E	U. S. Forest Service	Lightning	Cut-over	None
26.	Old Camp 16	8-12-63	Spot	SESE	4	40N	2E	U. S. Forest Service	Lightning	Cut-over	None
27.	Neva Hill	8- 5-63	Spot	SESW	23	40N	1E	U. S. Forest Service	Lightning	Mer. Timber	None
28.	Boathouse Creek	8- 4-63	Spot	NWNW	6	39N	4E	Diamond National	Lightning	Reproduction	None
29.	Rubedew	8- 4-63	Spot	NESW	1	39N	2E	Potlatch Forests	Lightning	Mer. Timber	None
30.	Cedar	8-12-63	Spot	NENW	10	40N	2E	U. S. Forest Service	Lightning	Reproduction	None
31.	Round Meadow	8- 5-63	Spot	NWNW	34	40N	1E	Powell & Bohman	Lightning	Cut-over	None
32.	Hemlock	8- 4-63	Spot	SESE	2	41N	2E	Bureau of Land Mgmt.	Lightning	Mer. Timber	None
33.	Helmer	8- 6-63	Spot	NWNE	7	40N	1W	State of Idaho	Lightning	Reproduction	None

DETAILED STATEMENT OF FIRES CONTINUED—1963

No.	Name	Date	Acres	Sub. Div.	S	T	R	Land Owner	Cause	Type of Land Damage	
34.	Star Butte	8- 6-63	Spot	NESW	36	41N	2E	State of Idaho	Lightning	Mer. Timber	None
35.	Isabella Creek	8- 4-63	¾-acre	NESE	23	41N	3E	Diamond National	Lightning	Mer. Timber	None
36.	Woesner Ridge	8- 7-63	Spot	SWNE	18	42N	4E	U. S. Forest Service	Lightning	Mer. Timber	None
37.	Castle Rock	8- 7-63	Spot	SENE	23	42N	4E	U. S. Forest Service	Lightning	Mer. Timber	None
38.	Alderman Ridge	8- 4-63	Spot	SWSW	27	38N	1E	State of Idaho	Lightning	Mer. Timber	None
39.	Minkler	8- 7-63	43.12-A	NESW	9	39N	2E	U. S. Forest Service	Logger	Mer. Timber 235MBF & Cut-over 90% Sal.	
40.	Corner	8- 7-63	½-acre	NWNW	7	41N	2E	Potlatch Forests	Lightning	Mer. Timber	None
41.	Tom's	8-12-63	Spot	SENW	33	41N	2E	U. S. Forest Service	Lightning	Reproduction	None
42.	Crater Peak	8- 9-63	Spot	NWNW	33	43N	4E	Bureau of Land Mgmt.	Lightning	B. O. & Grass	None
43.	N. Fork Dix Crk	8-12-63	Spot	SWSE	34	39N	1E	Potlatch Forests	Lightning	Cut-over	None
44.	Gravel Pit	8-12-63	Spot	NWSW	34	40N	2E	U. S. Forest Service	Lightning	Reproduction	None
45.	Halls Road	8-12-63	Spot	SENW	17	40N	3E	Diamond National	Lightning	Reproduction	None
46.	Halls Old Camp	8-12-63	Spot	NESE	20	40N	3E	Diamond National	Lightning	Reproduction	None
47.	Bark Camp	8-12-63	Spot	NENE	23	40N	3E	Diamond National	Lightning	Reproduction	None
48.	Divide	8-12-63	Spot	SESE	3	38N	1W	C. H. Hunt	Lightning	Cut-over	None
49.	Meadow Crk. #1	8-12-63	Spot	SESE	25	39N	1E	State of Idaho	Lightning	Mer. Timber	None
50.	Big Island	8-12-63	Spot	NWNW	31	39N	4E	State of Idaho	Lightning	B. O. & Grass	None
51.	Meadow Crk. #2	8-13-63	Spot	NWNW	25	39N	1E	State of Idaho	Lightning	Mer. Timber	None
52.	Brown's Camp	8-12-63	½-acre	SWSE	33	39N	1E	Potlatch Forests	Lightning	Cut-over	1.5MBF
53.	West Elk Butte	8-12-63	Spot	NESW	24	41N	2E	U. S. Forest Service	Lightning	Reproduction	None
54.	Hemlock Gate	8-12-63	Spot	SENE	2	42N	3E	U. S. Forest Service	Lightning	Mer. Timber	None
55.	Bishops Bar	8-12-63	Spot	SWNE	25	41N	5E	State of Idaho	Lightning	Reproduction	None
56.	Roger Creek	8- 4-63	1-acre	SENW	23	41N	1E	Potlatch Forests	Lightning	Cut-over	None
57.	Elk Butte	8-13-63	Spot	SWNW	6	40N	3E	Bureau Land Mangmt.	Lightning	Mer. Timber	None
58.	Ralph's	8-12-63	Spot	NWSE	28	41N	2E	Potlatch Forests	Lightning	Reproduction	None
59.	Scherer	8-12-63	Spot	NESE	28	41N	2E	Potlatch Forests	Lightning	Cut-over	None
60.	Hansen	8-12-63	Spot	SESE	33	41N	2E	U. S. Forest Service	Lightning	Cut-over	None
61.	Jackson Lookout	8-12-63	Spot	SWSE	12	40N	1E	U. S. Forest Service	Lightning	Mer. Timber	None
62.	Twenty One	8-12-63	Spot	SWNE	21	41N	2E	Potlatch Forests	Lightning	Reproduction	None
63.	Dahlin	8-12-63	Spot	NENE	33	41N	2E	U. S. Forest Service	Lightning	Cut-over	None
64.	Gold Creek	8-12-63	Spot	SENW	25	40N	3E	Milwaukee Land Co.	Lightning	Mer. Timber	None
65.	Camp 40	8-12-63	Spot	NESW	27	42N	3E	Potlatch Forests	Lightning	Cut-over	None

**DETAILED STATEMENT OF FIRES CONTINUED—1963**

No.	Name	Date	Acres	Sub. Div.	S	T	R	Land Owner	Cause	Type of Land	Damage
66.	Engineers	8-12-63	Spot	NWNE	23	38N	2E	State of Idaho	Lightning	Cut-over	None
67.	Weller Creek	8-12-63	Spot	SENW	11	38N	3E	Potlatch Forests	Lightning	Reproduction	None
68.	Cranberry Creek	8-12-63	Spot	NWNE	12	38N	2E	State of Idaho	Lightning	Cut-over	None
69.	Pearcey	8-12-63	Spot	SESE	33	41N	2E	U. S. Forest Service	Lightning	Cut-over	None
70.	Bloom Creek	8- 4-63	½-acre	NWNE	1	40N	1E	Diamond National	Lightning	Reproduction	None
71.	Long Hike	8-12-63	Spot	NESW	27	42N	4E	Potlatch Forests	Lightning	Mer. Timber	2MBF
72.	Long Meadow	8-13-63	Spot	NWNE	4	39N	1E	Potlatch Forests	Lightning	Cut-over	None
73.	Upper Basin #1	8-12-63	Spot	NESW	24	41N	2E	U. S. Forest Service	Lightning	Reproduction	None
74.	Gold Lookout	8-12-63	Spot	NWNW	35	40N	3E	Potlatch Forests	Lightning	Mer. Timber	None
75.	Ladd's Creek	8-13-63	Spot	SWNE	8	38N	3E	Potlatch Forests	Lightning	Reproduction	None
76.	W. Side McGary	8-12-63	Spot	NWSW	30	40N	1E	Mead & Howard	Lightning	Reproduction	None
77.	Star	8-12-63	Spot	NESW	27	41N	2E	U. S. Forest Service	Lightning	Cut-over	None
78.	Westside	8-12-63	Spot	SWSW	1	39N	1W	Potlatch Forests	Lightning	Cut-over	None
79.	Diamond Camp	8-12-63	Spot	NWSW	16	40N	3E	State of Idaho	Lightning	Reproduction	None
80.	Tick Ridge	8-12-63	Spot	NESW	2	39N	2E	U. S. Forest Service	Lightning	Mer. Timber	None
81.	Ikes Creek	8-12-63	Spot	NWSW	8	40N	3E	U. S. Forest Service	Lightning	Reproduction	None
82.	Squaw Creek	8-12-63	Spot	NESE	19	40N	3E	State of Idaho	Lightning	Cut-over	None
83.	Darrell	8-12-63	Spot	NWSE	4	40N	2E	U. S. Forest Service	Lightning	Cut-over	None
84.	Horse Shoe Bend	8-12-63	Spot	NWSE	8	40N	1E	U. S. Forest Service	Lightning	Reproduction	None
85.	Parallel	8-12-63	Spot	SENW	8	38N	2E	Joe Richardson	Lightning	Cut-over	None
86.	Triangle	8-12-63	Spot	SESE	6	38N	3E	Potlatch Forests	Lightning	B. O. & Grass	None
87.	Camp L	8-13-63	Spot	SENW	33	39N	3E	Potlatch Forests	Lightning	Mer. Timber	None
88.	Thousand Loop	8-14-63	Spot	NWNW	36	40N	3E	State of Idaho	Lightning	Mer. Timber	None
89.	Quick	8-12-63	Spot	NESW	24	40N	1W	U. S. Forest Service	Lightning	Reproduction	None
90.	Shattuck	8-12-63	Spot	NESW	27	41N	2E	U. S. Forest Service	Lightning	Cut-over	None
91.	Elk Butte By Pas	8-13-63	Spot	SWSW	5	40N	3E	U. S. Forest Service	Lightning	Mer. Timber	None
92.	Jerico Peak	8-13-63	Spot	NWNE	17	39N	3E	Potlatch Forests	Lightning	Reproduction	None
93.	Sam George	8-12-63	Spot	NWSW	22	40N	2E	State of Idaho	Lightning	Reproduction	None
94.	Center	8-12-63	Spot	SENW	21	41N	2E	Potlatch Forests	Lightning	Reproduction	None
95.	Camp R	8-13-63	Spot	NWNE	5	39N	3E	Potlatch Forests	Lightning	Mer. Timber	None
96.	Pivash	8-13-63	Spot	SENW	6	40N	2E	Diamond National	Lightning	Cut-over	None
97.	Viewpoint	8-13-63	Spot	NWNE	21	41N	3E	Diamond National	Lightning	Reproduction	None
98.	Bishop Creek	8-14-63	Spot	NWSE	27	39N	3E	Potlatch Forests	Lightning	Mer. Timber	None
99.	Grice Ridge	8-14-63	½-acre	NWSE	34	42N	3E	Potlatch Forests	Lightning	Cut-over	None

DETAILED STATEMENT OF FIRES CONTINUED—1963

No.	Name	Date	Acres	Sub. Div.	S	T	R	Land Owner	Cause	Type of Land Damage
100.	Hi-Way	8-15-63	Spot	SESE	28	40N	2E	State of Idaho	Lightning	Cut-over None
101.	Boulder	8-15-63	½-acre	SESW	1	39N	1W	Potlatch Forests	Lightning	Cut-over None
102.	White Pine	8-15-63	Spot	NWSE	26	39N	1E	State of Idaho	Lightning	Mer. Timber None
103.	Palouse	8-16-63	Spot	NENE	21	42N	1W	Potlatch Forests	Lightning	Mer. Timber None
104.	Moose Meadow	8-17-63	Spot	SESE	20	41N	1W	State of Idaho	Lightning	Reproduction None
105.	Boulder Peak	8-18-63	½-acre	NWNW	1	39N	1W	U. S. Forest Service	Lightning	Cut-over None
106.	O'Reilly	8-12-63	Spot	SWNE	29	39N	3E	U. S. Forest Service	Lightning	Cut-over None
107.	Hemlock Cabin	8-21-63	Spot	NWNW	13	41N	2E	N. P. Railway Co.	Lightning	Mer. Timber None
108.	Four Corners	8-23-63	Spot	NWSE	8	38N	3E	Potlatch Forests	Lightning	Reproduction None
109.	Crescendo Peak	8-24-63	Spot	NENW	36	42N	5E	State of Idaho	Lightning	Mer. Timber None
110.	Nellies	8-31-63	Spot	NESW	33	43N	4E	Bureau of Land Mngt.	Lightning	Mer. Timber None
111.	Mary Mix	9- 2-63	Spot	SESW	22	42N	4E	Potlatch Forests	Lightning	Mer. Timber None
112.	Morris Crk. Ridge	9- 1-63	Spot	SENW	27	41N	2E	U. S. Forest Service	Lightning	Cut-over None
113.	Camp 43	9- 1-63	Spot	NWNW	32	40N	3E	Potlatch Forests	Lightning	Cut-over None
114.	Mamies	9- 2-63	Spot	NWNW	25	40N	2E	Potlatch Forests	Lightning	Reproduction None
115.	Stoney Butte	9- 2-63	Spot	NENE	29	42N	3E	U. S. Forest Service	Lightning	Cut-over None
116.	Homestead Hump	9- 2-63	Spot	NENE	10	41N	3E	State of Idaho	Lightning	Mer. Timber 3MBF
117.	Upper Basin #2	9- 2-63	Spot	NWSE	18	41N	3E	U. S. Forest Service	Lightning	Mer. Timber None
118.	Abel	9- 1-63	Spot	NESW	29	39N	3E	U. S. Forest Service	Lightning	Mer. Timber None
119.	Elmberry Creek	9- 1-63	Spot	SWSE	21	40N	4E	Potlatch Forests	Lightning	Mer. Timber None
120.	Steep Climb	9- 3-63	Spot	SESE	10	41N	3E	State of Idaho	Lightning	Mer. Timber None
121.	Box Canyon	9- 4-63	1-acre	NENW	11	41N	5E	State of Idaho	Lightning	Mer. Timber 4MBF
122.	Saturday	9-7-63	2½-acre	NENE	5	40N	2E	U. S. Forest Service	Lightning	Mer. Timber None
123.	Honey Tree	9- 9-63	Spot	NWNW	33	40N	1W	U. S. Forest Service	Misc.	Cut-over None
124.	Squaw Mountain	9-11-63	Spot	SENE	16	42N	3E	U. S. Forest Service	Lightning	Mer. Timber None
125.	Stanton Slash	9-28-63	1-acre	NENW	12	41N	4E	State of Idaho	Unknown	Cut-over None
126.	Smith Ridge	9-30-63	Spot	SWNE	13	41N	5E	State of Idaho	Hunter	Mer. Timber None
127.	Ruby Creek	9-30-63	5-acre	NESE	14	40N	1E	Bureau of Land Mngt.	Unknown	Cut-over 4MBF
128.	Hoodo Cabin	10- 7-63	Spot	SESE	28	41N	4E	State of Idaho	Hunter	Mer. Timber None
129.	Swanson	10-15-63	Spot	SWSE	14	38N	1W	Adeline Swanson	Misc.	Cut-over None
130.	Hunter	10-15-63	Spot	NENE	6	40N	3E	U. S. Forest Service	Hunter	Mer. Timber None
131.	Rock Crusher	10-18-63	Spot	SESE	8	39N	2E	U. S. Forest Service	Unknown	Mer. Timber None
132.	Rodgers Ridge	11- 3-63	Spot	SWSW	13	41N	1E	Potlatch Forests, Inc.	Hunter	Cut-over None
133.	Ringsage	11-3-63	2½-acre	NWNW	10	39N	1W	Potlatch Forests, Inc.	Hunter	Cut-over None



1963—COST BREAKDOWN — INDIVIDUAL FIRES — SUPPRESSION ONLY

November 30, 1963

Fire No.	Name	Wages FEE*	Wages FER**	Total Wages	Power Saw	Transports Dozers	Pumpers	Mileage	Meals	Plane	Total Cost
1.	Right of Way	\$43.26		\$43.26				\$3.30	\$10.80		57.36
2.	Feather Creek	98.70		98.70				13.50	6.40		118.60
3.	Mason Butte	6.00	\$10.40	16.40			\$3.00	2.00	6.00	\$4.50	31.90
4.	Jerico Lookout	19.88	32.44	52.32			4.00	2.50	9.60	4.50	72.92
5.	Bacon		37.08	37.08			12.00	3.40	6.00		58.48
6.	Trapper Peak	44.68	27.39	72.07				2.70	15.60		90.37
7.	Stoney Creek	457.08	78.63	535.71	\$10.00	\$224.00	35.22***	57.20	86.40		948.53
8.	O'Donnell Creek	90.19	25.15	115.34			6.25	2.60	15.60		139.79
9.	Camp 40 Short Cut	13.88	23.09	36.97				3.80	3.60		44.37
10.	Southfork Robinson	46.36	22.83	69.19				3.30	13.20	6.00	91.69
11.	Bear Wallow	4.50		4.50							4.50
12.	Mallory Creek	27.50		27.50				6.20	4.80		38.50
13.	Isabella Ridge	15.78	40.59	56.37				7.90	18.00	8.25	90.52
14.	Orr	27.20		27.20				3.50	3.00	16.50	50.20
15.	Gold Butte	637.96	51.61	689.57	55.00	390.00		24.20	108.00	5.00	1,271.77
16.	Elmberry	30.25		30.25	2.00			5.50	4.50		42.25
17.	Breakfast Creek	38.77	10.20	48.97				4.20	7.20	8.25	68.62
18.	Clover Leaf	128.99	47.69	176.68			22.00	13.80	27.60	24.00	264.08
19.	Meadow Creek	32.73	14.27	47.00			11.00	6.60	14.40		79.00
20.	Laguna	58.23		58.23				7.00	9.60	8.00	82.83
21.	McHalpin	38.81		38.81				6.80	2.40	8.25	56.26
22.	Corral	124.05		124.05	9.50			13.40	9.00		155.95
23.	Camp Y	53.34	11.71	65.05	6.00		6.00	8.00	7.20	8.25	100.50
24.	Bobs Creek	67.80		67.80				6.25	4.80	16.50	95.35
25.	Patterson			No Cost Involved							
26.	Old Camp 16		36.58	36.58				1.80			38.38
27.	Neva Hill	218.52		218.52	12.00			6.60	54.00		291.12
28.	Boathouse Creek	48.36	21.10	69.46				5.60	14.40	8.25	97.71
29.	Rubedew	123.60		123.60				3.70	12.00	18.00	157.30
30.	Cedar	30.64		30.64	1.00			2.90	7.20	2.00	43.74
31.	Round Meadow	214.21	31.28	245.49	3.00			10.20	37.20	12.00	307.89
32.	Hemlock	16.61		16.61				6.10	3.60		26.31
33.	Helmer	36.68	45.31	81.99				7.60	13.20	16.50	119.29
34.	Star Butte	23.38	14.10	37.48				3.40	3.60		44.48
35.	Isabella Creek	518.80	19.87	538.67				15.80	45.60	16.50	616.57
36.	Woesner Ridge	73.21	18.75	91.96				3.40	30.00		125.36

\*FEE—Fire Expense Emergency

\*\*FER—Fire Expense Regular

\*\*\*This item (\$35.22) was for gas & oil

1963—COST BREAKDOWN — INDIVIDUAL FIRES—SUPPRESSION ONLY (Continued)

Fire No.	Name	Wages		Total Wages	Power Saw	Transports Dozers	Pumpers	Mileage	Meals	Plane	Total Cost
		FEE*	FER**								
37.	Castle Rock	23.56	88.64	112.20				7.90	21.60	2.50	144.20
38.	Alderman Ridge	37.36		37.36				3.20	8.40	8.00	56.96
39.	Minkler	3,724.56	617.91	4,342.47	122.00	604.25	1,570.50	47.11	1,284.00	270.00	8,240.33
40.	Corner	\$ 243.57		\$ 243.57		\$ 32.00		\$ 6.10	\$36.00	\$ 2.50	\$320.17
41.	Tom's	21.50		21.50				3.00	2.40	8.25	35.15
42.	Crater Peak	7.26	\$ 12.90	20.16				4.60	2.40		27.16
43.	Northfork Dix	4.75		4.75		11.00					15.75
44.	Gravel Pit	27.00		27.00			\$ 2.50	.80			30.30
45.	Halls Road	80.00		80.00	\$ 18.00		8.00	14.00	7.20		127.20
46.	Halls Old Camp	47.50	22.00	69.50			8.00	3.60	18.00		99.10
47.	Bark Camp	169.30		169.30		3.00		3.10	28.80		204.20
48.	Divide	9.90		9.90				2.80	3.00		15.70
49.	Meadow Creek #1	21.20		21.20				1.50	2.40	3.00	28.10
50.	Big Island	36.76		36.76				12.40	7.20	12.00	68.36
51.	Meadow Creek #2	19.56		19.56				2.40	3.60	9.50	35.06
52.	Browns Camp	151.65		151.65	2.00	45.00	24.00	10.50	24.00		257.15
53.	West Elk Butte	34.50		34.50				6.00			40.50
54.	Hemlock Gate	17.36	9.35	26.71				5.90	3.00		33.21
55.	Bishop Bar	6.03	6.45	12.54				2.40	3.60		18.54
56.	Rogers Creek	194.42		194.42		32.00		13.48	49.35		339.25
57.	Elk Butte	66.57		66.57				1.00	18.00		85.57
58.	Ralphs	51.30		51.30				2.00	7.20	2.50	63.00
59.	Scherer	58.09		58.09				2.40	7.20	2.50	70.19
60.	Hall	12.00		12.00	4.00			2.00	2.40		20.40
61.	Jackson Lockout	20.22	8.07	28.29				3.90	3.60	8.00	43.79
62.	Twenty One	24.75		24.75				3.20	6.00	8.50	42.45
63.	Dahlin			No Cost Involved							
64.	Gold Creek	61.32		61.32				1.00	2.40		65.32
65.	Camp 40	43.34		43.34				2.66	18.00	7.75	71.75
66.	Engineers			No Cost Involved							
67.	Weller Creek	33.05	6.45	39.50				5.00	10.80	8.50	63.80
68.	Cranberry Creek	135.01	90.01	225.02	3.00	45.00	30.00	13.80	63.00	15.75	395.57
69.	Pearsey	143.55	7.20	150.75	4.00			5.50	9.60		169.85
70.	Bloom Creek	154.75		154.75		35.00		3.40	18.00		211.15
71.	Long Hike	61.64	7.74	69.38				3.50	15.60	5.00	93.48
72.	Long Meadow	122.47		122.47	22.50			13.20	18.00	4.25	180.42
73.	Upper Basin #1	28.50		28.50				1.60			30.10
74.	Gold Lookout	92.00	14.10	106.10	14.50			2.00	10.80		133.40
75.	Ladds Creek	51.64	30.33	81.97	3.00			29.00	30.00	8.25	152.22
76.	West Side McGary	217.50	56.03	273.53				29.20	19.20	16.50	338.43
77.	Starr	23.50		23.50	5.00				4.80		33.30
78.	Westside	114.00	36.14	150.14	11.50			9.20	24.00		194.84

1963—COST BREAKDOWN — INDIVIDUAL FIRES—SUPPRESSION ONLY (Continued)

Fire No.	Name	Wages FEE*	Wages FER**	Total Wages	Power Saw	Transports Dozers	Pumpers	Mileage	Meals	Plane	Total Cost
79.	Diamond Camp	156.29	17.16	173.45	15.00		20.00	6.00	48.00		262.45
80.	Tick Ridge		158.94	158.94				4.00	43.20	8.00	214.14
81.	Ikes Creek	\$ 33.00		\$ 33.00	\$ 12.00			\$ 2.00	\$ 4.80		\$ 51.80
82.	Squaw Creek	204.32	\$ 44.85	249.17				7.20	28.80	\$ 12.00	297.17
83.	Darrel	16.00		16.00	10.00			2.00		1.50	29.50
84.	Horseshoe Bend	175.17		175.17				12.60	25.20		212.97
85.	Parallel		No Cost Involved								
86.	Triangle		No Cost Involved								
87.	Camp L	11.59	24.64	36.23				6.20	7.20		49.63
88.	Thousand Loop	19.11	15.64	34.75				2.20	3.60		40.55
89.	Quick		12.90	12.90					2.40	4.10	19.40
90.	Shattuck	19.60		19.60	5.00						24.60
91.	Elk Butte Bypass	4.80		4.80				.20			5.00
92.	Jerico Peak	46.50		46.50				4.80	7.20		58.50
93.	Sam George	56.77	18.93	75.70	3.00		\$ 12.00	1.80	16.80	16.50	125.80
94.	Center	31.90		31.90				2.85	6.00	8.25	49.00
95.	Camp R	37.61	14.62	52.23				3.60	7.20		63.03
96.	Pivash	27.01		27.01				3.20	7.20		37.41
97.	Viewpoint		17.47	17.47				3.40	3.60	16.50	40.97
98.	Bishop Creek	22.96	6.94	29.90				8.00	3.60	5.00	46.50
99.	Grice Ridge	122.98	78.62	201.60			25.00	12.00	48.00		286.00
100.	Hiway	13.50		13.50				1.00			14.50
101.	Boulder	157.31	139.50	296.81	5.00		26.00	18.00	100.80	8.25	454.86
102.	White Pine	31.13		31.13				5.20	3.60	19.00	58.93
103.	Palouse	51.28		51.28				7.00	3.60	8.25	70.73
104.	Moose Meadow	85.58		85.58				2.00	24.00		111.58
105.	Boulder Peak	123.84	157.62	281.46	5.00		65.00	16.50	74.40	4.10	446.56
106.	O'Reilly	27.00		27.00							27.00
107.	Hemlock Cabin	31.35	31.35	62.70				6.80	22.60		92.10
108.	Four Corners	45.49	34.33	79.82				15.30	28.80		123.92
109.	Crescendo Peak	158.84		158.84				12.00	28.80	5.00	204.64
110.	Nellies	9.68	43.15	52.83				4.60	10.80		68.23
111.	Mary Mix	41.25	13.88	55.13				4.40	10.80	1.50	71.83
112.	Morris Cr. Ridge	22.62	7.09	29.71				5.80	3.60		39.11
113.	Camp 43	51.40		51.40	2.00			1.40	13.20	8.25	76.25
114.	Mamies	25.39		25.39				.80	10.80	2.50	39.49
115.	Soney Butte	54.97		54.97				5.05	16.80	2.50	79.32
116.	Homestead Hump	79.31	12.90	92.21				7.20	28.80	2.50	130.71
117.	Upper Basin #2	71.12		71.12	3.00			7.50	15.60	4.00	101.22
118.	Abel	12.59	29.80	42.39				3.40	7.20	8.50	61.49
119.	Elmberry Creek	9.71	19.68	29.39				4.00	8.40		41.79
120.	Steep Climb	11.58	7.75	19.33				2.40	7.20	2.50	31.43

1963—COST BREAKDOWN — INDIVIDUAL FIRES—SUPPRESSION ONLY (Continued)

Fire No.	Name	Wages FEE*	Wages FER**	Total Wages	Power Saw	Transports Dozers	Pumpers	Mileage	Meals	Plane	Total Cost
121.	Box Canyon .....	213.16	21.48	234.64				5.60	43.20	15.00	298.44
122.	Saturday .....	\$ 513.23	\$ 69.54	\$ 582.77	\$ 16.00	\$ 147.00	\$ 108.00	\$ 26.28	\$ 183.00		\$1,063.05
123.	Honey Tree .....	27.32		27.32				4.00		\$ 8.25	39.57
124.	Squaw Mountain .....	87.57	15.19	102.76				4.60	21.60		128.96
125.	Stanton Slash .....	37.80		37.80				2.40	7.20		47.40
126.	Smith Ridge .....	25.20		25.20				4.20	2.40		31.80
127.	Ruby Creek .....	242.71		242.71	2.00		16.00	9.60	67.50		337.81
128.	Hoodoo Cabin .....	6.22		6.22				2.00			8.22
129.	Swanson .....	52.95		52.95	1.00		2.00	1.20			57.15
130.	Hunter .....	6.39	7.76	14.15				3.60			17.75
131.	Rock Crusher .....	33.42		33.42				3.20	8.40		45.02
132.	Rodgers Ridge .....	11.67		11.67	1.00			3.20	2.40		18.27
133.	Ringsage .....	13.30		13.30				4.40	2.40		20.10
		\$13,174.44	\$2,655.12	\$15,829.56	\$388.00	\$1,618.25	\$1,981.25 35.22***	\$847.08	\$3,429.35	\$766.45	\$24,895.16

\*FEE—Fire Expense Emergency

\*\*FER—Fire Expense Regular

\*\*\*This item (\$35.22) was for gas and oil.

**WEATHER INFORMATION**  
**Observations taken at PTPA, Elk River, Idaho—1963**

Date	Prec.	Monthly Totals	Totals Carried Fwd.	Prec. During Fire Season
<b>May</b>				
1	.17		.17	
2	.11		.28	
3	.12		.40	
5	.32		.72	
8	.03		.75	
10	.02		.77	
12	.05		.82	
14	.02		.84	
24	<u>.02</u>	May .86	.86	
<b>June</b>				
1	.26		1.12	.26
4	.06		1.18	.32
5	.52		1.70	.84
6	.21		1.91	1.05
8	.05		1.96	1.10
9	.52		2.48	1.62
10	.34		2.82	1.96
17	.16		2.98	2.12
22	.01		2.99	2.13
24	.06		3.05	2.19
25	.16		3.21	2.35
26	.08		3.29	2.43
29	.25		3.54	2.68
30	<u>.02</u>	June 2.70	3.56	2.70
<b>July</b>				
10	.26		3.82	2.96
11	.06		3.88	3.02
18	<u>.01</u>	July .33	3.89	3.03
<b>August</b>				
4	.07		3.96	3.10
10	.05		4.01	3.15
12	<u>.31</u>	August .43	4.32	3.46
<b>September</b>				
2	.51		4.83	3.97
3	.02		4.85	3.99
13	.13		4.98	4.12
14	.76		5.74	4.88
16	.28		6.02	5.16
17	.03		6.05	5.19
21	.07		6.12	5.26
23	<u>.20</u>	Sept. 2.00	6.32	5.46
<b>October</b>				
5	.05		6.37	5.51
6	.03		6.40	5.54
9	.02		6.42	5.56
10	.11		6.53	5.67
21	.02		6.55	5.69
23	.68		7.23	6.37
24	.05		7.28	6.42
25	.52		7.80	6.94
26	.02		7.82	6.96
29	.02		7.84	6.98
31	<u>.02</u>	October 1.54	7.86	7.00

**COMPARISON OF MONTHLY PRECIPITATION  
TAKEN AT ELK RIVER, IDAHO**

	1963	1962	1961	1960	1959	1958	1957	1956	1955	1954	1953	1952	1951
June	2.70	1.39	1.31	1.29	2.36	4.38	1.55	2.19	2.14	3.59	1.32	3.80	2.16
July	.33	.20	.24	.12	.09	1.14	.49	1.11	1.84	.57	0.00	.30	.93
August	.43	.96	.51	2.45	1.17	.57	.64	2.38	.03	3.67	1.25	.42	.46
3 Month Total	3.46	2.55	2.06	3.86	3.62	6.09	2.68	5.68	4.01	7.83	2.57	4.52	3.55
September	2.00	2.54	2.23	.90	7.79	2.90	.33	1.29	2.60	.63	.52	.49	1.51
4 Month Total	5.46	5.09	4.29	4.77	11.41	8.99	3.01	6.97	6.61	8.46	3.09	5.01	5.06
	1950	1949	1948	1947	1946	1945	1944	1943	1942	1941	1940	1939	1938
June	4.76	1.85	4.54	4.19	3.18	1.24	2.54	3.82	3.86	3.49	1.00	2.33	2.05
July	1.35	.33	5.11	.27	.95	.12	.11	.83	1.39	.49	2.49	.63	.40
August	.30	.07	1.16	.38	0.00	.61	1.17	.64	.36	1.85	.02	.05	.52
3 Month Total	6.41	2.25	10.81	4.84	4.13	1.97	3.82	5.29	5.61	5.83	3.51	3.01	2.97
September	.37	2.31	1.12	2.41	1.69	3.49	2.38	.27	.51	4.42	4.06	.85	1.97
4 Month Total	6.78	4.56	11.93	7.25	5.82	5.46	6.20	5.56	6.12	10.25	7.57	3.86	4.94
	1937	1936	1935	1934	1933	1932	1931	1930	1929	1928	Total	Average 36 Year	
June	3.94	3.41	1.77	3.31	2.63	.99	.60	2.08	2.54	1.13	91.43	2.54	
July	.33	.44	.27	.19	.27	.41	.34	.95	.12	.65	25.80	.72	
August	.68	.12	.80	0.00	.74	.14	.07	.58	.14	.13	25.47	.71	
3 Month Total	4.95	3.97	2.84	3.50	3.64	1.54	1.01	3.61	2.80	1.91	142.70	3.96	
September	.74	.79	.57	.64	2.49	.63	2.00	1.52	.27	.54	61.77	1.72	
4 Month Total	5.69	4.76	3.42	4.14	6.13	2.17	3.01	5.13	3.07	2.45	204.47	5.68	

**FIRE OCCURRENCE OVER A 40 YEAR PERIOD  
(1924-1963 Inclusive)**

	40 Year Total		40 Year Average Number
	Number	Percent	
Lightning Fires	1,748	69%	43.7
Man Caused Fires	771	31%	19.3
Total	2,519	100%	63.0

**BREAKDOWN OF FIRES**

Lightning	1,748	69%	43.7
Unknown	61	2%	1.6
Brush Burning	92	4%	2.3
Campers and Hunters	149	6%	3.7
Railroad	24	1%	.6
Smokers	226	9%	5.6
Incendiary	105	4%	2.6
Miscellaneous	114	5%	2.9
Total	2,519	100%	63.0

**TABLE NO. 1—1963**

**Showing Fires by Cause, Extent of Loss, Class and Acreage Inside Association Boundary**

	Lightning	Un- known	Brush Burning	Campers Hunters	Smok- ers	Misc.	Total
Number of Fires	121	3		5		4*	133
Percent	91.0	2.2		3.8		3.0	100%
Acreage	17.25	6.00		2.50		43.87	69.62
<b>Class of Fire</b>							
'A'	109	1		4		2	116
'B'	12	2		1		2	16
'C'						1	1
Loss M.B.F.	14.5					23.5	38
Loss Poles							none

\*Smoking Out Bees ..... 2  
 Debris Burning ..... 1  
 Logger ..... 1  
 —————  
 4

**TABLE NO. 2—1963**

	Lightning	Un- known	Brush Burning	Campers Hunters	Smok- ers	Misc.	Total
Cut-over	37	2		2		4	45
Mer. Timber	49	1		2			52
BO & Grass Land	4			1			5
Reproduction	31						31
Totals	121	3		5		4	133

**TABLE NO. 3—1963**  
**FIRES IN FUEL TYPES**

	Extreme High	High	Normal	Total
Acreage in Association	9.280	7.780	452.619	469.679
Percent of Area	2.0%	1.7%	96.3%	100%
Fires Expected	3	6	32	41
Actual No. of Fires	5	29	99	133
Percent	3.8%	21.8%	74.4%	100%

**LIGHTNING STRIKE REPORT—1963**

	Cedar	W. Fir	W. Pine	R. Fir	Larch	Y. Pine	Hem-Spruce	lock	Duff	Total	Per-cent
Live	14	32	13	7	8	0	0	7	0	81	67%
Dead	1	30	4	3	1	0	0	1	0	40	33%
Total Reported										121	100%

**P.T.P.A.**

**8 Year (1956-1963) Combined**

Live	41	84	51	18	15	7	1	17	0	234	64%
Dead	17	57	31	11	8	1	1	6	2	134	36%
Total Reported										368	100%

**P.T.P.A. - C.T.P.A.**

**8 Year (1956-1963) Combined**

Live	86	221	98	35	29	16	1	20	0	506	67%
Dead	35	112	46	21	13	14	2	6	2	251	33%
Total Reported										757	100%

**AIRPLANE USAGE—1963**

Item	Assn. Plane Hours	Rented Plane Hours	Total Hours
Fire Patrol and Directing Men to Fires (Buzzing men to fires, detecting, Fire Locating, etc.)	62.01	207.16	269.17
Equipment Service (Repair Equipment, Parts Delivery, Mechanic Transportation)	11.02		11.02
Inspection Trips, Slash & Road Inspection	7.19		7.19
Overhaul, Run-in Test and Maintenance (Association Plane)	3.58		3.58
Employee Passenger Service	10.54	3.18	13.72
Search and Rescue	.78		.78
Ambulance Service	4.00		4.00
Fire School Training Program		2.13	2.13
Excess Property	7.69		7.69
<b>Total Hours</b>	<b>106.81</b>	<b>212.47</b>	<b>319.28</b>



**AIR PATROL VALUE—1963**

	Number	Percent
Fires First Discovered by Lookouts	43	32%
Fires First Discovered by Air Patrol	45	34%
Fires First Discovered by Others	45	34%
Total Number of Fires	133	100%
Fires in Which Airplanes Used for Location	50	
Airplanes Used for Buzzing (Directing Men)	55	
TOTAL Number of Fires on which Airplanes were used (Supply, Buzzing, Location, Discovery, etc.)	73	

**TANKER USE**

Total fires on which tankers were used 21  
 Total hours tankers used 1,125½  
 One fire had 5 tankers in use, one fire had 3 tankers in use and 3 fires used 2 tankers on each.  
 Tanker size varied from 300 gallon to 1,000 gallon.  
 Size of fires varied from under ¼ acre to 43.12 acres.

**AIR COST BREAKDOWN—1963**

Regular Fire Patrol .....	\$2,141.72
Passenger Service, Association Employees .....	50.93
Fire Training Program .....	34.00
Locating and Buzzing (Directing) Men to Fires .....	932.81
<b>TOTAL COST—VALLEY AVIATION .....</b>	<b>\$3,159.46</b>
Association Plane—Repairs, Gas, Oil, Inspection etc. (Pilot's Wages Not Included*) .....	252.29
<b>TOTAL AIR COSTS FOR YEAR .....</b>	<b>\$3,411.75</b>
Less Credit Hazard Reduction Account .....	\$1,705.88
<b>TOTAL P.T.P.A. COSTS .....</b>	<b>\$1,705.87</b>

\*Pilot is Association employee on regular work schedule and used as pilot when he is needed.  
 December 11, 1963

**LOOKOUTS—1963**

Lookout Name	Tower Constrc.	Condition	Used—1963
Boehls Butte	Wood	Fair	Yes-3
Elk Butte	Steel	Good	Yes
Freezout	Wood	Good	Yes
Gold Butte	Wood	Poor	No
Hemlock	Wood	Fair	Yes-2
Jericho	Wood	Fair	Yes-2
Little Green Mountain	Wood	Poor	No
Mason Butte	Steel	Good	Yes
McGary Butte	Wood	Good	Yes
Stocking Meadows	Wood	Good	Yes-3

Patrol Point—2

Patrol Frequently—3

## 1963 PRODUCTION

## Total Log Production from Operators

Holding Contracts with F.M.A. (Feetage)	158,065,120	
Dollars Received from Above .....		\$158,840.75

## Total Log Production from Compliance

	(Feetage)	5,431,420	
And Cash Bond Operators .....	(Cords)	73.0	
Dollars Received from Above .....			\$ 5,932.69

Total Log Production .....	(Feetage)	163,496,540	
	(Cords)	73.0	
Total Money Received From Logs .....			\$164,773.44

## Total Cedar Production from Operators

## Holding Contracts with F.M.A.

30' and shorter .....	948	
35' and longer .....	16,299	

Total Cedar Poles .....	17,247	
Posts .....	3,378	

Dollars Received from Above .....		\$ 9,422.14
-----------------------------------	--	-------------

Total Cedar Pole Production from Compliance  
And Cash Bond Operators

30' and shorter .....	143	
35' and longer .....	1,312	

Total Cedar Poles .....	1,455	
Shake Board .....	3,200	
Posts .....	48,809	

Dollars Received from Above .....		\$ 1,096.29
-----------------------------------	--	-------------

## Total Cedar Production

30' and shorter .....	1,091	
35' and longer .....	17,611	

Total Cedar Poles .....	18,702	
Shake Board .....	3,200	
Posts .....	52,187	

Total Money Received from Cedar .....		\$ 10,518.43
---------------------------------------	--	--------------

Total Dollars Received from All Operations		\$175,291.87
--	--	--------------

**BALANCE STATEMENT**  
**Close of Business—November 30, 1963**

**Assets:****Current**

Idaho First National Bank, Potlatch .....		\$ 4,621.42*
Accounts Receivable—Sundry .....	\$ 3,011.84	
Assessments, Receivable .....	392.70	
Merchandise Inventory—		
Provisions & Supplies .....	4,799.02	
State Insurance Fund .....	250.00	8,453.56
Total Current Assets .....		3,832.14

**Fixed**

Camp Equipment & Tools .....	5,267.55	
Radio System .....	2,066.96	
Road Equipment & Machinery .....	631.94	
Livestock & Equipment .....	72.02	
Headquarters Buildings .....	8,052.64	
Motor Vehicles .....	1,625.29	
Telephone System .....	2,139.04	
Total Fixed Assets .....		19,855.44
Total Assets .....		\$ 23,687.58

**Liabilities:**

Grazing Fees Payable .....	4,214.80	
State Withholding Tax .....	158.52	
Surplus—Present Worth, Nov. 30, 1963 .....	19,314.26	
Total Liabilities and Surplus .....		\$ 23,687.58

\*—Credit Balance

**OPERATING REPORT**  
December 1, 1962 to November 30, 1963

**Revenue:**

Membership Assessments .....	\$ 46,690.88
Non-Member Assessments .....	2,699.14
Other Income .....	40.00
Forest Service—Protection Charges .....	20,189.32
Dept. of Interior—Protection Charges .....	873.43
Federal Contributions— Clarke-McNary Funds .....	20,799.52
Wanigan .....	66.90
<hr/>	
Total Operating Revenue .....	91,359.19
Grazing Fees Collected .....	4,214.80
<hr/>	
Gross Revenue .....	\$ 95,573.99

**Expenses:**

Fire Expense—Regular Men .....	\$ 4,169.51	
Fire Expense—Emergency Men .....	14,459.63	18,629.15
<hr/>		
Headquarters Expense .....		16,139.27
Salary & Expense, Chief Fire Warden .....		4,871.92
Workmen's Compensation Ins. ....		1,285.17
Lookout Development & Maintenance .....		941.29
Maint. of Livestock & Equipment .....		38.45
Maint. of Radio System .....		1,998.86
Main Office Expense .....		6,512.57
Maint. Road Equipment & Machinery .....		4,415.32
Maint. Headquarters Buildings .....		611.01
Maint. & Operation Motor Vehicles .....		7,535.77
Maint. of Established Roads & Trails .....		5,575.87
Maint. of Telephone System .....		2,630.56
Patrolling, Smokechasing & Lookout Watchmen .....		16,511.97
Airplane Patrol .....		1,705.87
New Road & Trail Buildings .....		448.07
Miscellaneous Expense .....		1,600.65
Insurance .....		3,450.83
State Unemployment Tax .....		2,715.06
Federal Unemployment Tax .....		443.94
Federal Insurance Contributions Act .....		2,472.05
<hr/>		
TOTAL .....		\$100,533.65

**Depreciation Deductions:**

Camp Equipment & Tools .....	\$ 2,209.10	
Radio System .....	347.68	
Road Equipment & Machinery .....	15.39	
Livestock & Equipment .....	34.86	
Headquarters Buildings .....	894.74	
Motor Vehicles .....	385.10	
Telephone System .....	267.38	4,154.25
<hr/>		
Total Expense and Depreciation .....		\$104,687.90
Grazing Fees to be distributed .....	4,214.80	
Blister Rust Contributions .....	8,754.55	12,969.34
<hr/>		
Total Gross Expense .....		\$117,657.24
Net Loss for Period to Surplus .....		\$ 22,083.25

**POTLATCH TIMBER PROTECTIVE ASSOCIATION**

**Acreeage and Assessment of Members**

**1 9 6 3**

	<b>Acreeage</b>	<b>Assessment No. 1 10c</b>	<b>Assessment No. 2 3c</b>	<b>Blister Rust Assessment 3c</b>	<b>Total Assessment 16c</b>	<b>Amount Paid Prior To Nov. 30, 1963</b>	<b>Balance Due</b>
L. Cardiff .....	160	\$ 16.00	\$ 4.80	\$ 4.80	\$ 25.60	\$ 16.00	\$ 9.60
Diamond National Corporation .....	22,870	2,287.00	686.10	686.10	3,659.20	3,659.20	-----
Joslyn Mfg. & Supply Company .....	43	4.30	1.29	1.29	6.88	4.30	2.58
Mead & Howard Lumber Company ..	4,447	444.70	133.41	133.41	711.52	444.70	266.82
Milwaukee Land Company .....	6,464	646.40	193.92	193.92	1,034.24	1,034.24	-----
Northern Pacific Railway Co. ....	1,895	189.50	56.85	56.85	303.20	189.50	113.70
Potlatch Forests, Inc. ....	132,022	13,202.20	3,960.66	3,960.66	21,123.52	21,123.52	-----
State of Idaho .....	123,917	12,391.70	3,717.51	3,717.51	19,826.72	19,826.72	-----
	291,818	\$29,181.80	\$ 8,754.54	\$ 8,754.54	\$46,690.88	\$46,298.18	\$ 392.70

Assessment No. 1 of 10c per acre was levied August 8, 1963

Assessment No. 2 of 6c per acre, including Blister Rust Assessment was levied November 1, 1963

**GRAZING FEES COLLECTED\***  
1963

	Sheep	Cattle	Dollars
Ray Blankenship .....	566		266.40
A. R. Bowman .....		50	100.00
Edwin Brosten .....		71	142.00
Clearwater Outfitters .....		35	70.00
Dicks Creek Cattlemen's Association .....		528	1,056.00
N. E. Heah & Son .....		44	88.00
Dan Kress .....		31	62.00
McGregor Land & Livestock .....	2136		854.40
North Fork Cattlemen's Association .....		95	190.00
Floyd E. Parker .....		05	10.00
Dan McKinney & Sons .....		10	20.00
	<hr/>	<hr/>	<hr/>
	2702	869	2,818.80
U. S. F. S. Collections .....	420	614	1,396.00
	<hr/>	<hr/>	<hr/>
Totals .....	3122	1483	4,214.80

\*—Does Not Include Livestock on U. S. F. S. Lands

**GRAZING FEES DISTRIBUTED**

	Acreage	Factor	Amount
L. Cardiff Inc. ....	160	.00055	2.32
Diamond National Corporation .....	22870	.07837	330.31
Joslyn Mfg. & Supply Co., Inc. ....	43	.00015	.64
Mead & Howard Lumber Company ...	4447	.01524	64.23
Milwaukee Land Company .....	6464	.02215	93.36
Northern Pacific Railway Company ..	1895	.00649	27.35
Potlatch Forests Inc. ....	132022	.45241	1,906.82
State of Idaho .....	123917	.42464	1,789.77
	<hr/>	<hr/>	<hr/>
Totals .....	291818	1.00000	4,214.80

0020600 8786264

