

Day - NW  
SD  
421  
P7  
1923

DAY - NW COLLECTION  
UNIV. OF IDAHO LIBRARY

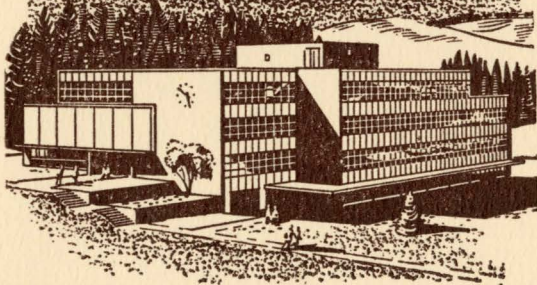
SCHOOL OF FORESTRY  
UNIVERSITY OF IDAHO  
MOSCOW, IDAHO

*Third Annual Report*  
*of the*  
Priest Lake Timber  
Protective Association



For the Year 1923

UNIVERSITY  
OF IDAHO  
LIBRARY



DAY - NW COLLECTION  
UNIV. OF IDAHO LIBRARY  
SCHOOL OF FORESTRY  
UNIVERSITY OF IDAHO  
MOSCOW, IDA.

*Third Annual Report*  
*of the*  
Priest Lake Timber  
Protective Association

---

OFFICERS

Ben E. Bush .....President  
J. Jensen .....Secretary-Treasurer  
R. A. Phillips .....Fire Warden

---

DIRECTORS

Ben E. Bush      I. H. Nash      E. C. Olson

---

For the Year 1923



Diamond Match Company's sale on state land on Big Creek showing immature timber left after logging.

1911 U. S. GEOLOGICAL SURVEY  
WATER RESOURCES DIVISION

Day-NW  
SD  
421  
P7  
1923

## REPORT OF FIRE WARDEN

The fire season for 1923 has probably been the most favorable one since 1916. The season started late due to frequent rains during June and the early part of July. Favorable conditions prevailed throughout the summer and not until about September 1, did fire threaten to spread to any extent in green timber. From that date until September 20, a period of drought occurred and one fire near the "Lion's Head" gave considerable trouble. This fire started August 20, from lightning in Alpine timber on a site where fire fighting was extremely difficult due to the rugged rocky character of the ground. As it threatened to back down into merchantable timber on Lion Creek, it was necessary to hold it in check until rain came.

Weather forecasts were received by wireless at the Priest River Experiment Station and broadcasted to all protective men who had telephone communication. These forecasts were directly beneficial and served to keep the lookouts and smokechasers on their toes and as the forecasts worked out on schedule for several severe lightning storm periods, the protective organization placed considerable reliance on the predictions. Local storms however, could not be forecasted with any degree of accuracy.

Experiments under way at the Priest River Experiment Station relative to the moisture content of the inflammable material forming the soil covering gives promise to a very great future value as a means of foretelling critical fire conditions sufficiently in advance to permit of strengthening protection forces.

### IMPROVEMENT CONSTRUCTION

New improvements consisted principally of the construction of a trail and telephone line to the proposed lookout at the head of the South Fork of Hunt Creek. Early in June Supervisor Fitzwater and Ranger Ward established the location for this project and a 6-man crew was employed on the construction work throughout the fire season.

Considerable work was accomplished by the Experiment Station lookout smokechaser, Frank Moore, in the construction of approximately 3 miles of new trail in his district.

This trail was constructed in addition to his regular duties and is passable to pack stock. Moore and Ranger Kelley are to be commended on this work.

Smokechaser Ira Gleason, also accomplished very creditable work under the direction of Ranger Kelley in the construction of a quarter of a mile of graded trail and the cutting of material for the construction of a lookout tower at Whitetail Butte in addition to his regular duties.

#### IMPROVEMENT MAINTENANCE

All trails were cleared out and telephone lines gone over and repaired by the protection force prior to the opening date of the fire season. This work gave the members of the organization a chance to become familiar with their districts before the fire season was actually upon them.

#### PROTECTIVE ORGANIZATION

The protective organization consisted of sixteen men distributed as follows :

*Assistant to Ranger	Coolin
*Office Assistant	Beaver Creek
Boat Patrolman	Coolin
Packer	Beaver Creek
Smokechaser	Coolin
Smokechaser	Indian Creek
Smokechaser	Two Mouth Creek
Smokechaser	Lookout Mountain
Lookout	Lookout Mountain
Smokechaser	Upper Priest Lake
Smokechaser	Upper Priest River
**Assistant to Ranger	Benton Ranger Station
Smokechaser	East River
*Lookout	Experiment Station
**Smokechaser	Experiment Station, L. O.
Smokechaser	Falk's Ranch

\*-50% of salary paid by Forest Service

\*\*--25% of salary paid by Forest Service

Five head of pack stock were maintained at Beaver Creek due to the difficulty met in getting pasture in the vicinity of Coolin. In the future as for this year, it is planned to retain this string of horses at Beaver Creek where they will do the packing on Forest Service, as well as Association

territory. The string of Government stock at the Bismark Ranger Station will then be available to handle the packing for both sides of the Lake in Ranger Ward's district.

The pack stock is now wintered near Plains, Montana, but with the development of the Bismark Ranger Station meadow, it is quite probable that the stock can be wintered with the Government stock in the future, which is desirable in that it will eliminate a long drive to winter pasture and return at a considerable expense.

On completion of the telephone line and trail project connecting up the lookout point at the head of the South Fork of Hunt Creek, a lookout position for that location will be necessary.

The horse patrol on the Priest River-Coolin road accomplished at the present time by means of two men stationed at Falk's ranch and near Whitetail Butte, respectively, is not satisfactory and it is planned to replace this patrol with a light Ford truck which will be held at the Benton Station for smokechaser duty. The Whitetail lookout point should be equipped with a 40-foot observation tower and a lookout man kept permanently at this point.

The replacement of the horse patrol will save in the neighborhood of \$175.00 each year in horse hire and feed, and will also materially strengthen the protective organization in that these men filling the positions will be in constant touch with telephone. One of the men now engaged on horse patrol will fill the position of Whitetail Butte lookout and the other will be assigned to the Benton Station.

The patrol as in effect during the past year was ineffective in that the patrolmen were in touch by telephone communication only occasionally during the day and as all travel was directly through the territory patrolled, there was little, if any, opportunity afforded for contact with the public. When a fire did actually occur on either patrolman's district, it was impossible to know just what action they were taking and it was necessary to send out a smokechaser from ranger headquarters as a safety measure.

This territory is admirably covered by several lookouts and the matter of getting prompt action on reported fires is the greatest problem.

### LAW ENFORCEMENT

Two cases were prosecuted and convictions obtained for burning without a permit. A fine of \$10.00 and costs was assessed in each case.

### FIRE PREVENTION CAMPAIGN

The territory covered by the Association receives the same concentrated effort in the application of educational measures in connection with fire prevention campaigns that is being put forth throughout North Idaho.

Once a year, during Forest Protection Week, the local force make a concentrated effort to meet either individually or in groups every man, woman and child and solicit their aid and co-operation for the ensuing season. The Ranger puts on programs at the local schools in his district, meets personally as many of the local settlers as possible, posts new and replaces dilapidated fire signs throughout his territory. The larger towns and those remotely located are generally worked by the Supervisor's staff.

This coming winter it has been arranged that illustrated lectures will be given before local schools and organizations. A number of slides have been prepared, depicting local logging operations, activities and scenes that will aid much in the way of local interest to these lectures.

In this connection it is highly desirable and is recommended that a special effort be made to obtain photographs of the logging operations on the State sale areas under contract to the Diamond Match Company on Big and Fox Creeks. An item covering this expense should be included in the 1924 budget.

### FIRES

Eighteen fires occurred and only one fire attained a size of over one-fifth of an acre. The damage was unusually small. The following tabulation gives a classification of causes.

Lightning . . . . .	13
Campers . . . . .	1
Smokers . . . . .	3
Brush burning . . . . .	<u>1</u>
Total . . . . .	18





## PROPOSED IMPROVEMENT PROJECTS

### *Hunt Creek Trail and Telephone Line :*

About \$250.00 is necessary to finish this project.

\$1123.31 spent on this project in 1923.

Total cost to complete project estimated for 1924, \$250.00

## MISCELLANEOUS TRAIL PROJECTS

### *Experiment Station-Bald Mountain Telephone Line :*

A telephone line  $2\frac{1}{2}$  miles in length between these points is highly desirable as Bald Mountain, a Pend Oreille Protective Association lookout, covers considerable territory that is not visible from the Experiment Station lookout.

Two and one-half miles of telephone line at  
\$90.00 per mile . . . . . \$ 225.00

### *Whitetail Butte Lookout Tower :*

A 40-foot tower is needed at this point which is an admirable lookout for the main Priest River Valley and a great part of East River.

The cost of this improvement is estimated at . \$ 150.00

### *Miscellaneous Trail Projects :*

Many of the drainages in the north end of the Association are without trails and travel in these localities is therefore difficult and slow. For quick action on reported fires a suitable trail system is essential. A few men that we employ for smoke-chasers of the type of Cougar Gus Johnson, can find their way by a comparatively easy route to nearly any part of their district ; however, for the man not thoroughly familiar with the country this is impossible.

It is proposed to put in two-man crews for the purpose of cutting out trails that will open up each of the principal drainages that are now without suitable trails. These men must be experienced woodsmen and one of them at least should be familiar with the country. They will cut out a trail on a uniform grade if possible, and sufficiently wide for pack horses, but will not grade a trail except where the

slope exceeds 60%, as horses can easily keep footing on any slope under this maximum. Trails which are rarely traveled do not justify a heavy first cost and a resultant heavy maintenance cost yearly.

Trails of the character above mentioned should not cost in excess of \$50 per mile, whereas a good class of graded trail would average from \$150 to \$200 per mile. These men would in addition form a valuable supplement to the protective organization.

Four men in crews of two men each for two and one-half months at \$105.00 per man per month, ten man months at \$105.00 . . . . . \$1050.00

*Summary of Improvements Proposed for 1924 :*

Hunt Creek Trail and Telephone Line . . . . .	\$ 250.00
Experiment Station-Bald Mt. Telephone Line . . . . .	225.00
Whitetail Butte Lookout Tower . . . . .	150.00
Two 2-man crews on trail work, East River and Two Mile Creek . . . . .	1050.00
Total . . . . .	<u>\$1675.00</u>

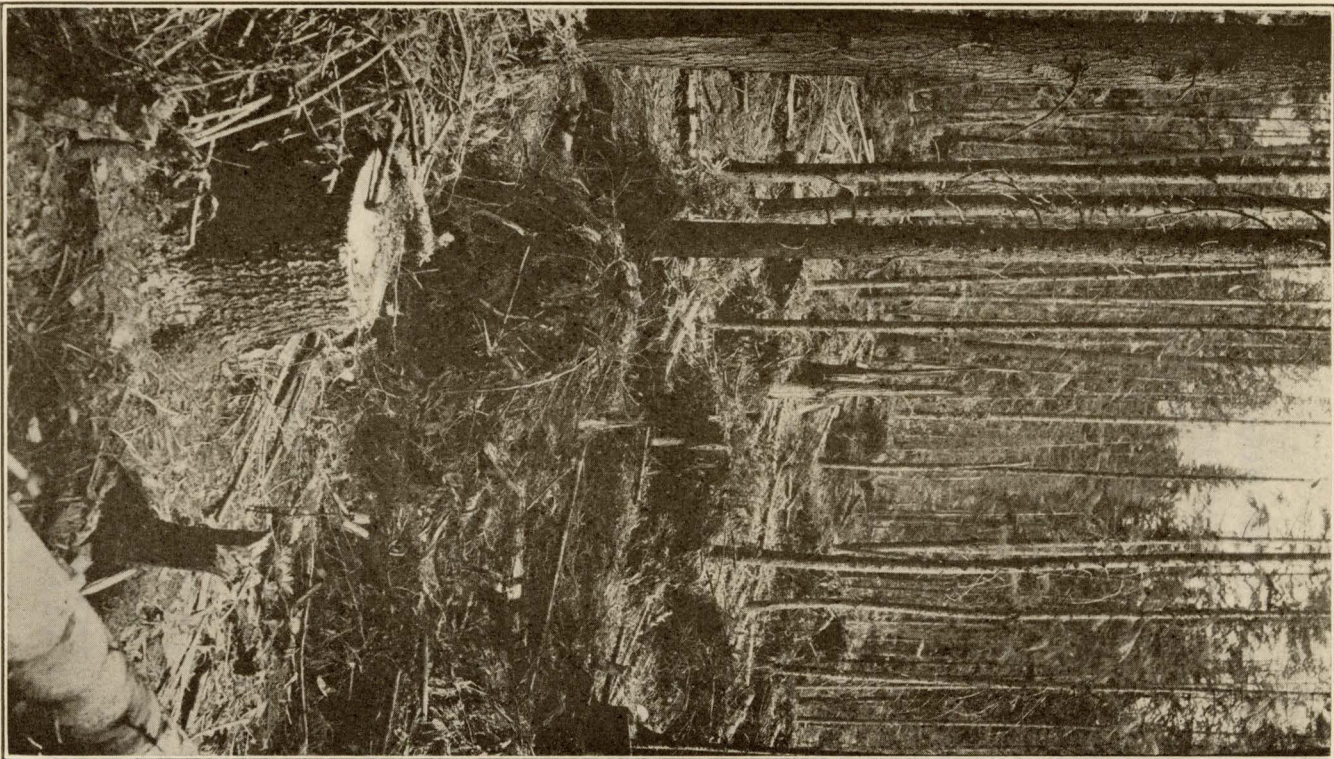
*Equipment :*

It is recommended that the following equipment be purchased :

One Ford light delivery truck . . . . .	\$ 450.00
One Evinrude motor . . . . .	120.00
Three mules at \$90 . . . . .	270.00
Two Decker Saddles at \$18 . . . . .	36.00
One riding saddle . . . . .	50.00
Miscellaneous equipment . . . . .	100.00
Total . . . . .	<u>\$1026.00</u>

Submitted January 8, 1924,  
at Sandpoint, Idaho.

R. A. PHILLIPS,  
Fire Warden.



A timber sale area on state land. Merchantable timber removed and brush in process of disposal without damage to remaining stand.

# FINANCIAL STATEMENT

JANUARY 9, 1924

## RECEIPTS

(November 29, 1922—January 9, 1924)

Balance on hand, November 29, 1922.....		\$2,377.98
<b>Assessments (1923)</b>		
Dalkena Lumber Co.—		
371 Acres		
July 25.....	\$ 7.42	
October 6.....	7.42	14.84
Diamond Match Co.—		
24,929.22 Acres		
July 25.....	498.58	
September 20.....	498.58	997.16
Northern Pacific Ry.—		
3,887.96 Acres		
July 25.....	58.32	
October 6.....	58.32	116.64
State of Idaho—		
177,585.28 Acres		
July 30.....	3,551.70	
September 20.....	3,551.70	7,103.40
Bonners Ferry Lumber Co.—		
640 Acres		
July 25.....	12.80	
September 20.....	12.80	25.60
Weeks Law—		
July 25.....	506.00	
October 9.....	81.40	
December 1.....	1,287.00	
December 13.....	434.00	2,308.40
<b>Miscellaneous Income</b>		
March 3 Sale of horse.....	1.50	\$12,945.52

## DISBURSEMENTS

Miscellaneous Salaries and Wages.....	\$7,555.75	
Substance Supplies.....	1,950.31	
Travel.....	211.24	
Supplies and Equipment .....	650.84	
Rent, Heat, Light .....	14.00	
Freight, Drayage and Express .....	317.88	
Forage .....	360.23	
Insurance (and Bonds) .....	142.55	\$11,202.80
Balance on hand, January 9, 1924.....		1,742.72

## RECAPITULATION OF DISBURSEMENTS

### SHOWING PROJECT OR ACTIVITY COSTS

Headquarters and Administration—

Clerk Hire.....	\$ 152.78	
Office Expense.....	51.48	
Overhead, U.S.F.S.....	1,932.46	
Bonds, Administrative .....	10.00	
Insurance, Employees' .....	132.55	
Travel.....	<u>90.50</u>	\$ 2,369.77

Fire Prevention—

Camp Equipment, plus Freight.....	322.54	
Motor Boat, Gas, Etc.....	161.76	
Winter Pasture, Horses including Labor.....	160.74	
Horse Expense, Forage, Etc .....	268.25	
Labor, Guards, Etc.....	3,729.92	
Travel, Guards, Etc.....	<u>133.64</u>	4,776.85

Construction—

*Hunt Creek Trail:*

Miscellaneous Supplies.....	3.87	
Motor Boat Supplies.....	16.19	
Forage and Freight.....	22.89	
Labor .....	1,070.36	
Travel, Laborers .....	<u>10.00</u>	1,123.31

*Hunt Creek Telephone Line:*

Miscellaneous Supplies.....	3.88	
Motor Boat Supplies .....	14.61	
Forage and Freight.....	22.90	
Labor .....	723.82	
Travel.....	<u>5.75</u>	770.96

*Soldier Creek Trail:*

Labor .....	<u>33.60</u>	33.60
-------------	--------------	-------

*East River Trail:*

Labor .....	<u>22.00</u>	22.00
-------------	--------------	-------

Maintenance—

*Trails:*

Miscellaneous Supplies.....	.90	
Motor Boat Supplies.....	2.50	
Forage .....	6.00	
Labor .....	650.26	
Travel.....	<u>7.50</u>	667.16

*Telephone Lines:*

Miscellaneous Supplies.....	58.43	
Motor Boat Supplies .....	2.75	
Forage .....	6.34	
Labor .....	<u>227.00</u>	294.52

<i>Camp Equipment, including Buildings:</i>		
Labor .....	\$ 113.15	\$ 113.15
Suppression—		
<i>Lion Head Fire:</i>		
Motor Boat Supplies .....	12.33	
Forage .....	56.36	
Labor .....	730.89	
Travel.....	14.00	813.58
<i>Indian No. 2:</i>		
Labor .....	22.22	22.22
<i>Camp 5:</i>		
Labor .....	20.19	20.19
<i>Bogle:</i>		
Labor .....	12.45	12.45
<i>Caribou:</i>		
Labor .....	4.20	4.20
<i>Two Mouth No. 1:</i>		
Labor .....	11.61	11.61
<i>Rocky Ridge:</i>		
Labor .....	12.61	
Travel.....	1.00	13.61
<i>Green Bonnet:</i>		
Labor .....	12.61	12.61
<i>Trapper No. 1:</i>		
Labor .....	4.20	4.20
<i>Misc.:</i>		
Labor .....	12.11	12.11
<i>Pierson:</i>		
Labor .....	48.66	48.66
<i>Lamb Creek:</i>		
Labor .....	7.33	7.33
<i>Hanson Ranch:</i>		
Labor .....	7.33	7.33
<i>Gold Creek Pass:</i>		
Labor .....	8.41	8.41
<i>South Fork Hunt Creek:</i>		
Labor .....	32.97	32.97
Total.....		\$11,202.80

#### Summary of Disbursements

Headquarters and Administration.....	\$2,369.77	
Fire Prevention.....	4,776.85	
Construction .....	1,949.87	
Maintenance .....	1,074.83	
Fire Suppression .....	1,031.48	\$11,202.80

## RECONCILIATION OF BANK STATEMENT

**BONNER COUNTY NATIONAL BANK**  
**Sandpoint, Idaho, January 1, 1924**

Balance on deposit .....	\$1,782.72	
Deduct checks outstanding: No. 661 Earl Williams	40.00	
Balance on deposit as shown by records of P. L.		
T. P. A.....		<u>\$1,742.72</u>
	<u>\$1,742.72</u>	<u>\$1,742.72</u>

I hereby certify the above to be a correct statement of account as of date January 1, 1924; the records of the Priest Lake Timber Protective Association being closed as of date January 8, 1924, no disbursements being made after December 12, 1923, to time of closing of said records, as shown by Journal of the Priest Lake Timber Protective Association.

FRED E. ALLEN, Accountant.



## BALANCE STATEMENT

**PRIEST LAKE TIMBER PROTECTIVE ASSOCIATION, JAN. 8, 1924**  
 (After Closing—Season 1923)

### ASSETS

<i>Current</i>	
Cash in bank .....	\$1,742.72
<i>Fixed</i>	
Buildings, valuation previous to 1923.....	\$1,295.00
Less depreciation, 10%.....	129.50
	1,165.50
Camp Equipment, valuation previous to 1923.....	1,573.75
Less depreciation 25%.....	393.43
	<u>\$1,180.32</u>
Plus purchases 1923.....	212.63
	1,392.95
Horses, Saddles and Harness, val. previous to 1923	\$ 390.02
Less depreciation, 20% .....	77.70
	<u>\$ 312.32</u>
Plus purchases 1923 .....	29.99
	342.31
Motor Boats, boats and launch val. prev. 1923.....	\$ 706.00
Less depreciation 20%.....	141.20
	<u>\$ 564.80</u>
Plus purchases 1923 .....	49.94
	614.74
Telephone Lines, valuation previous to 1923.....	\$1,885.00
Less depreciation 15% .....	282.75
	<u>\$1,602.25</u>
Plus purchases 1923 .....	1,014.51
	<u>2,616.76</u>
	<u>\$7,874.98</u>

### LIABILITIES

<i>Current</i>	
None Known	
<i>Fixed</i>	
Proprietorship .....	\$6,132.26
Surplus.....	<u>1,742.72</u>
	<u>\$7,874.98</u>

STATE EXAMINER'S CERTIFICATE

STATE OF IDAHO

DEPARTMENT OF FINANCE

Boise, Idaho, February 25, 1924

HON. C. C. MOORE  
Governor of Idaho  
Capitol Building

DEAR SIR:

I submit herewith a report of my audit of the accounts of the Priest Lake Timber Protective Association, principal place of business, Sandpoint, Idaho.

The fiscal year of this Association covers the period commencing December 1, 1922, and ending January 9, 1924.

The records were complete, and accurately kept. All cash received, as shown by the records, was accounted for. The disbursements appeared to be regular in character, reasonable in amounts and necessary to a proper functioning of the Association. The Auditing Committee did not have time to pass on the disbursement vouchers before my audit was completed but I was assured this would be done at a later date.

Respectfully submitted,

B. E. HYATT,  
Director Bureau of Public Accounts.

## NON-EXPENDIBLE EQUIPMENT PURCHASED DURING SEASON 1923

No.	ARTICLE	COST	
1	Anvil, 80lb.....	\$10.00	
18	Axes, D.B.....	33.30	
3	Arrestors, Vacuum.....	5.10	
1	Basket, wire, waste.....	.55	
1	Brace, carpenter, 146B.....	4.65	
3	Bags, water, 5 gal. manpack.....	12.00	
1	Board, wash.....	.90	
1	Board, Koch, lookout.....	2.50	
2	Bells, extension 127F.....	10.00	
1 Set	Bits, auger 150H.....	6.10	
1	Bit, screwdriver 6 in.....	.41	
1	Bit, screwdriver 12 in.....	.81	
2 Pairs	Bags, packsaddle 4182V.....	19.00	
1	Cinch, web.....	1.00	
1	Chisel, cold.....	.80	
4	Clocks, alarm.....	7.50	
1	Cinch, saddle.....	1.00	
1	Forge, portable.....	5.00	
1	Grinder, carb. tool.....	2.00	
2	Halters, horse.....	3.50	
1	Howler, I.C.....	8.55	
3	Knives, paring.....	1.50	
6	Knives, butcher.....	3.45	
1	Knife, farrier's.....	1.00	
2	Kettles, small granite.....	2.00	
1	Lamp, gas, Coleman.....	7.50	
3	Lanterns, No. 2 oil.....	3.00	
3	Latigoes.....	1.74	
12	Mattocks.....	5.00	
1	Magneto.....	49.94	
1	Nippers, hoof.....	2.75	
1	Pin, Rolling.....	.65	
1	Pail, 10 qt.....	.40	
1	Pliers.....	1.50	
1	Pliers, Klein.....	3.75	
1	Punch, leather.....	1.25	
1	Strainer.....	.50	
1	Steel, butcher.....	.75	
6	Shovels.....	7.50	
8	Shovels, detachable handle.....	20.00	
1	Switch, S.P.S.T.....	.21	
2	Telephones, Adams Portable 1004A.....	36.00	
2	Trees, packsaddle, Decker.....	7.50	\$292.56

SCHOOL OF FORESTRY  
UNIVERSITY OF IDAHO  
MOSCOW, IDA.



---

COMMERCIAL PRINTING CO  
PRINTERS  
COEUR D'ALENE, IDAHO

---

