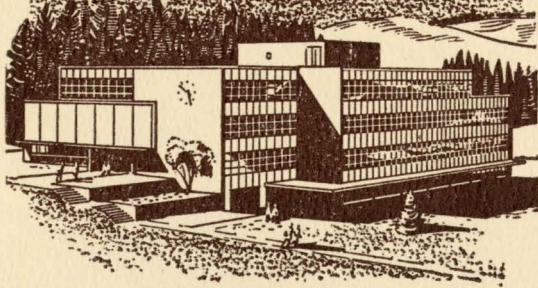


Biennial Report
Priest Lake Timber
Protective
Association



For the Years 1929-1930

UNIVERSITY
OF IDAHO
LIBRARY



NINTH ANNUAL REPORT
PRIEST LAKE TIMBER PROTECTIVE
ASSOCIATION
FOR THE YEAR 1929

OFFICIAL DIRECTORY

PRIEST LAKE TIMBER PROTECTIVE ASSOCIATION

1929

John R. Gray, PresidentSpokane, Washington
Ben E. Bush, Vice-PresidentMoscow, Idaho
W. W. Von Cannon, TreasurerSandpoint, Idaho
J. S. Barron, SecretarySpokane, Washington

DIRECTORS

John R. GraySpokane, Washington
Ben E. BushMoscow, Idaho
E. C. OlsonSpokane, Washington
H. J. McCoySandpoint, Idaho
J. J. BallardDalkena, Washington

AUDITING COMMITTEE

Ben E. Bush, ChairmanMoscow, Idaho
H. J. McCoySandpoint, Idaho
J. S. Barron.....Spokane, Washington

FIRE COMMITTEE

E. C. Olson, ChairmanSpokane, Washington
H. J. McCoySandpoint, Idaho
J. S. Barron.....Spokane, Washington

A. N. Cochrell, Newport, Washington,
Fire Warden

Boise, Idaho, April 7, 1930.

Honorable H. C. Baldrige,
Governor of Idaho,
Capitol Building

Dear Sir:

I have the honor of submitting herewith a copy of an audit report of the financial operations of the Priest Lake Timber Protective Association, principal place of business, Newport, Washington. The last audit of the records of this association by this department closed on November 30, 1928. This audit therefore covers the period from December 1, 1928, to November 30, 1929.

This association prior to activities of the 1929 season entered into a cooperative agreement with the U. S. Forest Service, Department of Agriculture, to protect the forest lands lying within its boundaries against forest fires. This cooperative agreement provides that the U. S. Forest Service will furnish adequate fire protection during the season 1929 for 5 1/2c per acre. The Forest Service to pay all expenses heretofore paid by the Association, except construction and maintenance of improvements and the actual fire suppression costs. Under the terms of this agreement, the U. S. Forest Service took over at an appraised value certain patrol and fire-fighting equipment amounting to \$3,470.00 and applied the same against this agreement.

In order to provide funds with which to meet the terms of this agreement the association levied two assessments totalling 8 cents per acre. This assessment raised \$17,956.38. The State's portion was \$14,474.24, all of which has been paid.

All expense vouchers and payrolls were examined and found to be correct. The cash on deposit in the Bonner County National Bank of Sandpoint, Idaho, reconciled with the cash on hand as shown by the Association's records. All checks drawn were for the correct amount and signed by proper authority.

In closing this report I wish to make acknowledgement of the valuable services rendered to this Association by the Interstate Utilities, a telephone company with principal office located in Spokane, Washington. This organization during 1929 and for prior years has been supplying weather reports when requested to this Association and all other similar Associations in North Idaho, without charge.

If the Secretary of this Association has not already done so, I would suggest that he write a letter to the Manager of this telephone company and express his appreciation for this splendid spirit of cooperation.

On behalf of this and the other Associations I wish to acknowledge the courtesy of Mr. A. B. Barrons of Spokane, Agency Manager of the Burroughs Adding Machine Company, who loaned me an electric drive adding machine from stock and would not accept any remuneration.

Respectfully submitted,

B. E. HYATT, Director,
Bureau of Public Accounts.

Schedule "A"

PRIEST LAKE TIMBER PROTECTIVE ASSOCIATION

Balance Sheet

At the Close of Business November 30, 1929

Assets

Cash in Bank	1,286.83
Premium-Workmen's Compensation Ins.	47.50
Total Current Assets	<u>1,334.33</u>

Property:

Headquarter's Building	1,136.02
Boats and Motors	232.58
Telephone System	<u>2,263.52</u>
Total Fixed Assets	3,632.12
Total All Assets	<u><u>\$4,966.45</u></u>

Liabilities

State Insurance Fund	71.97
Present Worth, Nov. 30, 1929	4,894.48
	<u><u>\$4,966.45</u></u>

Operation in Surplus**Or Variation in Present Worth****Credits:**

Present Worth, Nov. 30, 1928	7,532.58
State Ins. Fund-Reduction of Premium Rate, 1928	33.01
Indian Creek Cabin—Not Heretofore in Assets	48.62
Sale of Properties to U. S. F. S. in excess of Book Value	1,046.47
	<u><u>\$8,660.68</u></u>

Debits:

Excess of Expense over Revenue	3,766.20
Present Worth, Nov. 30, 1929	4,894.48
	<u><u>\$8,660.68</u></u>

Schedule "B"

ACREAGE AND ASSESSMENTS OF MEMBERS

Members	Acreage	Assm't	Assm't	Total
		No. 1-4c Amount	No. 2-4c Amount	Assm't For Season
Clearwater Tbr. Co.	1,351.32	54.05	54.05	108.10
Dalkena Lbr. Co.	2,400.30	96.01	96.01	192.02
Diamond Match Co.	25,144.71	1005.79	1005.79	2011.58
Humbird Lbr. Co.	2,196.00	87.84	87.84	175.68
Kaniksu Cedar Co.	726.75	29.07	29.07	58.14
Northern Pacific Ry.	3,316.05	132.64	132.64	265.28
State of Idaho*	182,191.50	7287.66	7186.58	14474.24
Non Members	671.34
	<u>217,326.63</u>	<u>\$8693.06</u>	<u>\$8591.98</u>	<u>\$17956.38</u>

*The acreage of the State of Idaho for the purpose of calculating assessment No. 2 was reduced to 179664.5 acres.

Day-NW
SD
421
87
1929/30

Schedule "C"

PRIEST LAKE TIMBER PROTECTIVE ASSOCIATION
OPERATION IN CASH

Receipts and Disbursements

December 1, 1928, to November 30, 1929

Receipts

Claims	80.00	
Clearwater Timber Co.	108.10	
Dalkena Lumber Co.	192.02	
Diamond Match Co.	2,011.58	
Humbird Lumber Co.	175.68	
Kaniksu Cedar Company	58.14	
N. P. Ry. Company	265.28	
State of Idaho	14,474.24	
Non-Members	671.34	
Federal Contributions—Clarke-McNary	4,403.00	
		<hr/>
Total Cash Receipts		22,439.38
Cash on hand December 1, 1928		1,593.51
		<hr/>
		\$24,032.89
		<hr/> <hr/>

Disbursements

Fire Suppression	7,855.47	
Lookout Dev. & Maint.	519.88	
Main Office Expense	258.27	
Maintenance of Livestock	136.13	
Maintenance & Operation Motor Vehicles	4.50	
Maintenance & Operation Motor Boats	1.65	
Maintenance Headquarters Buildings	16.18	
Maintenance Established Trails	1,160.84	
Maintenance Telephone System	241.12	
Miscellaneous Expense	127.60	
New Trail Building	3,327.71	
Telephone System	509.79	
Camp Equipment and Tools	69.21	
F. S. Protection Agreement—Patrolling	8,478.62	
Salary and Expense Chief Fire Warden	33.69	
Wanigan	5.40	
		<hr/>
Total Cash Disbursements		22,746.06
Cash on Hand Nov. 30, 1929		1,286.83
		<hr/>
		\$24,032.89
		<hr/> <hr/>

Schedule "D"

PRIEST LAKE TIMBER PROTECTIVE ASSOCIATION

Or Profit and Loss

At Close of Business November 30, 1929

Revenue

Assessments, 1929.—Schedule "B"	17,956.38
Federal Contributions—Clark-McN.	4,403.00
	<u>22,359.38</u>
Excess of Expense over Revenue	3,766.20
	<u><u>\$26,125.58</u></u>

Expense

Fire Suppression	7,855.47
Workmen's Comp. Insurance	152.98
L. O. Development & Maint.	519.88
Main Office Expense	235.33
Maintenance Livestock	136.13
Maintenance Headquarter Buildings	16.18
Maintenance Established Trails	160.84
Maintenance Telephone System	241.12
Maintenance Camp Equip. & Tools	31.21
Maintenance & Operation Motor Vehicles	4.50
Maintenance & Operation Motor Boats	1.65
Miscellaneous Expense	127.60
New Trail Building	3,327.71
Patrolling, etc.	8.84
Salary and Expense Chief F. W.	33.69
F. S. Protection Agreement	11,939.78
Wanigan—Loss	5.40
	<u>25,798.31</u>

Depreciation

Headquarters Building	98.75
Boats & Motors	58.15
Telephone System	170.37
	<u>327.27</u>
Total Season's Expense	<u><u>\$26,125.58</u></u>

Schedule "E"

**PRIEST LAKE TIMBER PROTECEIVE ASSOCIATION
OPERATION IN STATE ACCOUNT**

December 1, 1928, to November 30, 1929

Debits:

Assessment No. 1,	7,287.66	
Assessment No. 2,	7,186.58	
	<hr/>	
		\$14,474.24
		<hr/> <hr/>

Credits:

June 24, 1929, Warrant No. 19497—	7,287.66	
Aug. 10, 1929, Warrant No. 25123—	7,186.58	
	<hr/>	
		\$14,474.24
		<hr/> <hr/>

Schedule "F"

**Reconciliation of Associations Bank Account
with the
Depositary, Bonner County National Bank, Sandpoint
November 30, 1929**

	<u>\$4,429.06</u>
Balance per Association's Records	1286.83
Outstanding Checks:	
No. 282	2.10
No. 375	29.25
No. 376	.80
No. 380	13.00
No. 381	1.00
No. 382	11.10
No. 388	51.34
No. 389	2970.47
No. 390	8.40
No. 391	54.77
	3,142.23
	\$4,429.06

Schedule "G"

STATEMENT FROM THE ASSOCIATION'S
 RECORDS OF ITS ACCOUNT WITH THE U. S. FOREST SERVICE
 FOR 1929 FIRE SEASON

	Debit	Credit
Per Cooperative Agreement:		
217087 Acres at 5½c per acre		11,939.78
May 28, 1929, By Check No. 273	2,000.00	
June 1, 1929, By Personal Property	3,470.00	
July 5, 1929, By Check No. 299	6,469.78	
	<u>\$11,939.78</u>	<u>\$11,939.78</u>

Schedule "H"

**SCHEDULE SHOWING OPERATION IN ASSOCIATION'S PROPERTY ACCOUNTS
DURING THE SEASON ENDING NOVEMBER 30, 1929**

	Value Dec. 1 1928	Purchases	Deprecia- tion	Transfer- red to U. S. F. S.	Excess of Sale over Book Value	Value Nov. 3 1929
Buildings	1,186.15	48.62	98.75			1,136.02
Boats and Motors	540.73		58.15	250.00		232.58
Construction of Telephone System	2,143.72	509.79	170.37	219.62		2,263.52
Motor Vehicles	212.01			216.53	4.52	
Camp Equipment and Tools	1,242.97	38.00		2,253.62	972.65	
Livestock and Equipment	460.93			530.23	69.30	
	<u>\$5,786.51</u>	<u>\$596.41</u>	<u>\$327.27</u>	<u>\$3,470.00</u>	<u>\$1,046.47</u>	<u>\$3,632.12</u>

Note:

Under the terms of an agreement between this association and the U. S. Forest Service the association turned over to the U. S. F. S. certain property at an agreed appraisal value of \$3,470.00, and this amount was applied as part payment on the contract for the season 1929; See Schedule "G" of this report.

The item of \$1,046.47 in the above schedule represents the excess of the appraised value of the property turned over to the Forest Service over the value of the same property as carried on the books of the Association; See Schedule "A" of this report.

AUDITOR'S CERTIFICATE

I hereby certify that I have audited the accounts of the Priest Lake Timber Protective Association for the season 1929, beginning December 1, 1928, and ending November 30, 1929. All funds of this association were deposited in the Bonner County National Bank, Sandpoint, Idaho, and disbursed by voucher checks and time checks signed by proper authority.

The expense vouchers and pay rolls were examined by the Auditing Committee, which committee reported that all expenditures appeared to be necessary and essential to the prevention and suppression of forest fires. The rates of pay for labor and supplies were in accordance with prevailing schedules and prices. All cash received as shown by the records I found properly accounted for.

B. E. HYATT, Director,

BUREAU OF PUBLIC ACCOUNTS.

Boise, Idaho

April 7, 1930.

FIRE WARDEN'S REPORT

1929

The fire season just past has been severe from all angles and up to the present time no general rains have occurred to eliminate the danger of further trouble. After June 18, very little rain had fallen and the season is recorded as one of the driest ever experienced. In spite of the adverse weather conditions no great difficulties were experienced in controlling the 19 fires which occurred within the boundaries of the Association area. However, it required more men for a longer period time to handle the so-called small fires and the suppression costs are correspondingly higher than for the average year.

The first fire of the season occurred on July 7 and was a hold-over from spring slash disposal, while the last fire was on October 3 and was caused from brush burning by an unknown settler. With the exception of these two fires and one other, a smoker's, all fires were started by lightning. Further statistics on area, damage, costs, etc., can be found on a separate page as a part of this report.

The officials of the Pend Oreille Association are to be commended on their efforts to suppress the fire in the vicinity of Blue Mountain and prevent its spread across the ridge and into the headwaters of East River.

Brush Disposal

Weather conditions were decidedly unfavorable for burning this fall and slash disposal operations where carried on were, in general, unsuccessful. This was due largely to adverse conditions rather than to failure on the part of the operators, except that they tried burning in the face of conditions that would have made satisfactory disposal practically an impossibility.

The operator on the State sale of December 20, 1924, on Caribou Creek tried burning on the few remaining areas requiring attention and after disposing of the slash, took the men away before the fires were out. This resulted in the fires' creeping in the duff and doing more or less damage to the remaining stand. This could have been prevented had the fires been properly patrolled.

On two privately-owned slash areas in the vicinity of Coolin the operator did considerable piling in a creditable manner but in burning during the dry period obtained results comparable to a broadcast burn on a portion of the areas. The final results are unsatisfactory and "certificates of clearance" have been refused until further work is done.

Logging operations were being carried on during the summer and fall on States sales of May 3, 1929, in Sections 15 and 22, T. 59, R. 4 W., and of December 20, 1924, in Sections 25 and 26, T. 63, R. 4 W., and on some private land adjoining the latter sale. The slash on these areas remains to be disposed of.

Improvement Maintenance

The work of putting all trails and telephone lines in serviceable condition was accomplished before the opening of the fire season. Some work of this nature was carried on throughout the season and many of the old trails were improved to the point of making them passable and safe for pack stock.

Improvement Construction

The cabin at Indian Creek was completed. An observatory at Lookout Mountain was constructed and is complete except for a few minor details which can be accomplished on time contributed by the guards next season.

The foundation for a like structure at Hunt Creek was put in and is ready for the building next season. These observatories will aid materially in the detection of fires, since they provide protection for the lookouts who can be constantly on the watch for fires, which is not the case when tents are used for housing quarters.

The additional 4.5 miles of telephone line to Phoebe Tip Lookout was constructed. Eight miles of telephone line was also built up Two-Mouth Creek as a means of communication for the protection man in that locality.

The trail up Trapper Creek to Phoebe Tip was practically completed with the construction of 7 miles this season. The remaining portion is about one-fourth mile long, but is in bad rock near the top. Some time of the regular protection man can be utilized in the completion of this project.

Five miles of trail were completed up Horton Creek from the East Shore Trail. This drainage contains a considerable area of good timber and this trail should aid materially in its protection. The project should be further extended to connect up with the South Fork of Indian Creek Trail and a branch should also connect with the Hunt Creek Trail.

The connection between the North and South Fork of Hunt Creek Trails was made with the construction of one mile of trail.

The Middle Fork of East River Trail was found to be heavy construction on account of the rocky formation, but in spite of these obstacles, 5 miles of good trail was built this season. Three miles more will complete this trail to the top of Blue Mountain.

In addition to the construction of the above mentioned improvements which are a distinct aid in the satisfactory protection of the area, the crews proved to be a valuable secondary line of defence when fires occurred. They were used on fire suppression work a number of times during the season.

Proposed Improvement Projects

The following projects are recommended for construction during the 1930 season:

Completion Middle Fork East River Trail	3 miles
Completion Horton Creek Trail	6 miles
Upper Lost Creek Trail	3 miles
Blue Mountain—Bald Mountain Trail (partial)	4 miles
Goblin Knob Trail	6 miles
Lost Creek Telephone Line	7 miles
Hunt Peak Observatory	

Each of the above trails forms an important part in the ultimate plan for opening up the more inaccessible areas in order that protection men can reach small fires with the least possible delay. Also when fires reach crew size, it will not be necessary to spend valuable time cutting trails to pack in the necessary equipment.

A new protection point was established on the divide between Lost Creek and Soldier Creek the past season and a telephone line up Lost Creek is very necessary to furnish direct communication with the ranger's headquarters at Coolin.

Protection Organization

A rather radical change was made at the beginning of the season in the method of handling the protection part of the organization for the entire Association area. A co-operative agreement was entered into with the Forest Service whereby for a specified rate per acre they would furnish the necessary protection, give proper supervision and furnish needed equipment. The improvement and fire suppression work together with a few miscellaneous items are financed direct by the Association.

This arrangement has worked out quite satisfactorily from an administrative standpoint and should be continued if agreeable to both parties.

Equipment

All of the Association equipment except one boat and motor was taken over by the Forest Service under the terms of the agreement, and the Camp Equipment and Tools account closed out except for the above-mentioned items. This has eliminated much of the confusion which resulted under the former procedure of keeping separate property accounts for the Association and Forest Service on ranger districts which are made up of both classes of land.

STATISTICS OF 1929 FIRES

Name	Class	Date	Location			Mer	Area Burned			Damage			Cost	Cause
			S	T	R		Repro	Other	Total	Repro	Other	Total		
Cedar Creek	B	7-15	19	64	4			.4	.4				45.	Lightning
Priest River No. 2	A	7-7	5	58	4			spot	spot				10.	Lumbering
Rocky Cliff	B	8-4	8	57	4		3.2		3.2	18.		18.	778.	Lightning
Trapper Creek	B	8-7	16	63	4			.4	.4				18.	Lightning
Caribou Creek	B	8-7	15	63	4		.3		.3	4.		4.	60.	Lightning
Two Mouth	A	8-9	24	62	3			spot	spot				2.	Lightning
Bugle Creek	C	8-11	35	64	4			340.	340.		340.	340.	3079.	Lightning
Upper Two Mouth	C	8-9	36	62	3			20.	20.		20.	20.	754.	Lightning
Happy Gap	C	8-14	4	57	3		10.		10.	130.		130.	1130.	Lightning
Lion Creek	B	8-19	4	62	3			5.	5.		5.	5.	199.	Lightning
Camp 2	A	8-31	11	57	4		.2		.2				33.	Lightning
Bear	A	8-31	1	61	4		.2		.2				219.	Lightning
Berg	A	8-31	36	62	4	spot			spot				181.	Lightning
The Lakes	B	8-31	34	62	3			7.	7.		7.	7.	808.	Lightning
Yak	A	8-31	32	62	3			spot	spot				7.	Lightning
Rainy Day	A	8-31	33	62	3			spot	spot				23.	Lightning
Six Man	A	8-31	33	62	3			spot	spot				32.	Lightning
Coolin	A	8-23	10	59	4			.1	.1				20.	Smokers
Quartz Creek	C	10-3	8	57	4			320.0	320.		320.	320.	436.	Debris burn
Totals							.2	13.7	692.9	706.8	152.	692.	844.	\$7834.

TENTH ANNUAL REPORT
PRIEST LAKE TIMBER PROTECTIVE
ASSOCIATION
FOR THE YEAR 1930

OFFICIAL DIRECTORY

PRIEST LAKE TIMBER PROTECTIVE ASSOCIATION

1930

John R. Gray, PresidentSpokane, Washington
Ben E. Bush, Vice-PresidentMoscow, Idaho
W. W. Von Cannon, TreasurerSandpoint, Idaho
J. S. Barron, SecretarySpokane, Washington

DIRECTORS

John R. GraySpokane, Washington
Ben E. BushMoscow, Idaho
E. C. OlsonSpokane, Washington
H. J. McCoySandpoint, Idaho
J. J. BallordDalkena, Washington

AUDITING COMMITTEE

Ben E. Bush, ChairmanMoscow, Idaho
H. J. McCoySandpoint, Idaho
J. S. BarronSpokane, Washington

FIRE COMMITTEE

E. C. Olson, ChairmanSpokane, Washington
H. J. McCoySandpoint, Idaho
J. S. BarronSpokane, Washington

A. N. Cochrell, Newport, Washington,
Fire Warden

Boise, Idaho, December 9, 1930

Honorable H. C. Baldridge
Governor of Idaho
Capitol Building
Dear Sir:

We have the honor to submit herewith a report of our recent audit of the financial operations of the Priest Lake Timber Protective Association, principal place of business, Newport, Washington. The last previous audit of the accounts of this Association closed on November 30, 1929, and this report covers the period beginning with December 1, 1929, and closing on November 30, 1930, which constitutes the fiscal year.

This period covers the second season during which the Association has operated under a co-operative agreement with the U. S. Forest Service, Department of Agriculture, to protect the forest lands lying within its boundaries against forest fires. Details of this arrangement are contained in our report of April 7, 1930, and remain substantially the same.

In order to provide funds with which to meet the terms of this agreement, together with outlays for improvements and maintenance and other expenses incidental to operation, the Association levied two assessments totalling $8\frac{1}{4}$ cents per acre. The amount thus raised was \$17,745.75, of which the State's portion was \$14,919.44. The entire amount of these assessments has been paid.

All funds of the Association were deposited in the Bonner County National Bank, Sandpoint, Idaho, and disbursed by voucher checks and time checks for the correct amounts and signed by proper authority; and all cash received as shown by the records we found to be properly accounted for. The cash on deposit in the Bonner County National Bank reconciled with the cash on hand as shown by the Association's records.

The extensions and additions on expense vouchers and pay-rolls were verified after which the same were examined by the Audit Committee consisting of Mr. Ben E. Bush and Mr. J. S. Barron, the third member of the Committee was not present.

Respectfully submitted,

BUREAU OF PUBLIC ACCOUNTS

s/B. E. Hyatt, Director

s/John W. Shore, Examiner

Schedule A

PRIEST LAKE TIMBER PROTECTIVE ASSOCIATION

Balance Sheet

At the Close of Business November 30, 1930

Assets:

Cash in Bank		\$ 494.69
--------------	--	-----------

Property

Headquarters Buildings	\$ 1,045.14	
Boats and Motors	197.69	
Telephone System	3,491.92	
	\$ 4,734.75	4,734.75
Schedule "H"		<u>\$5,229.44</u>

Liabilities

State Insurance Fund		3.51
U. S. Forest Service Fire Suppression		1,112.95
Present Worth, November 30, 1930		4,112.98
		<u>\$5,229.44</u>

Operation in Surplus

Or Variation in Present Worth

Credits:

Present Worth, November 30, 1929	4,894.48
Reduction in Indemnity Bond Rate	2.50
	<u>\$4,896.98</u>

Debits:

Excess of Expense over Revenue	784.00
Present Worth, November 30, 1930	4,112.98
	<u>\$4,896.98</u>

Schedule B

ACREAGE AND ASSESSMENTS OF MEMBERS

1930

Members	Acreage	Assm't		Total Assm't. For Season
		No. 1-4c Amount	No. 2-4¼c Amount	
Clearwater Timber Co.	1,351.32	54.05	57.43	111.48
Dalkena Lumber Co.	1,520.	60.80	64.60	125.40
Diamond Match Co.	25,144.71	1,005.79	1,068.65	2,074.44
Humbird Lumber Co.	2,196.00	87.84	93.33	181.17
Kaniksu Cedar Co.	686.75	27.47	29.19	56.66
Northern Pacific Ry.	3,359.05	134.38	142.78	277.16
State of Idaho	180,928.00	7,237.12	7,682.32	14,919.44
	215,185.83	\$8,607.45	\$9,138.30	\$17,745.75

Schedule C

PRIEST LAKE TIMBER PROTECTIVE ASSOCIATION
OPERATION IN CASH

Receipts and Disbursements

December 1, 1929 to November 30, 1930

Receipts:

Clearwater Timber Co.	\$ 111.48
Dalkena Lumber Co.	125.40
Diamond Match Co.	2,074.44
Humbird Lumber Co.	181.17
Kaniksu Cedar Co.	56.66
Northern Pacific Ry.	277.16
State of Idaho	14,919.44
Federal Contributions — Clark-McNary	3,540.00
Repayment—L. D. Farnin & Sons	37.50
	<hr/>
Total Cash Receipts	21,323.25
Cash on Hand, December 1, 1929	1,286.83
	<hr/>
	<u>\$22,610.08</u>

Disbursements:

Fire Suppression	4,439.44
Lookout Dev. and Maint.	390.51
Main Office Expense	23.60
Maint. and Operation Motor Boats	1.20
Maint. Headquarters Bldgs.	2.50
Maint. Established Trails	714.10
Maint. Telephone System	132.54
Miscellaneous Expense	25.82
New Trail Building	2,736.95
Telephone System	1,491.23
F. S. Protection Agreement	11,940.00
Wanigan	5.55
State Insurance Fund	176.95
Prepaid Indemnity Bond Premium	35.00
	<hr/>
Total Cash Disbursements	22,115.39
Cash on Hand, November 30, 1930	494.69
	<hr/>
	<u>\$22,610.08</u>

Schedule D

PRIEST LAKE TIMBER PROTECTIVE ASSOCIATION

Or Profit And Loss

At Close of Business November 30, 1930

Revenue:

Assessments 1930,—Schedule "B"	\$17,745.75
Federal Contributions—Clark McNary	3,540.00
	<hr/>
	21,285.75
Excess of Expense over Revenue	784.00
	<hr/>
	<u>\$22,069.75</u>

Expense:

Fire Suppression	4,439.44
Workman's Compensation Insurance	180.46
Lookout Development and Maintenance	390.51
Maintenance and Operation Motor Boats	1.20
Maintenance Headquarters Buildings	2.50
Maintenance Established Trails	714.10
Maintenance Telephone System	132.54
Miscellaneous Expense	25.82
New Trail Building	2,736.95
Forest Service Protection Agreement	11,940.00
Wanigan—Loss	5.55
Main Office Expense	71.10
	<hr/>
Total Expenditures for Operation	20,640.17
Less 1929 State Insurance Fund	71.97
	<hr/>
	20,568.20

Additional Expense:

Depreciation, Schedule "G"	388.60	
Due U.S.F.S.—Fire Suppression	1,112.95	1,501.55
	<hr/>	
Total Season's Expense		<u>\$22,069.75</u>

Schedule E

PRIEST LAKE TIMBER PROTECTIVE ASSOCIATION
 OPERATION IN STATE ACCOUNT

December 1, 1929 to November 30, 1930

Debits:

Assessment No. 1	7,237.12	
Assessment No. 2	7,682.32	
		<u>\$14,919.44</u>

Credits:

April 29, 1930—Warrant No. 64867	7,237.12	
August 1, 1930—Warrant No. 77831	7,682.32	
		<u>\$14,919.44</u>

Schedule F

**Reconcilement of Association's Bank Account
with the
Depositary, Bonner County National Bank, Sandpoint, Idaho,
1 9 3 0**

Balance as per Bank Statement	\$605.21
Balance as per Association's Records	<u>\$494.69</u>
Outstanding checks:	
P-282 (Oct. 1929)	\$ 2.10
P-188	35.00
P-194	5.75
Vr. No. 501	<u>67.67</u>
	110.52
	<u><u>\$605.21</u></u>

Schedule G

**Statement From the Association's Records
Of Its Account With the U. S. Forest Service
For 1930 Fire Season**

	Debit	Credit
Per Cooperative Agreement:		
217091 Acres at 5½ c per acre		\$11,940.00
May 28, 1930 By Check No. 411	\$2,000.00	
July 21, 1930 By Check No. 438	7,940.00	
Aug. 13, 1930 By Check No. 460	2,000.00	
	<u>\$11,940.00</u>	<u>\$11,940.00</u>

**Acreage Included by Terms of
Co-operative Agreement With U. S. Forest Service**

Acreage of Members	215,185.83
Acreage of Non-Members	1,905.17
	<u>217,091.00</u>

Schedule H

**SCHEDULE SHOWING OPERATION IN ASSOCIATION'S
PROPERTY ACCOUNTS DURING THE SEASON ENDING
NOVEMBER 30, 1930**

	Value Dec. 1, 1929	Purchases	Depreciation	Transferred to USFS	Excess of Sale over Book Value	Value Novem- ber 30, 1930.
Buildings	1,136.02		90.88			1,045.14
Boats and Motors	232.58		34.89			197.69
Telephone System	2,263.52	1,491.23	262.83			3,491.92
Totals	\$3,632.12	\$1,491.23	\$388.60			\$4,734.75

AUDITORS' CERTIFICATE

We hereby certify that we have audited the financial records of the Priest Lake Timber Protective Association for the season of 1930, beginning December 1, 1929, and ending November 30, 1930.

All funds of this Association were deposited in the Bonner County National Bank, Sandpoint, Idaho, and disbursed by voucher checks and time checks signed by proper authority.

The extensions and additions on all expense vouchers and pay-rolls were verified and found to be correct, after which the same were examined by the Auditing Committee, which Committee reported that all expenditures appeared to be necessary and essential to the prevention and suppression of forest fires and that the rates of pay for labor and supplies were in accordance with the prevailing schedules and prices. All cash received as shown by the records we found to be properly accounted for.

BUREAU OF PUBLIC ACCOUNTS,

By B. E. Hyatt, Director,

John W. Shore, Examiner.

Boise, Idaho

December 9, 1930.

FIRE WARDEN'S REPORT**1 9 3 0**

The past fire season while not severe from the standpoint of damage or number of fires, caused much concern among the administrative forces. The fall, winter, and spring precipitation was far below normal and early season conditions were critical. Lightning storms were numerous and severe but in practically every instance were accompanied by rain-fall which together with the prompt action of placing men on fires, prevented any situation from developing that could not be handled quite readily.

As shown elsewhere in this report, the first fire occurred on July 14 in piled brush on a state sale on Caribou Creek and was considered a smoker's fire. Two other fires were caused by smokers later in the season and these together with three incendiary fires in the vicinity of Pine Creek, make a total of six man-caused fires for the season. A lightning storm on August 15 started eight fires in various parts of the area and one of these, being in a place not visible from any Lookout, was not found until August 22, when it developed rapidly into the largest and most expensive fire of the season. It was known as the Upper Lion Creek Fire and covered an area of 174 acres of sub-alpine type. The extremely rough topography made the suppression of this fire very slow and difficult.

Brush Disposal

But few logging operations were carried on during the past year and while practically all slash is piled, weather conditions would not permit burning this fall. Sufficient rainfall to allow safe burning did not occur until late October after which time slash could not be burned at a reasonable cost. A special effort will be made to have all operators dispose of accumulated slash before the beginning of next season.

On the State Sale on Big Creek, the slash is taken care of under agreement with the Forest Service and the disposal is well up with current operations.

Improvement-Maintenance

All trails were cleaned out and the telephone lines repaired and put in serviceable condition before the beginning of the fire season.

Improvement-Construction

All construction work provided for in the budget was accomplished with only minor changes being made between projects.

An observatory was constructed on Hunt Peak and is complete in every detail. This structure is a 14 x 14 standard frame lookout house and will aid materially in the detection of fires and in addition provides comfortable living quarters for the men stationed at that point.

The Lookout Mt. observatory partially completed last season was finished, largely on time contributed by the protection men.

A total of 25 $\frac{3}{4}$ miles of telephone line were constructed and divided by projects as follows:

Middle Fork East River	10 miles
Lost Creek	6 $\frac{3}{4}$ miles
Goblin Knob	4 $\frac{1}{2}$ miles
Caribou Creek	4 miles
Two-Mouth	$\frac{1}{2}$ miles

Eighteen and eight-tenths miles of trails were constructed in the following location:

Middle Fork East River	3.1 mile
Lost Creek	2.1 mile
Horton Creek-Indian Creek	2.1 mile completed
Horton Creek-Hunt Creek	2.9 mile
Goblin Knob	4.5 mile completed
Bear Creek	.8 mile
Huckleberry Bay	3.0 mile completed
Phoebe Tip	.3 mile completed

Proposed Improvement Projects

There is still an urgent need for a great many miles of trail to open up the more inaccessible parts of the area in addition to an occasional building and telephone line for the proper handling of the protection force and the following specific projects are recommended for the 1931 season:

Blue Mt.-North Fk.East River Trail	7 miles
Lost Creek-North Fk. East River Trail	3 miles
Cougar Creek Trail	5 miles
Horton Creek-Hunt Creek Trail	3 miles
Bear Creek Trail	2 miles
Squaw Mt. Trail	6 miles
Lookout Mt.-Lion Creek Trail	4 miles
Cougar Creek Telephone Line	5 miles
Squaw Mt. Telephone Line	4 miles

If suitable improvements are provided, it is planned to move the protection man from Upper Two-Mouth to Squaw Mt. and one man from Hunt Peak to the point at the head of Cougar Creek. It is believed that this will give better protection for the areas concerned than does the present arrangement.

Protection Organization

The agreement between the Association and the Forest Service for the handling of the protection work on a flat rate per acre basis was continued during the past season and was entirely satisfactory. Three additional protection men were placed in the field with no increase in the rate per acre in an effort to fill in some large gaps where disastrous fires were likely to occur. However, it is not felt that a more intensive organization is as much needed as more improvements if we hope to adequately protect the area.

STATISTICS OF 1930 FIRES

Name	Class	Date	Location			Area Burned				Damage					
			S	T	R	Mer Tbr.	Repro duc.	Other	Total	Mer. Tbr.	Repro duc.	Other	Total Value	Cost	Cause
Caribou Cr.	B	7-14	26	63	4	2	5		7.	160	30		190	793	Smoker
Pine Cr.	B	7-30	28	57	4		3		3.		9		9	141	Incend.
Pine Cr. No. 2	A	8-1	28	57	4				spot					61	Incend.
Lion Cr.	A	8-16	8	62	3				spot					32	Light
Lookout Mt.	A	8-16	6	62	3				spot					31	Light
Bear Cr.	A	8-16	12	61	4				spot					35	Light.
Huot	A	8-17	9	58	4				spot						Light.
Big Creek	A	8-16	36	58	4		.2		.2					67	Light
Prairie	A	8-16	17	60	3				spot					22	Light.
N. Fk. Hunt Cr.	A	8-19	5	60	3			.2	.2					25	Light
Upper Lion Cr.	C	8-22	36	63	3			174.	174.			174	174	4213	Light.
Priest River	A	8-29	20	59	4			.1	.1					24	Smoker
Chase Lake	A	9-9	22	59	4			.1	.1					18	Light.
Blue Lake	A	9-9	13	57	4			.1	.1					29	Light.
Dalley	A	9-18	28	57	4				spot					26	Incend.
Krauter	A	9-7	16	57	4				spot					1	Smoker
Total 16 Fires						2	8.2	174.5	184.7	160	39	174	373	5518	

The total cost here includes time spent on fires by regular patrolmen which will not show up on the records.

