



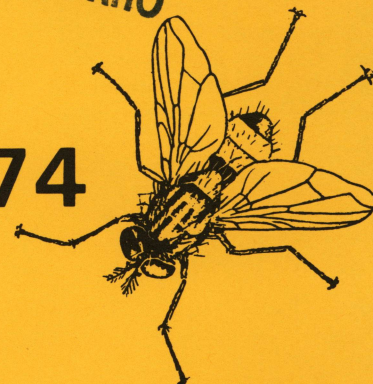
University of Idaho  
 College of Agriculture  
 Cooperative Extension Service  
 Agricultural Experiment Station

Current Information Series No. 225

April 1974

**LIBRARY**  
 OCT 3 1974  
 UNIVERSITY OF IDAHO

# Fly and Lice Control For Idaho Dairies — 1974



*Musca domestica*, house fly, 1/4 inch.

Prepared by Hugh W. Homan, Extension Entomologist,  
 and Edward A. Fiez, Area Dairy Specialist,  
 University of Idaho Cooperative Extension Service

## Fly Control on Dairy Cows

Continue application as needed all summer

Insecticide and Dosage	Application	Limitations
1. Methoxychlor 50% WP applied as powder to back and neck. OR	1 tablespoon per animal	One application every 3 weeks if necessary.
2. Malathion 4% to 5% dust to back and neck of animals. OR	4 tablespoons of 4% dust. 3 tablespoons of 5% dust.	Repeat at 10-14 day intervals. Apply 5 hours before milking.
3. Pyrethrins .05% + synergist .5%. OR	1 to 2 quarts.	As wet spray 3 to 7 days as necessary.
4. Ciodrin, .3% solution in water. OR	Thorough application to animal.	Do not apply Ciodrin more than once a week. Do not contaminate food or feed.
5. Ciodrin, 3% dust applied over back or by dust bag. OR	1 to 2 tablespoons	Repeat at 2 to 3 weeks as needed. Daily application may be applied with dust bags.
6. Coumaphos (Co-Ral) 1% or 5% dust applied over back. OR	Daily by self applying dust bags.	5% Co-Ral can be applied only in a dust bag.
7. Dichlorvos (Vapona) 1% oil solution. OR	1 to 2 ounces per animal.	Per day. Do not wet animals.
8. Ciodrin 1% plus dichlorvos (Vapona) 1/4% in oil. OR	Daily, 1 to 2 ounces per animal.	Limit use to 2 ounces/day.
9. Rabon 3% dust applied over the back or by dust bag.	1 to 2 ounces per animal by hand or power duster. Daily by self-applicating dust bags.	Repeat as needed.

### PRECAUTIONS

Most effective insecticides are poisons. Read the label on the package and follow its precautions carefully. Avoid contact with skin, eyes, clothing. To protect pastured animals and food crops in neighboring fields, avoid excessive

drift. To protect fish and wildlife, be certain that ponds and streams do not become contaminated. Keep away from children and domestic animals and dispose of used containers safely.

S  
 53  
 E322



## House fly control *in dairy buildings and around the dairy premises*

For fly control on dairy cows see other side

Insecticide and Dosage	Application	Limitations
Baits: Commercially prepared dry and liquid baits will contain dichlorvos (Vapona), malathion, ronnel (Korlan), trichlorfon (Dipterex) or naled (Dibrom).	Follow manufacturer's directions in applying dry and liquid baits.	May be used in milk room. Do not contaminate feed, water or dairy utensils. Keep poultry and livestock out of treated areas. Do not contaminate milk or milk handling equipment.
Residual sprays: This can be prepared from Ciodrin, dichlorvos (Vapona), dimethoate (Cygon) malathion, ronnel (Korlan), Rabon or naled (Dibrom).	Follow container label directions and thoroughly wet areas where flies congregate.	Do not use Baytex, Ciodrin, dimethoate or Rabon in milk rooms. Do not contaminate feed, water or dairy utensils. Do not contaminate milk or milk handling equipment. Do not apply directly to animals.
Space sprays: Pyrethrins .1% to .2% + synergist 1% to 2%, or dichlorvos (Vapona).	Follow container label directions and thoroughly wet areas where flies congregate.	May be used in milk rooms. Do not contaminate milk, milk handling equipment, feed or drinking water.
Strip: Resin strip, 20% dichlorvos (Vapona).	Attach strip horizontally to ceiling at the rate of 1 strip/1000 cu. ft. of enclosed space.	May be used in milk room. Do not place strips over feed troughs, water troughs or milking utensils. Do not contaminate feed or milk.

## Control of Lice on Lactating Dairy Cows

Fall and winter treatments

Insecticide and Dosage	Application	Limitations
1. Co-Ral 1/4 pound EC of WP per 100 gallons of water. OR	Thoroughly wet the animal.	
2. Co-Ral 1% or 5% dust OR	Dust bags or Hand dusting.	Repeat as needed.
3. Ciodrin 0.3% spray or 3% dust OR	Follow container label recommendations.	Thoroughly wet the animal as needed with spray method.
4. Pyrethrins 0.05% + synergist .5% OR	Follow container label recommendations.	Thoroughly wet the animal with spray method.
5. Rabon 3% dust applied over the back or by dust bag.	1 to 2 ounces per animal by hand or power duster. Daily by self-applicating dust bags.	Repeat as needed.

- *Do not feed salt mixtures of ronnel or other systemic to milking cows.*
- *Follow manufacturers recommendations when using any insecticide*
- *Many chemicals can be used on young stock and non-lactating dairy animals. Observe cut-off dates before milking treated animals.*

**WARNING:** The recommendations in this publication are based on the best information currently available for each chemical listed. If followed carefully, residues should not exceed the tolerance established for any particular chemical. To avoid excessive residues, follow recom-

mendations carefully with respect to dosage levels, number of applications and minimum interval between applications. The dairyman is responsible for residues in his products. Use only 1974 packaged materials.

*Published and Distributed in Furtherance of the Acts of May 8 and June 30, 1914,  
by the University of Idaho Cooperative Extension Service, James L. Graves,  
Director; and the U.S. Department of Agriculture, Cooperating.*