



LIBRARY

JUN 17 1983



The Tailored Shoulder

Ernestine Porter
Extension Textiles and Clothing Specialist

Shoulder Pad Selection

A tailored suit or coat requires the use of shoulder pads. Shoulder pads:

- Provide a foundation on which the garment will hang.
- Are usually found in quality garments regardless of the fashionable silhouette.

Square shoulders
Narrow shoulders
Well-padded shoulders

The type of shoulder pad used may vary according to:

Current fashion
Personal taste
Figure type (may camouflage problems)

Using shoulder pads will help to avoid the home sewn look. Correct shaping means shoulder padding.

The best styled pads have a diagonal line in back and a squared line in front. Shoulder pads give a clean cut shoulder line and smooth out the shoulder blade area. The square front gives a greater area of coverage resulting in a more tailored effect. A square front better fills the hollow between the shoulder and bust.

Shoulder pad selection is an important part of today's fashions.

- Suits and coats
- Dresses and sweaters

Shoulder pads are available for all sleeve styles.

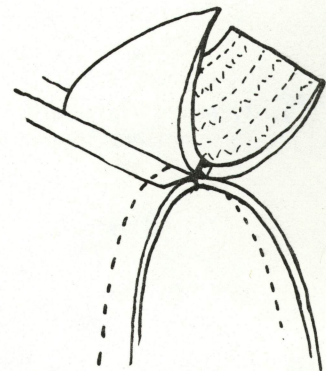
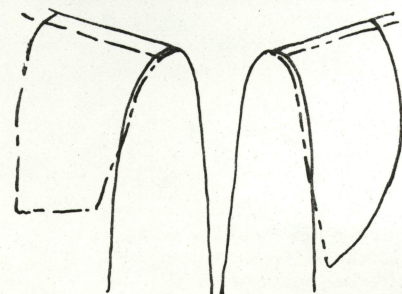
- Raglan
- Kimono
- Drop shoulder
- Set-in

The proper size, shape and construction are important to insure correct fit and feel of the garment. The pattern may recommend the correct type. The thickness may vary from $\frac{1}{8}$ to 1 inch. The padding used should be compatible to the fabric for a soft silhouette to give a truly professional look.

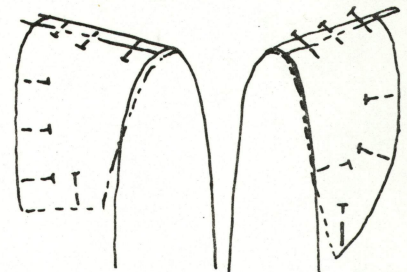
Shoulder pads can be cut down or built up. Make pad corrections to achieve the desired shoulder and sleeve line.

- Garment style
- Figure
- Personal preference

Use a pad positioned inside the garment for all fittings.



- The pad usually extends $\frac{1}{4}$ to $\frac{3}{8}$ inch beyond the armhole seam.
- Pin the pad in place from the right side of the jacket.
- Usually the pad will cross the seam line in front and back. This depends on posture.



Attaching The Shoulder Pad

Insert the shoulder pad in the completed unlined jacket.

- Position with shoulder seams matching.
- The mound of the pad is against the wrong side of the garment.

Remove the jacket and slip the neck edge of the pad under the garment facing.

Attach the pad at the armhole seam allowance using a running stitch with an occasional backstitch.

Attach the pad to the interfacing with a tailor basting, or secure the free edge of the pad to the shoulder seam allowance.

Sleeve Heads

Sleeve heads are used to support the sleeve cap. They:

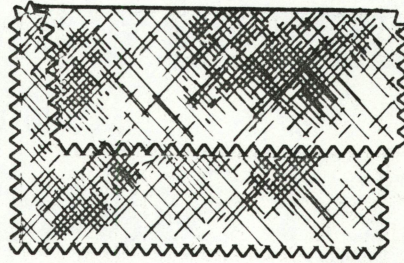
- Prevent seam allowances from showing through to the right side.
- Give the sleeve cap a soft roll.
- Can be used alone or with shoulder pads.

Sleeve heads can be purchased and are usually quite thick. They are recommended for tailored coats and jackets but not for lighter weight garments.

Use a bias strip of soft material for making a sleeve heading.

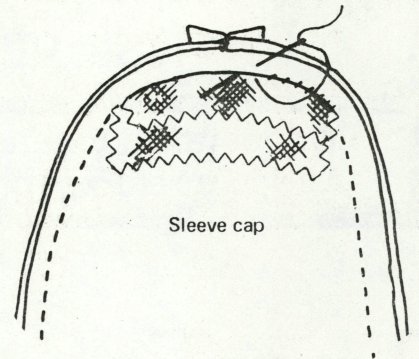
- Cut this strip on the bias. It should be long enough to go around the top half of the sleeve, about 3 inches wide by 6 or 7 inches long.

- Lambs wool is recommended for dry-cleanable fabrics.
- Polyester fleece or similar material is recommended for washable fabrics.
- Fold 1 inch under on one long edge.



- Center the head to the wrong side of the sleeve cap, keeping the wider half against the sleeve.

- Slip stitch the folded edge along the seamline.



With garment right side out, mold the sleeve cap over padding to obtain a smooth look. Steam cap with an iron to help it mold easily. Do not touch the garment with the iron.

Reference to trade names is made with the understanding that neither discrimination is intended nor endorsement implied by the University of Idaho Cooperative Extension Service.